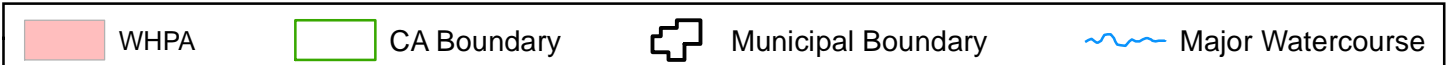
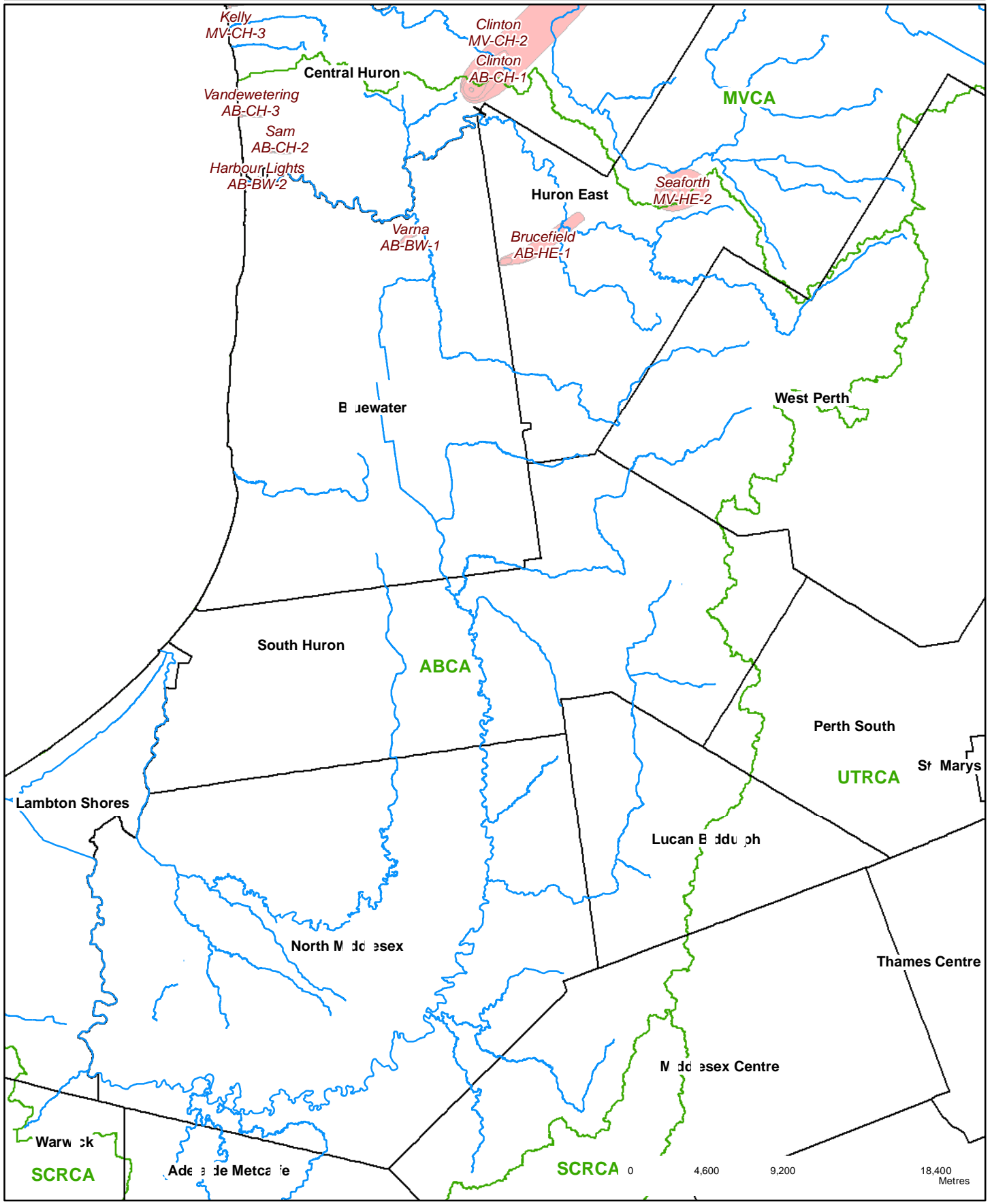
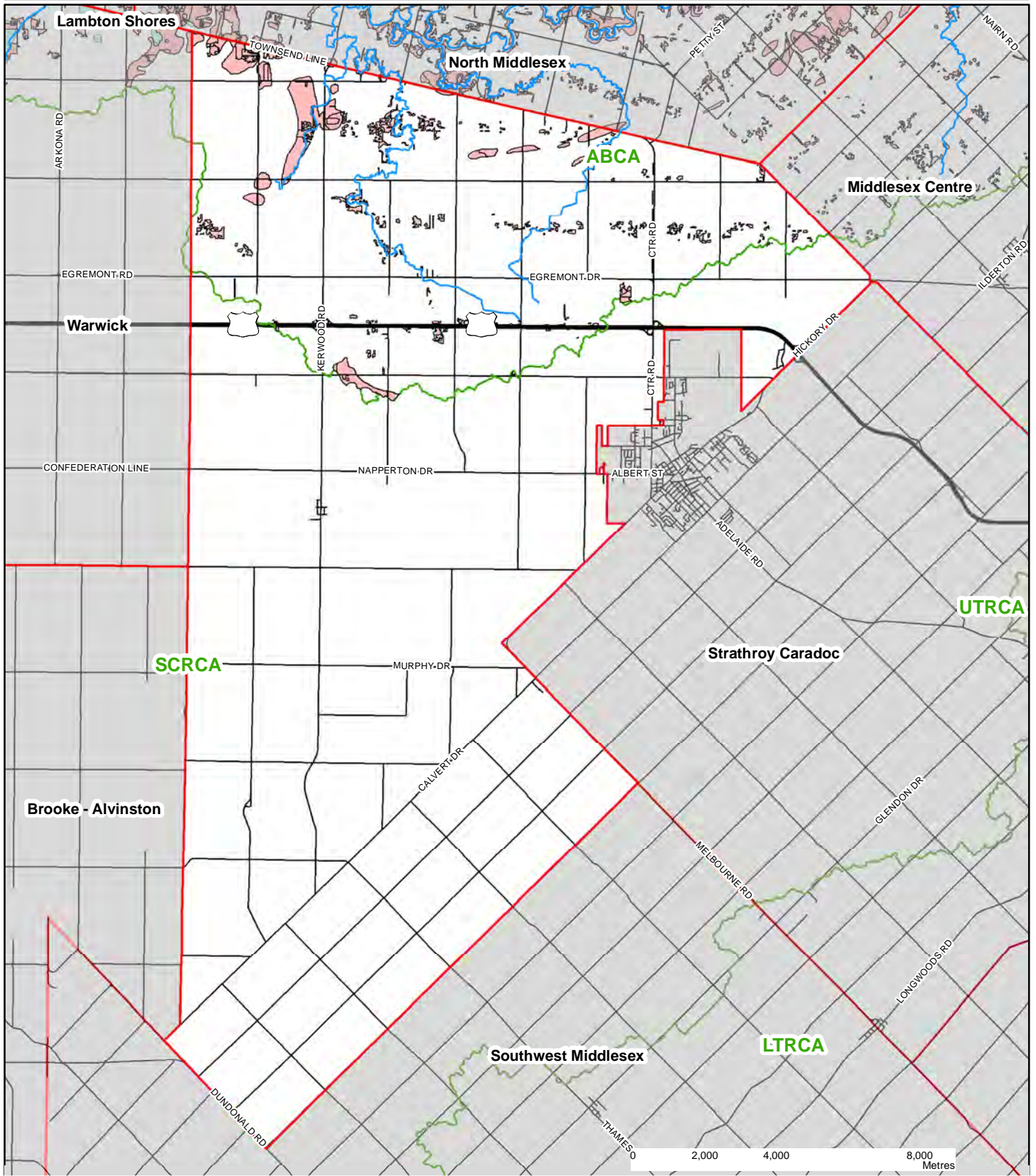


# Key Map (ABCA) Wellhead Protection Areas



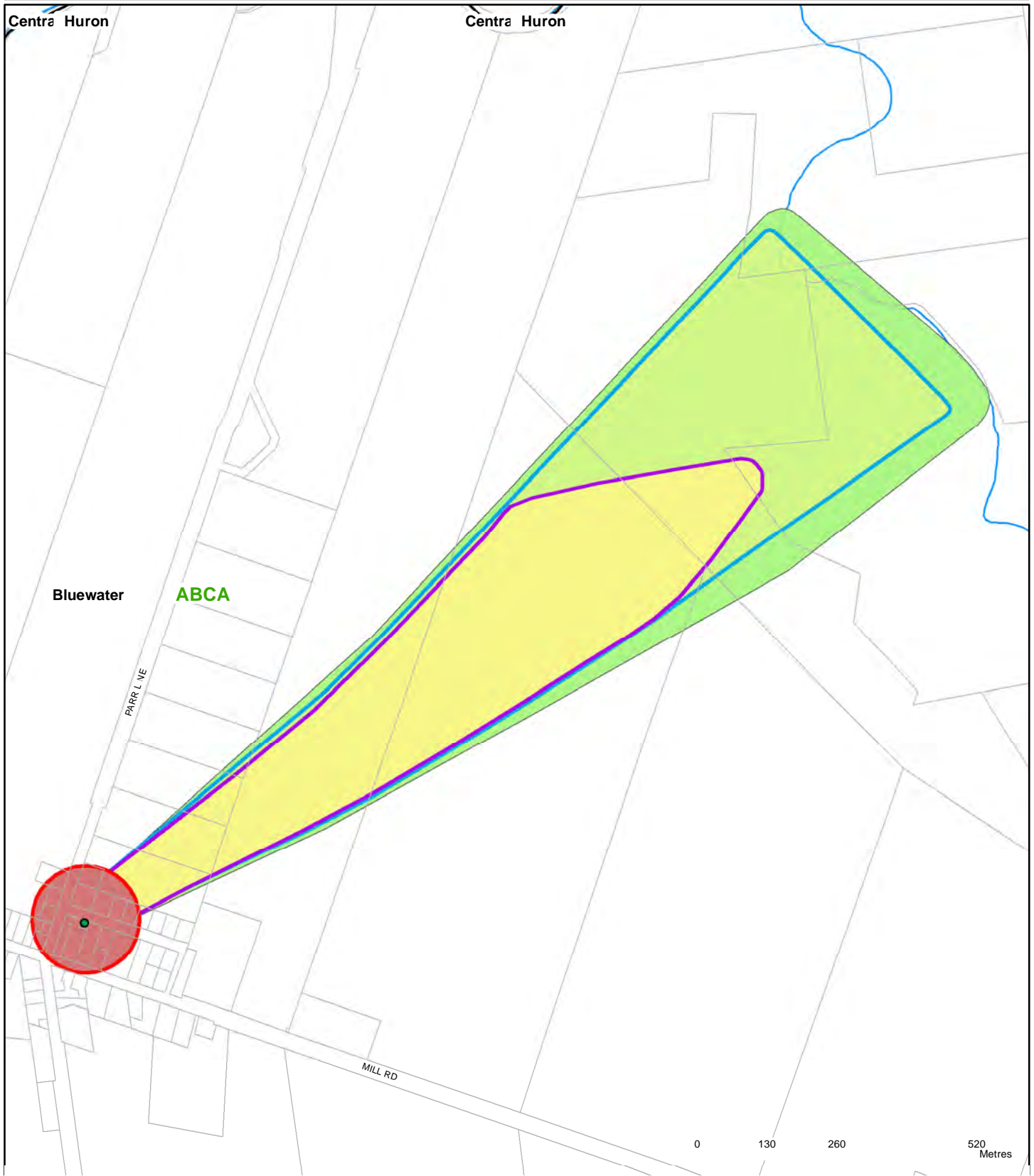
# Schedule AM-SGRA-HVA (Adelaide Metcalfe)



**Significant Groundwater Recharge Area**  
 SGRA  
**Highly Vulnerable Aquifer**  
 HVAs

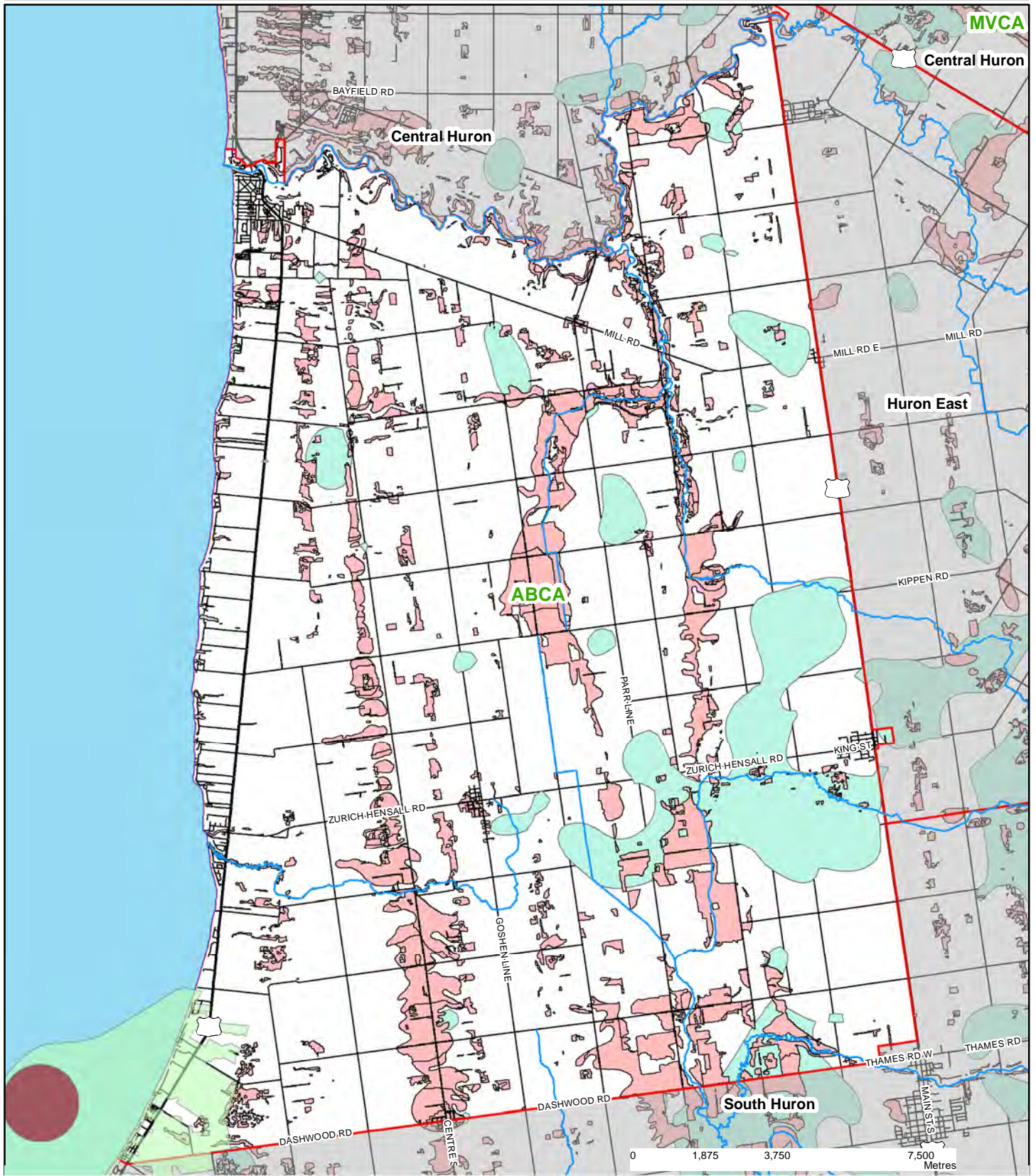
Major Watercourse  
 Municipal Boundary  
 CA Boundary

# Schedule: BW-Varn (Varna)



<b>Groundwater Vulnerability</b>			<b>Wellhead Protection Area</b>			Major Watercourse Municipal Boundary	
10	8	6	WHPA - A	WHPA - B	CA Boundary		
4	2		WHPA - C	Well Head	Parcels		

# Schedule BW-SGRA-HVA (Bluewater)



## Significant Groundwater Recharge Area

SGRA

## Highly Vulnerable Aquifer

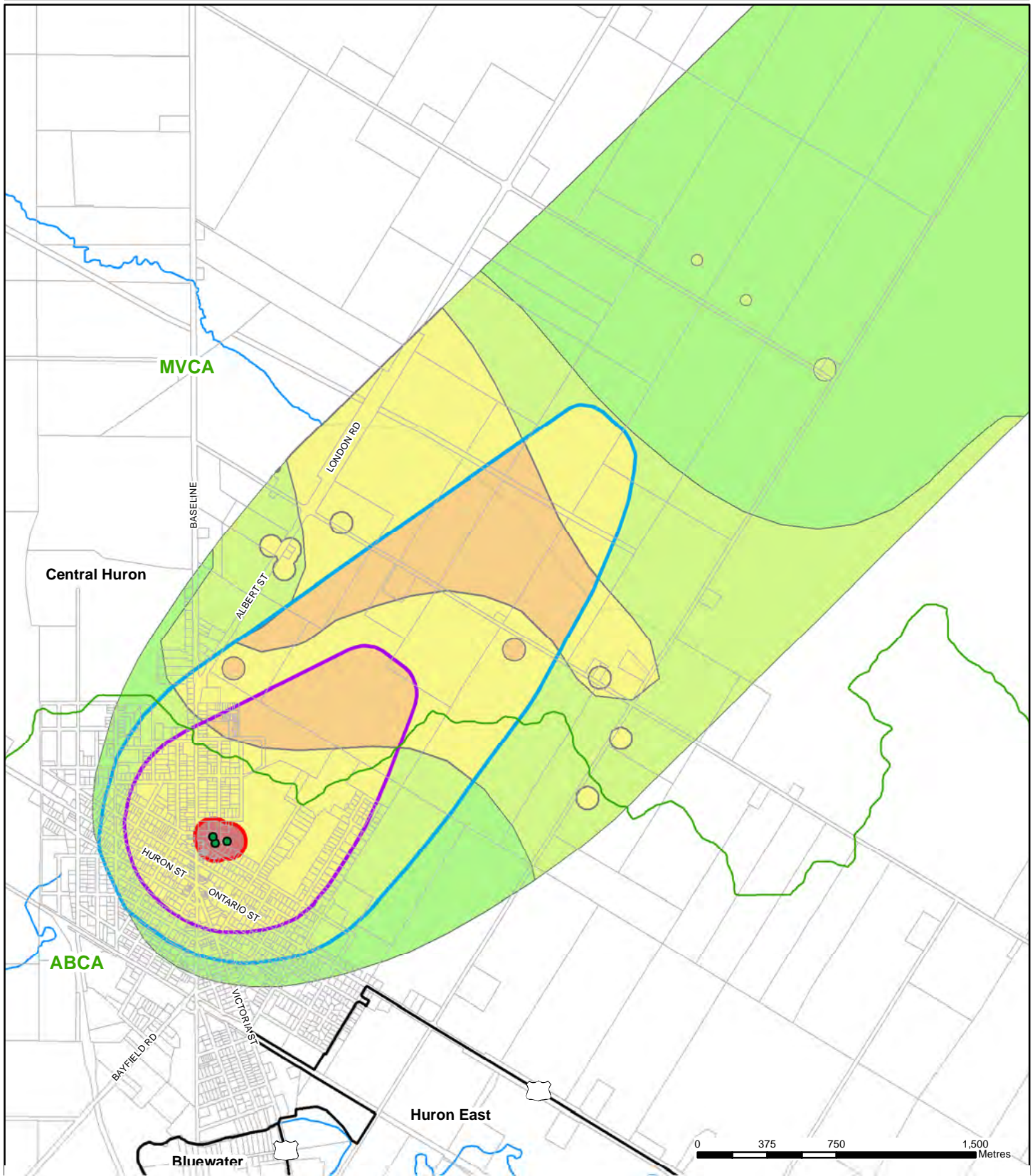
HVAs

Major Watercourse

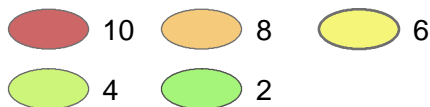
Municipal Boundary

CA Boundary

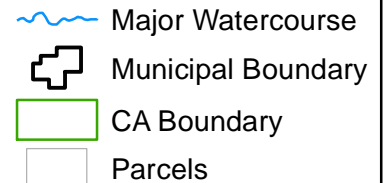
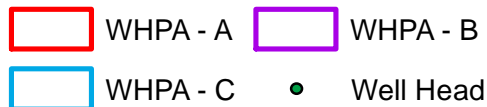
# Schedule: CH-Clin (Clinton)



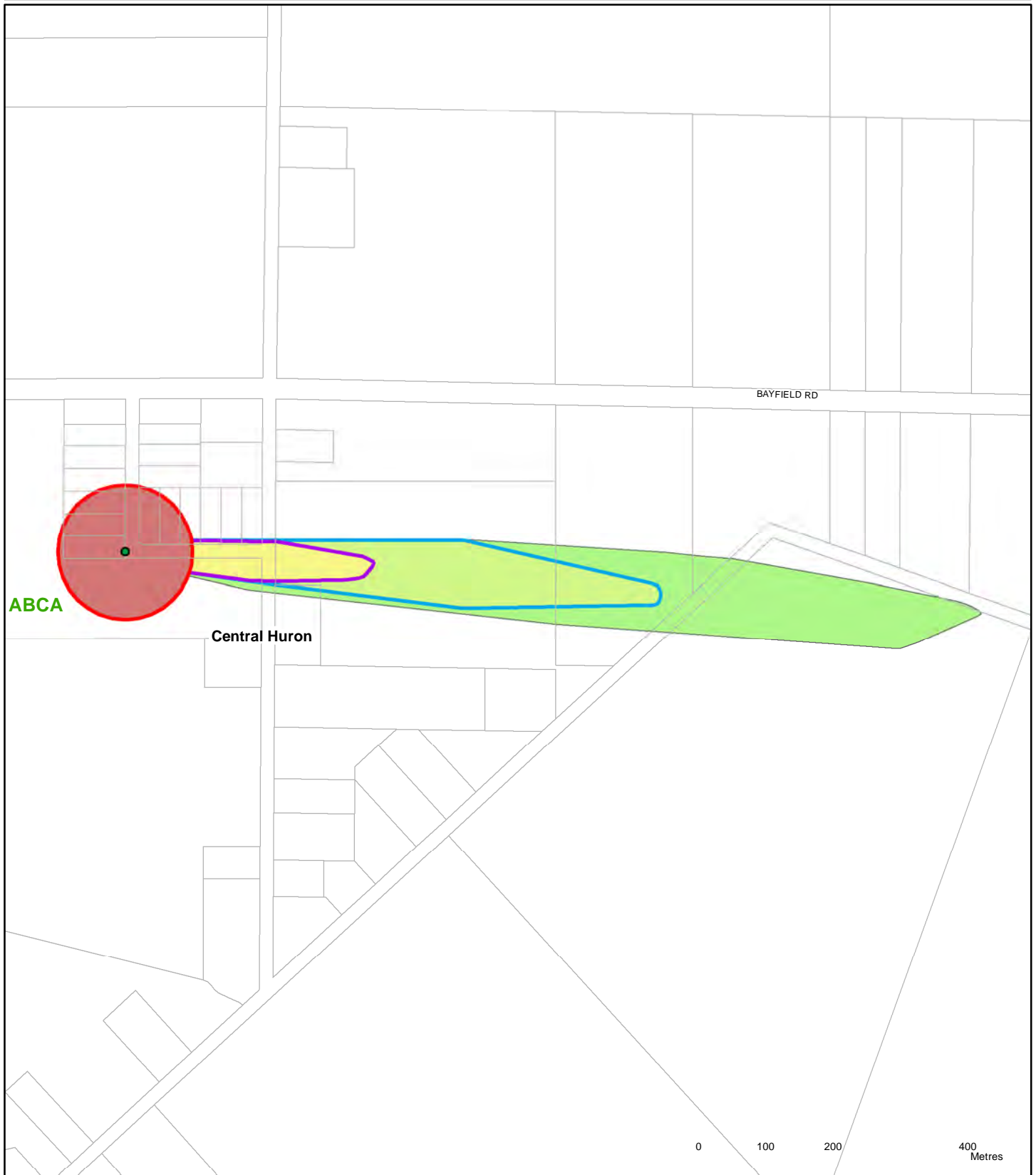
### Groundwater Vulnerability
















### Wellhead Protection Area

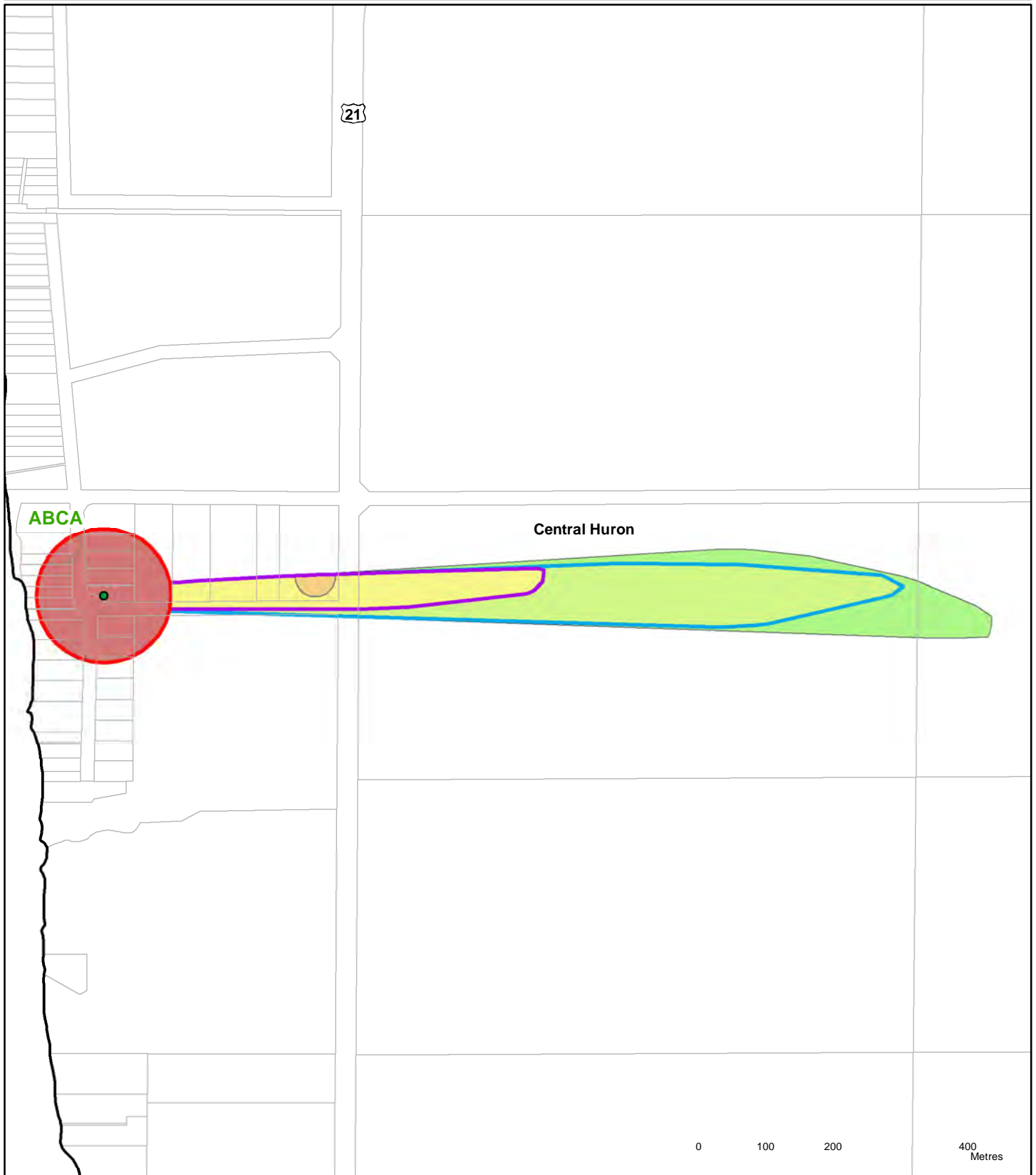


# Schedule: CH-Sam (Sam)



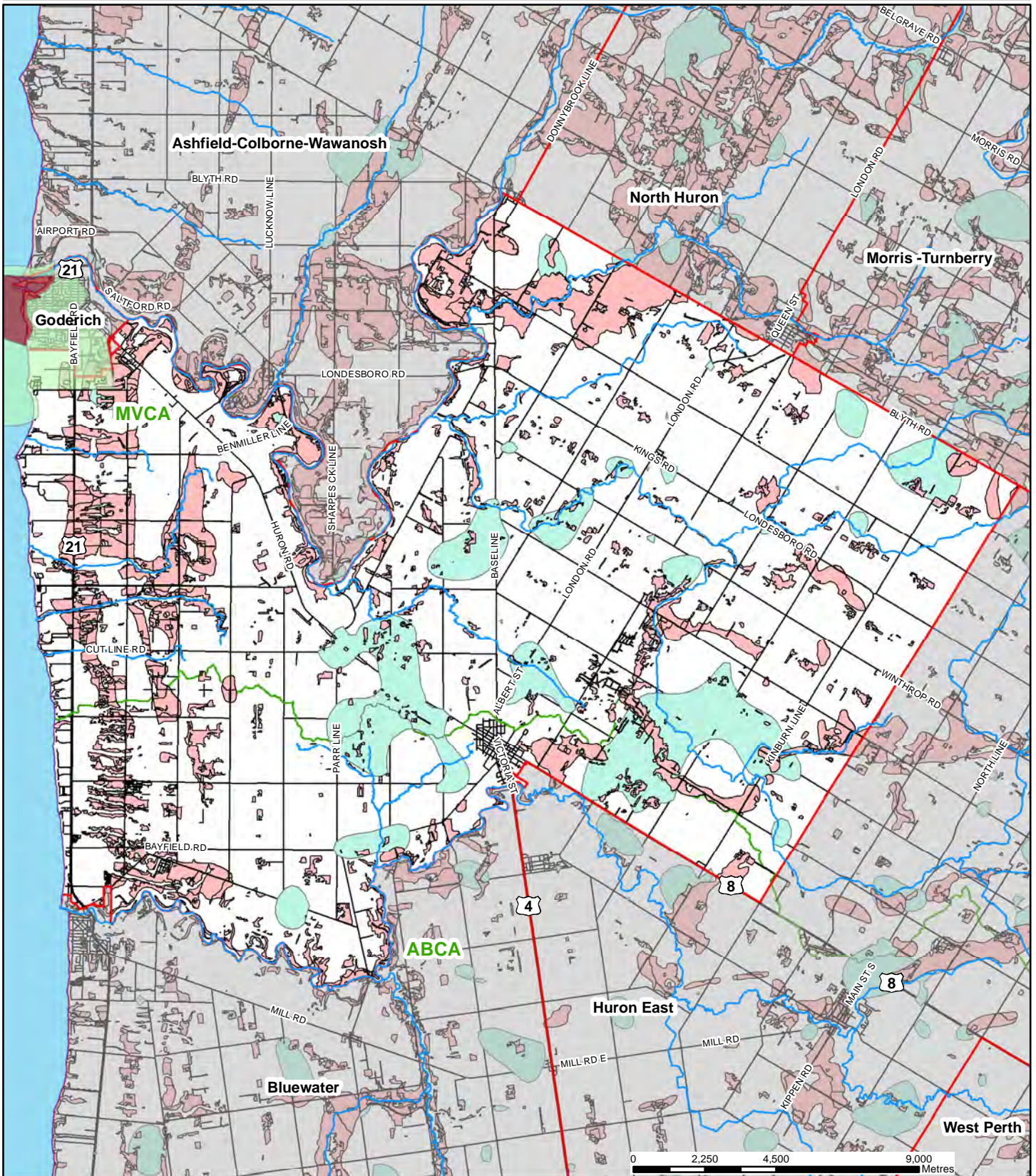
<b>Groundwater Vulnerability</b>			<b>Wellhead Protection Area</b>			 Major Watercourse	
 10	 8	 6	 WHPA - A	 WHPA - B	 Municipal Boundary		
 4	 2		 WHPA - C	 Well Head	 CA Boundary		
					 Parcels		

# Schedule: CH-Vand (Vandewatering)



<b>Groundwater Vulnerability</b> 10     8     6 4     2		<b>Wellhead Protection Area</b> WHPA - A     WHPA - B WHPA - C     Well Head		Major Watercourse Municipal Boundary CA Boundary Parcels
---	--	--	--	---

# Schedule CH-SGRA-HVA (Central Huron)



## Significant Groundwater Recharge Area

SGRA

## Highly Vulnerable Aquifer

HVAs

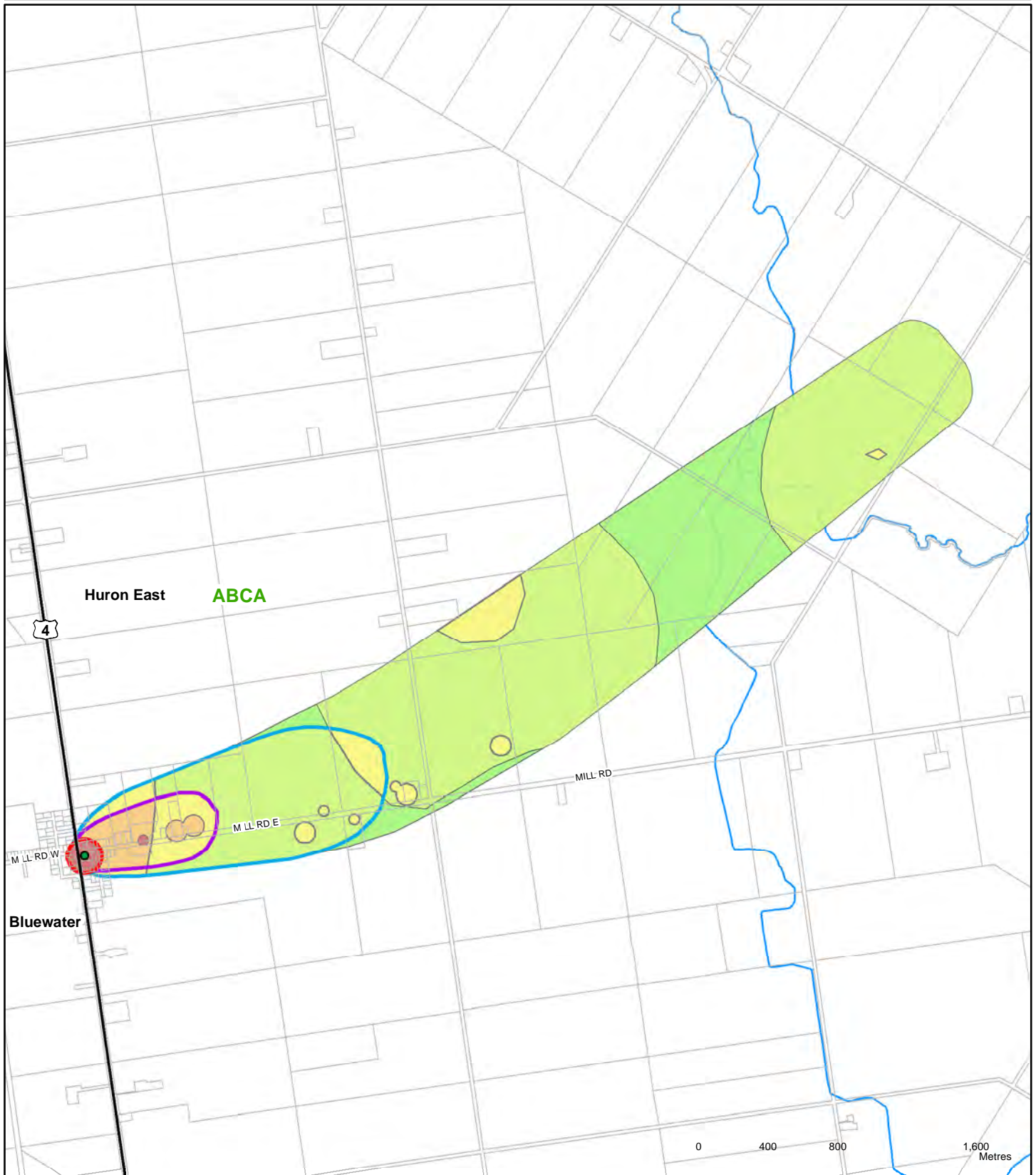
Major Watercourse

Municipal Boundary

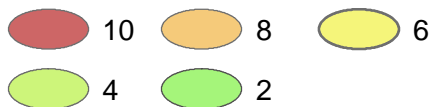
CA Boundary



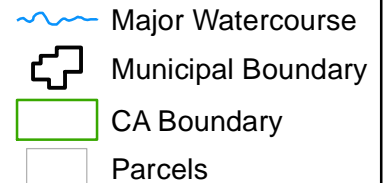
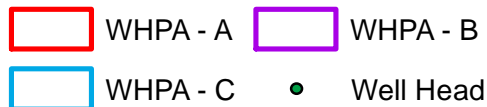
# Schedule: HE-Bruc (Brucefield)



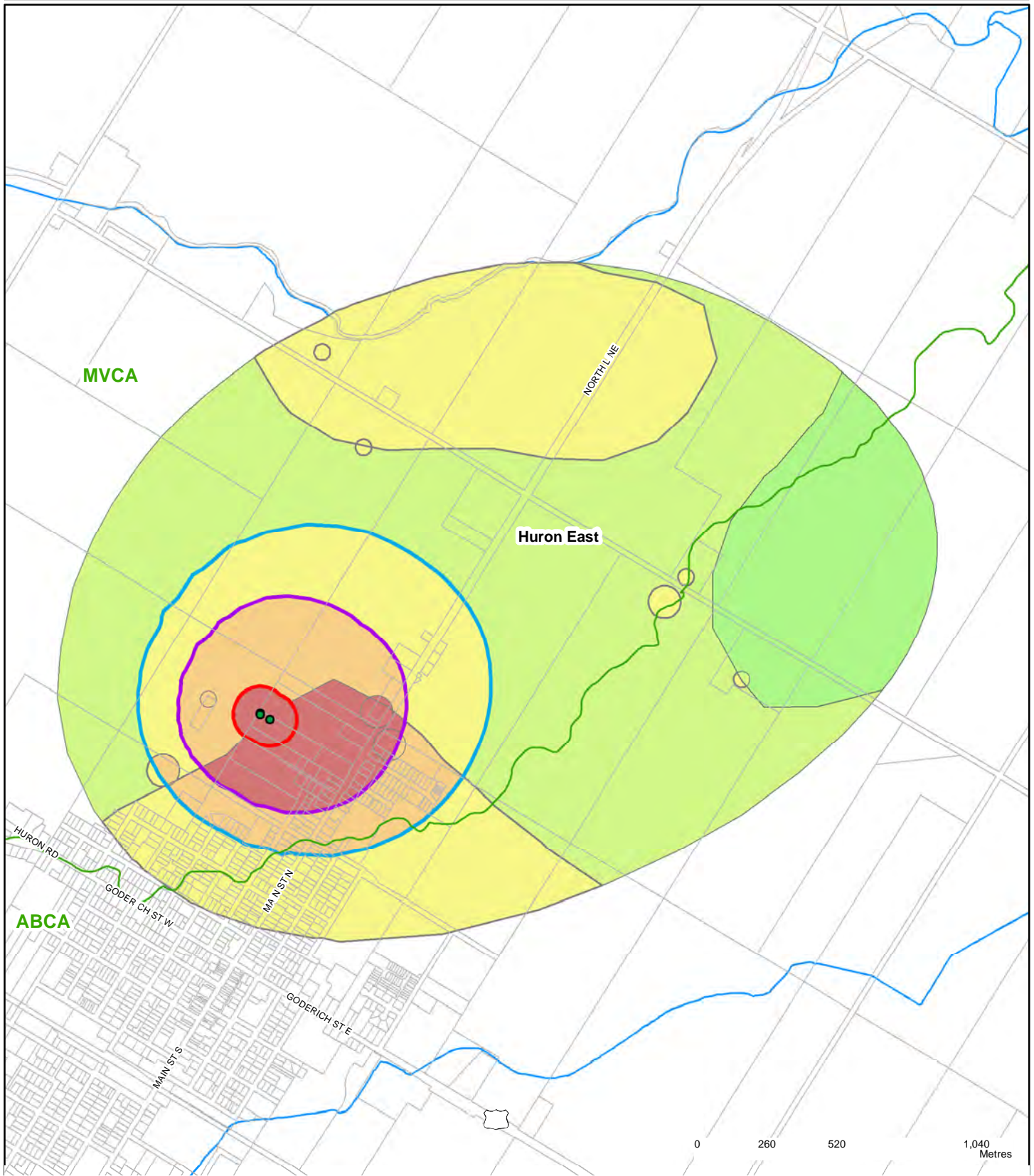
## Groundwater Vulnerability



## Wellhead Protection Area

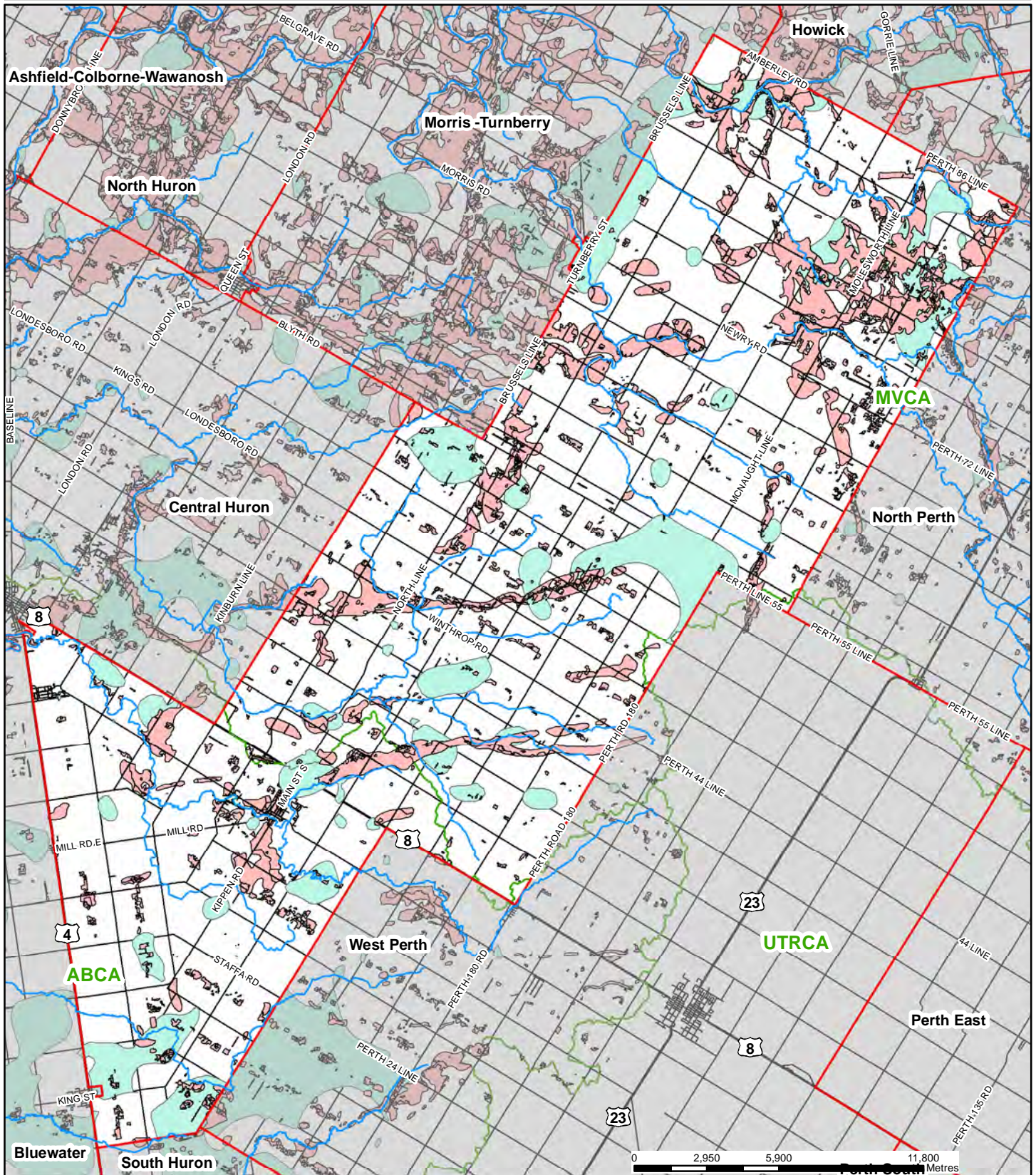


# Schedule: HE-Seaf (Seaforth)



<b>Groundwater Vulnerability</b>			<b>Wellhead Protection Area</b>		Major Watercourse
10	8	6	WHPA - A	WHPA - B	Municipal Boundary
4	2		WHPA - C	Well Head	CA Boundary
					Parcels

# Schedule HE-SGRA-HVA (Huron East)



## Significant Groundwater Recharge Area

SGRA

## Highly Vulnerable Aquifer

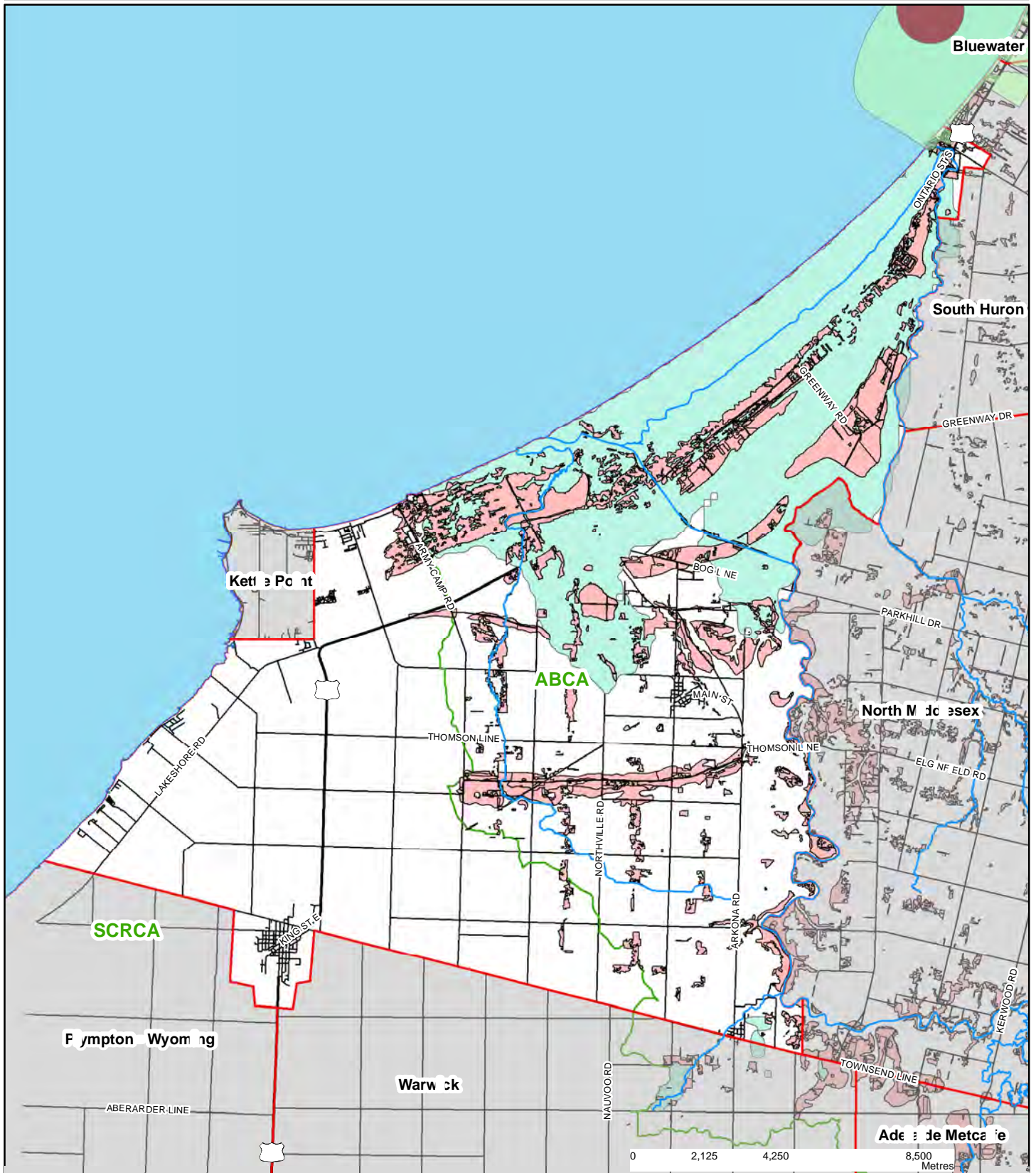
HVAs

Major Watercourse

Municipal Boundary

CA Boundary

# Schedule LS-SGRA-HVA (Lambton Shores)



## Significant Groundwater Recharge Area

SGRA

## Highly Vulnerable Aquifer

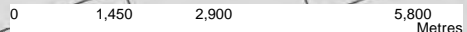
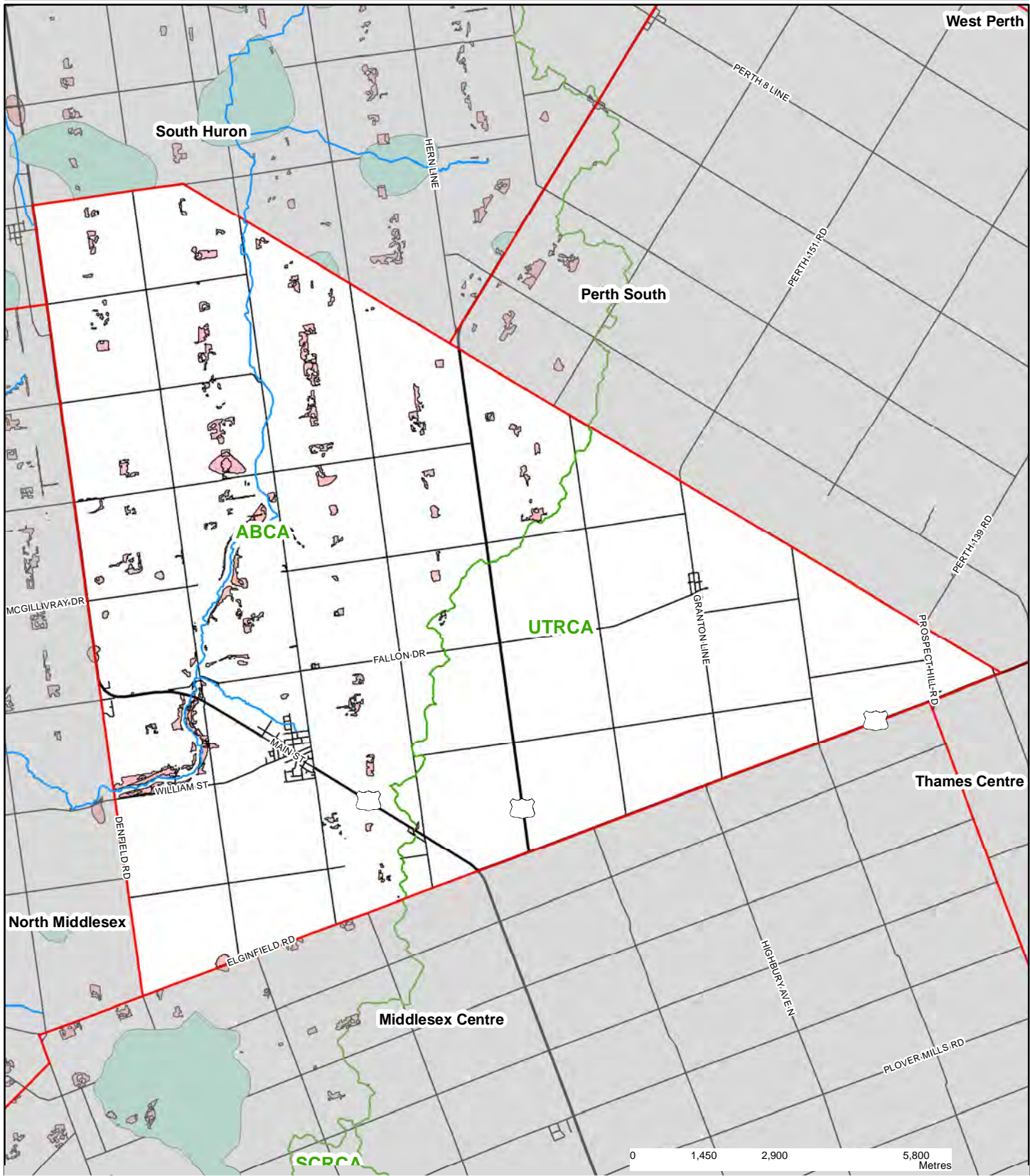
HVAs

Major Watercourse

Municipal Boundary

CA Boundary

# Schedule LB-SGRA-HVA (Lucan Biddulph)



## Significant Groundwater Recharge Area

SGRA

## Highly Vulnerable Aquifer

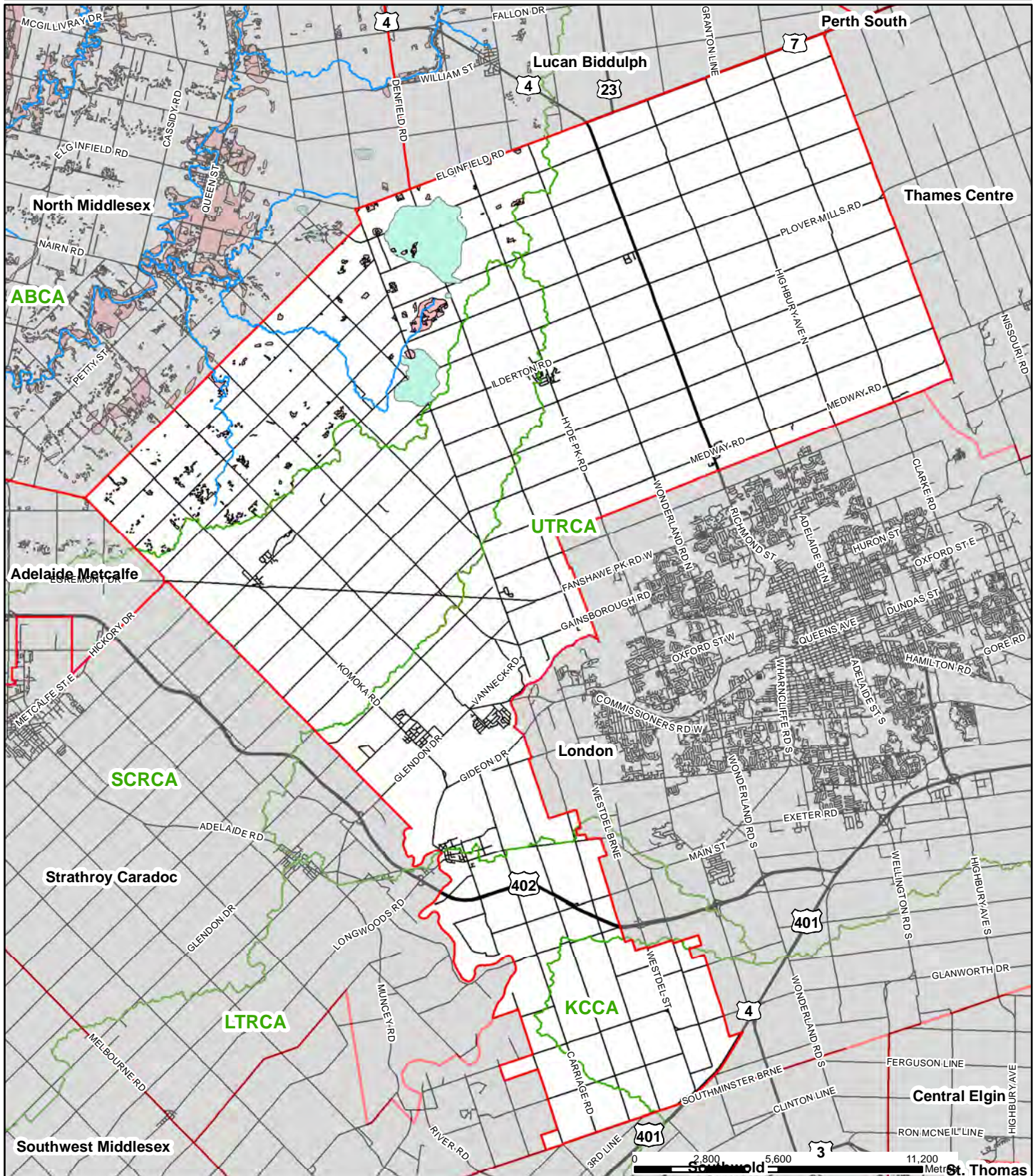
HVAs

Major Watercourse

Municipal Boundary

CA Boundary

# Schedule MC-SGRA-HVA (Middlesex Centre)






## Significant Groundwater Recharge Area

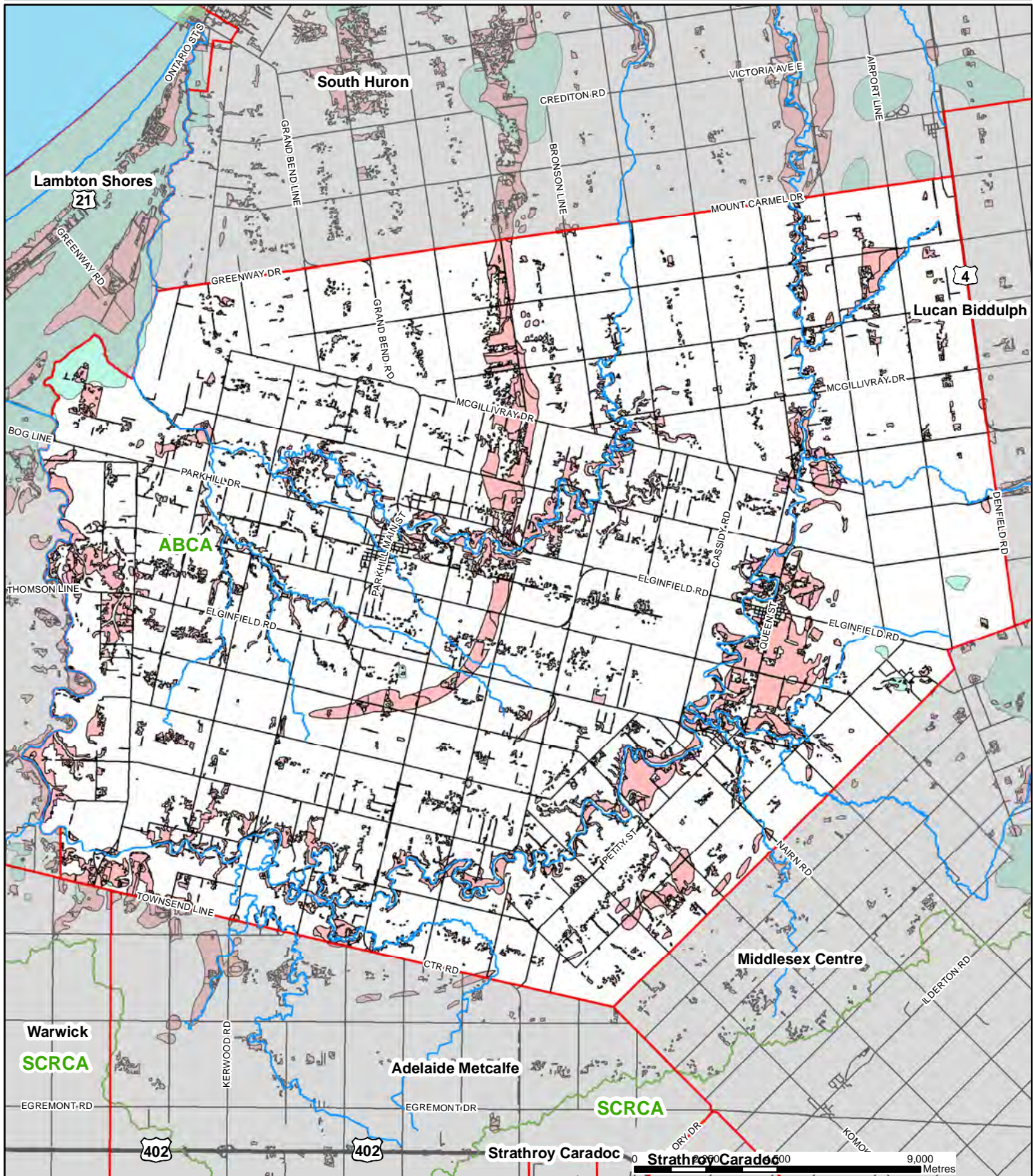
 SGRA

## Highly Vulnerable Aquifer

 HVAs

-  Major Watercourse
-  Municipal Boundary
-  CA Boundary

# Schedule NM-SGRA-HVA (North Middlesex)






## Significant Groundwater Recharge Area

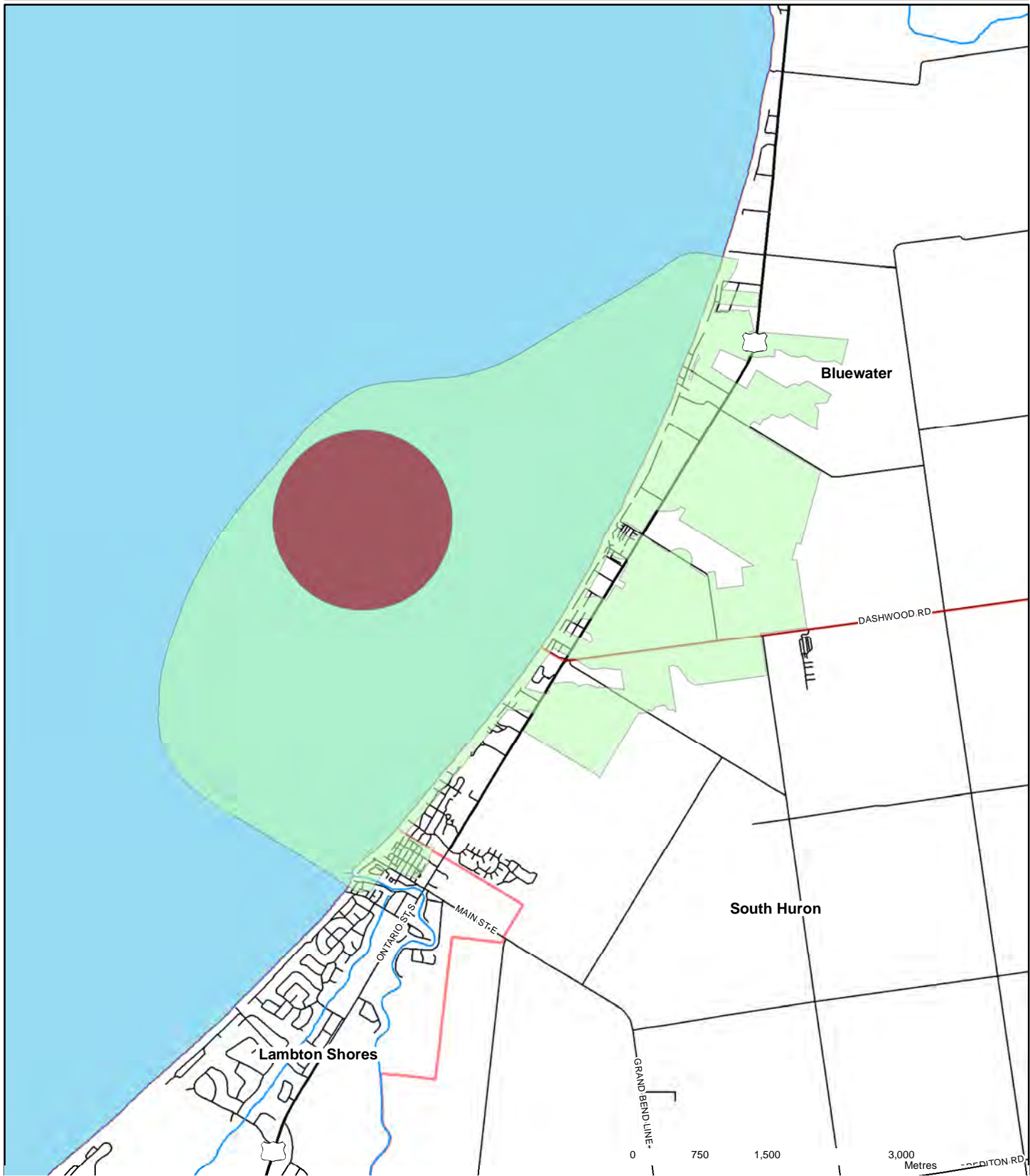
 SGRA

## Highly Vulnerable Aquifer

 HVAs

-  Major Watercourse
-  Municipal Boundary
-  CA Boundary

# Schedule SH-IPZ (South Huron)

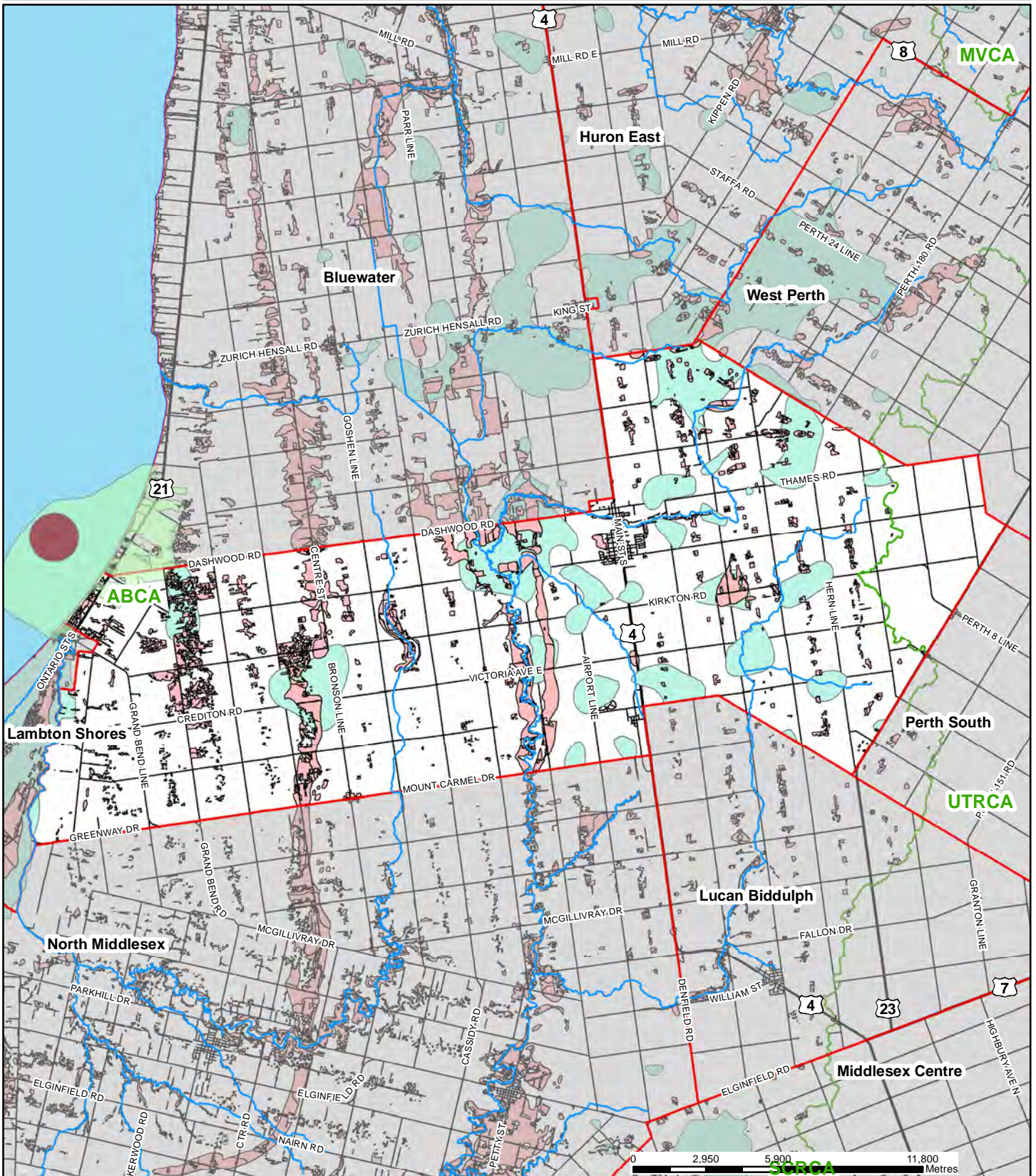


## Intake Protection Zones (1 & 2)

- IPZ1
- IPZ2
- Major Watercourse
- Municipal Boundary
- CA Boundary



# Schedule SH-SGRA-HVA (South Huron)



## Significant Groundwater Recharge Area

SGRA

## Highly Vulnerable Aquifer

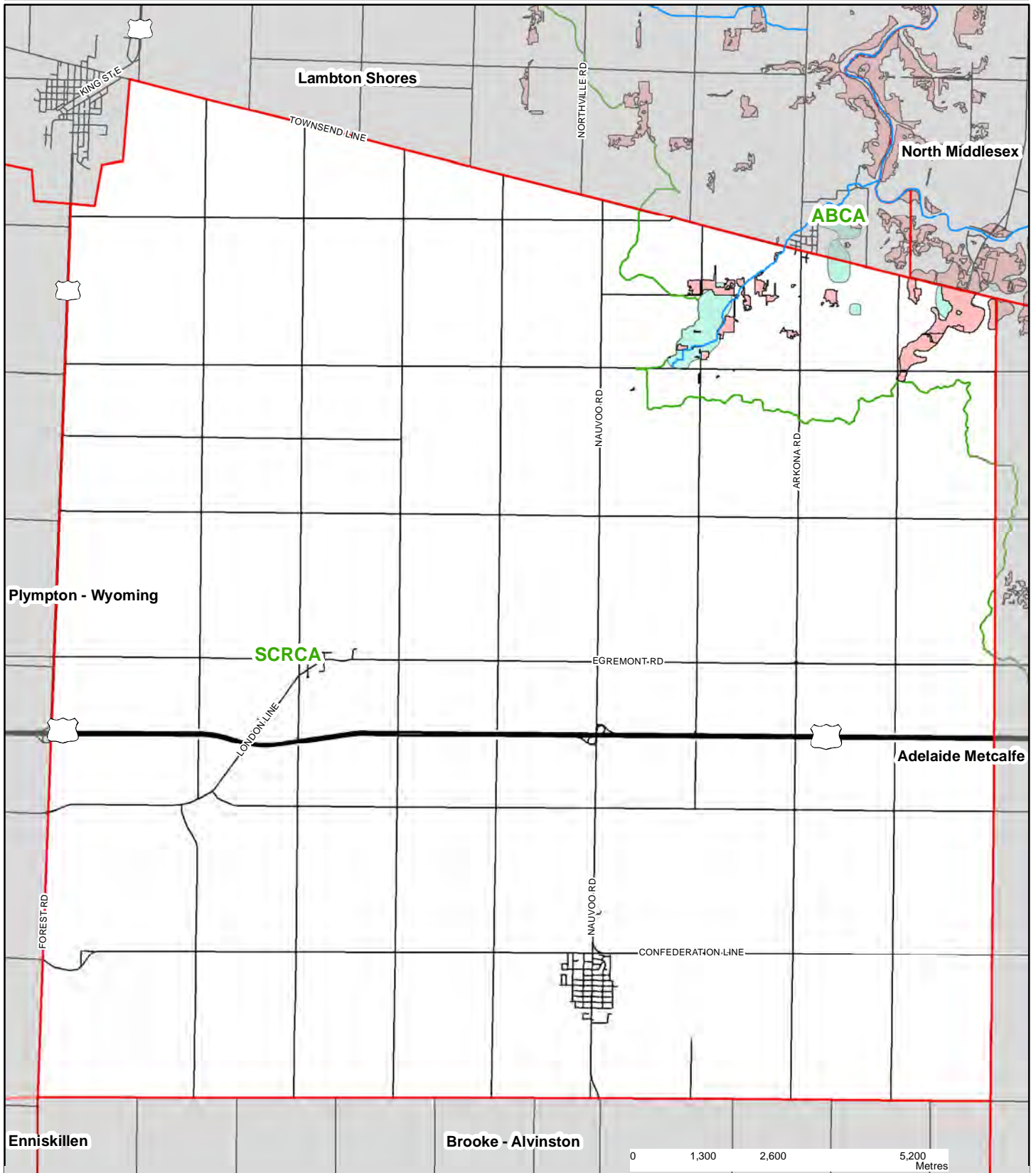
HVAs

Major Watercourse

Municipal Boundary

CA Boundary

# Schedule WW-SGRA-HVA (Warwick)



## Significant Groundwater Recharge Area

SGRA

## Highly Vulnerable Aquifer

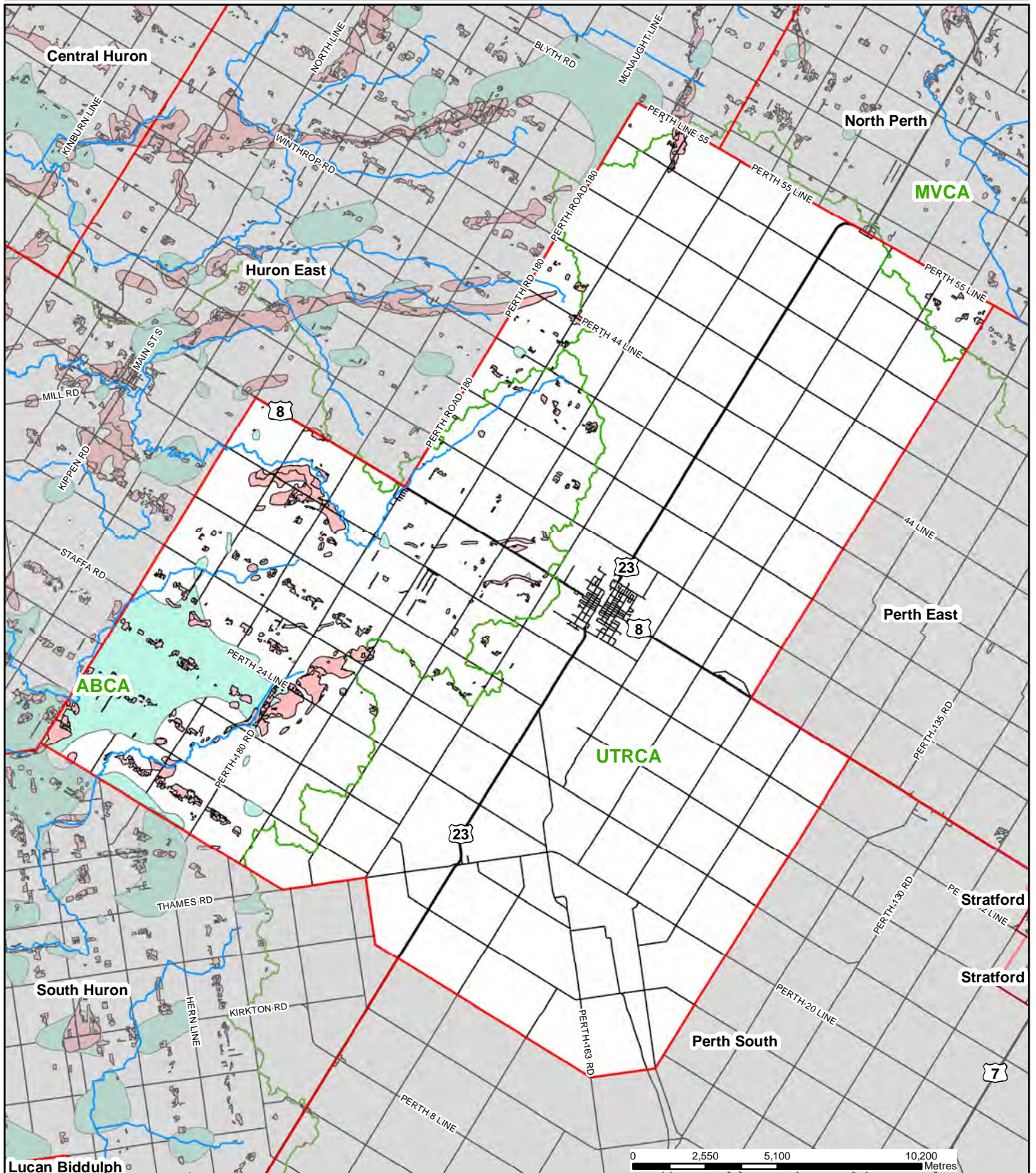
HVAs

Major Watercourse

Municipal Boundary

CA Boundary

# Schedule WP-SGRA-HVA (West Perth)



## Significant Groundwater Recharge Area

SGRA

## Highly Vulnerable Aquifer

HVAs

Major Watercourse

Municipal Boundary

CA Boundary