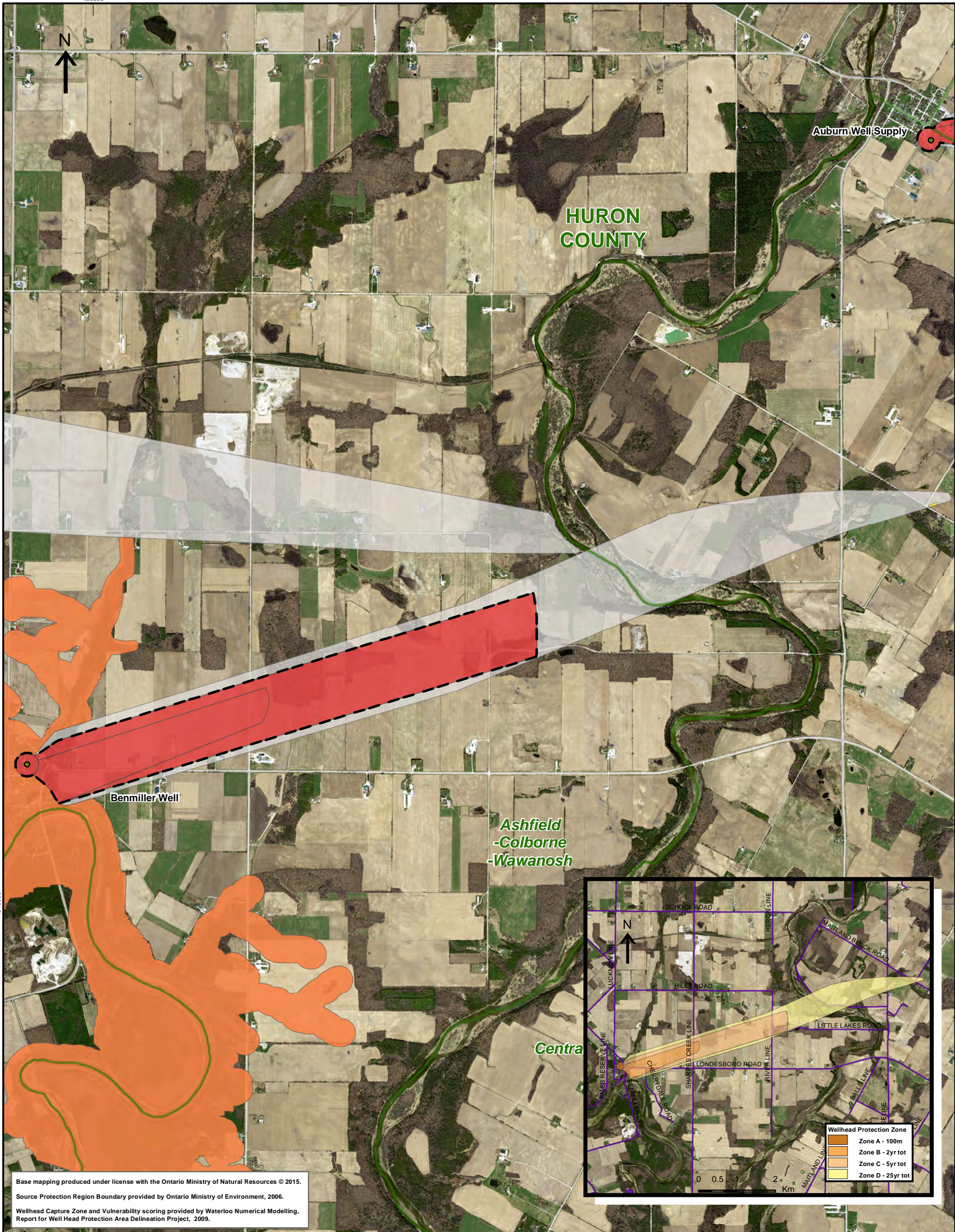


450000



Base mapping produced under license with the Ontario Ministry of Natural Resources © 2015.
 Source Protection Region Boundary provided by Ontario Ministry of Environment, 2006.
 Wellhead Capture Zone and Vulnerability scoring provided by Waterloo Numerical Modelling, Report for Well Head Protection Area Delineation Project, 2009.

450000

Map 4.16 Locations Where DNAPL Threats Can Be Significant, Moderate or Low Benmiller System

LEGEND

- | | | |
|--------------------------|---------------------------------------|----------------------|
| Source Protection Area | WHPA Threat Area | IPZ Threat Area GWVA |
| Municipal Boundary | Tot Zones - 100m, 2yr, 5yr | 6 |
| County Boundary | 25 year tot with GWVA 6 | 5.4 |
| Entire WHPA Capture Zone | 5 Year Tot Zone | 5 |
| Municipal Well | Century Heights GUDI Threat Area GWVA | 7.2 |

0 0.25 0.5 1 Km

Map Projection: UTM NAD83 Zone 17



Ausable Bayfield & Maitland Valley Source Protection Region

Map 4.16 Locations Where DNAPL Threats Can Be Significant, Moderate or Low Benmiller System



ABCAMVCA GIS Services
 Copyright © Queen's Printer, 2017
 This map is for illustrative purposes only, it is not a legal survey.

File: Y:\Projects_Mxds\SWPAR_Maps\MV\Benmiller_DNAPL.mxd
 Date: Dec 19, 2017
 Produced By: A. Clarke ABCA/MVCA DWSP Region