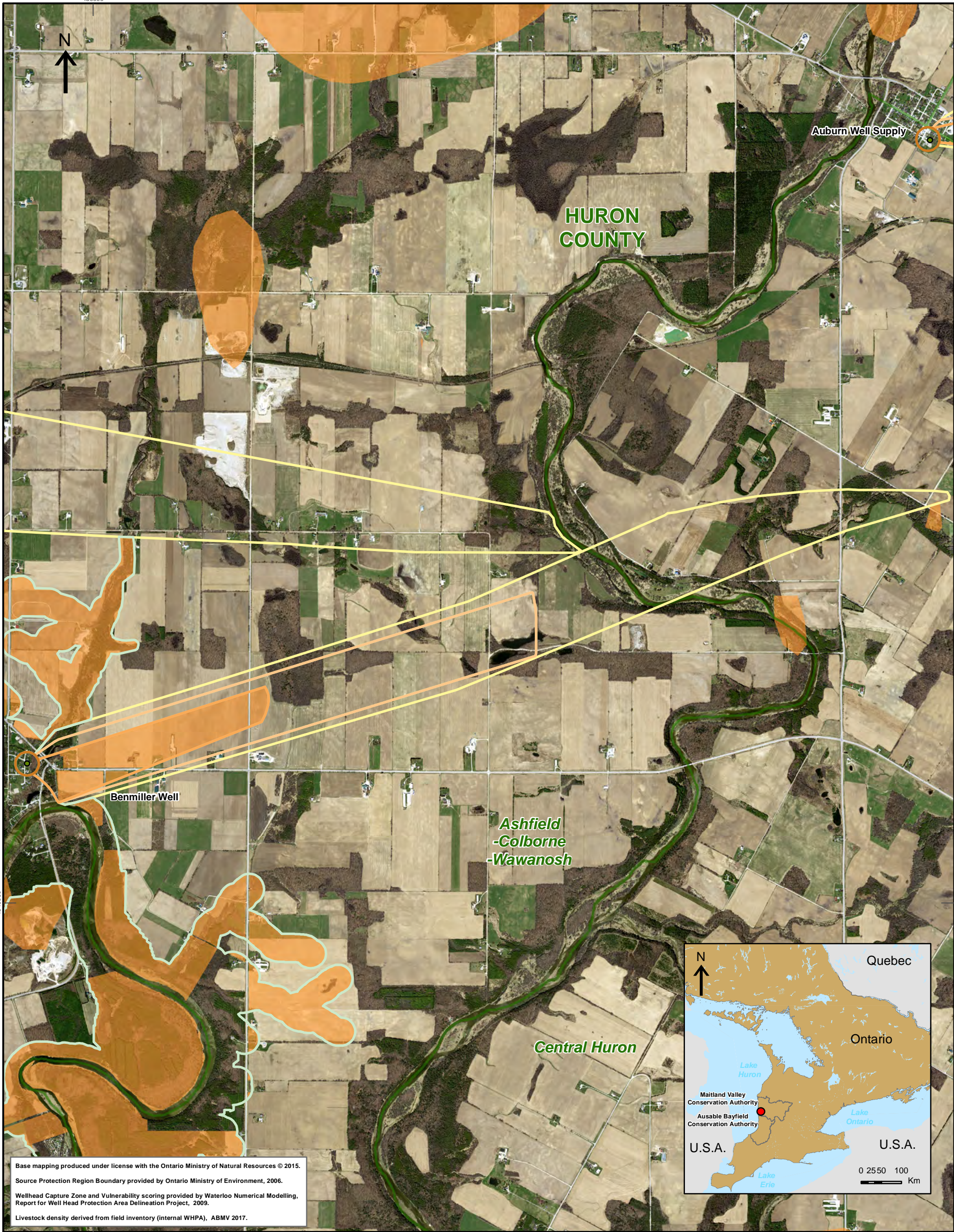


450000



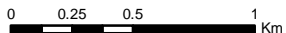
Base mapping produced under license with the Ontario Ministry of Natural Resources © 2015.  
 Source Protection Region Boundary provided by Ontario Ministry of Environment, 2006.  
 Wellhead Capture Zone and Vulnerability scoring provided by Waterloo Numerical Modelling, Report for Well Head Protection Area Delineation Project, 2009.  
 Livestock density derived from field inventory (internal WHPA), ABMV 2017.



Map 4.13  
 Livestock Density  
 Benmiller System

**LEGEND**

- |                        |                          |                         |
|------------------------|--------------------------|-------------------------|
| Source Protection Area | Wellhead Protection Zone | Nutrient Units per acre |
| Municipal Boundary     | Zone A - 100m            | < .5                    |
| County Boundary        | Zone B - 2yr tot         | .5 - < 1.0              |
| Municipal Well         | Zone C - 5yr tot         | > 1.0                   |
|                        | Zone D - 25yr tot        |                         |
|                        | Zone E - GUDI zone       |                         |
|                        | Intake Protection Zone   |                         |
|                        | IPZ1                     |                         |
|                        | IPZ2                     |                         |



Map Projection: UTM NAD83 Zone 17



Ausable Bayfield & Maitland Valley  
 Source Protection Region

**Map 4.13  
 Livestock Density  
 Benmiller System**

ABCAMVCA GIS Services  
 Copyright © Queen's Printer, 2017  
 This map is for illustrative purposes only, it is not a legal survey.

File: Y:\Projects\_Mxds\SWPIAR\_Maps\MV\Benmiller\_NU.mxd  
 Date: Dec 19, 2017  
 Produced By: A. Clarke ABCA/MVCA DWSP Region

