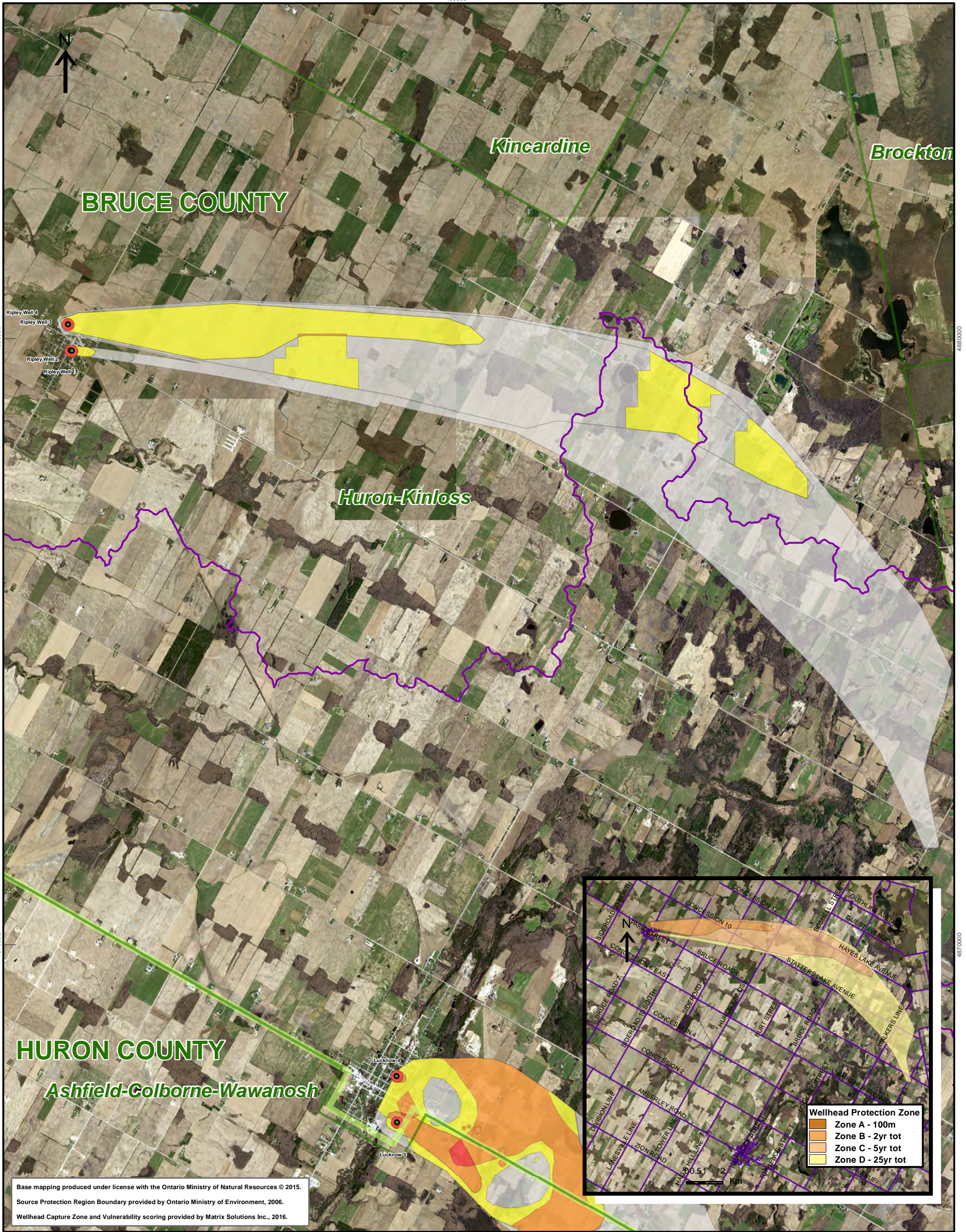


460000



4870000

4880000

4870000

4870000

460000

Base mapping produced under license with the Ontario Ministry of Natural Resources © 2015.

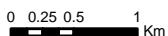
Source Protection Region Boundary provided by Ontario Ministry of Environment, 2006.

Wellhead Capture Zone and Vulnerability scoring provided by Matrix Solutions Inc., 2016.

Map 4.124 R5 Locations Where Chemical Threats Can Be Significant, Moderate or Low Ripley System

LEGEND

- Source Protection Area
- Municipal Boundary
- County Boundary
- Entire WHPA Capture Zone
- Municipal Well
- WHPA Threat Area GWVA**
- 10
- 8
- 6
- Century Heights GUDI Threat Area GWVA**
- 7.2
- IPZ Threat Area GWVA**
- 6
- 5.4
- 5



Map Projection: UTM NAD83 Zone 17



Ausable Bayfield & Maitland Valley Source Protection Region

Map 4.124 R5 Locations Where Chemical Threats Can Be Significant, Moderate or Low Ripley System



ABCAMVCA GIS Services
Copyright © Queen's Printer, 2017
This map is for illustrative purposes only, it is not a legal survey.

File: Y:\Projects_Mxds\SWPIAR_Maps\MVR\Map4.124R5_Chemical.mxd
Date: Dec 20, 2017
Produced By: A. Clarke ABCAMVCA DWSP Region