

Base mapping produced under license with the Ontario Ministry of Natural Resources © 2015.

Source Protection Region Boundary provided by Ontario Ministry of Environment, 2006.

Wellhead Capture Zone and Vulnerability scoring provided by Waterloo Numerical Modelling, Report for Well Head Protection Area Delineation Project, 2009.

Impervious Surface produced by ABMV SPR, 2010

Intake Protection Zone and Vulnerability scoring provided by W. F. Baird & Associates Coastal Engineers Ltd. Surface Water Vulnerability Analysis for Goderich Intake, August, 2007.

Round 2 Groundwater Technical Study Groundwater Vulnerability Assessment for the Municipalities of West Grey and Northern Bruce Peninsula Saugeen, Grey-Sauble, Northern Bruce Peninsula Source Protection Region. Conestoga-Rovers & Associates, 2008.

LEGEND

- Source Protection Area
- Municipal Boundary
- County Boundary
- Watercourse
- Road
- Cities and Towns
- Municipal Well
- Surface Water Intake

Wellhead Protection Zone

- Zone A - 100m
- Zone B - 2yr tot
- Zone C - 5yr tot
- Zone D - 25yr tot
- Zone E - GUDI zone

Intake Protection Zone

- IPZ1
- IPZ2

Impervious Surface Percent

- < 1.0
- 1.0 - < 8.0
- 8.0 - < 80.0
- > 80.0
- 1km Grid

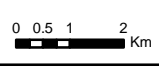


Map 4.6 Total Impervious Surface Within Vulnerable Areas Ashfield-Colborne-Wawanosh



ABCA/MVCA GIS Services
 Copyright © Queen's Printer, 2017
 This map is for illustrative purposes only, it is not a legal survey.

File: Y:\Projects_Mxds\SWPIAR_Maps\MVACW_Imperv.mxd
 Date: Dec 19, 2017
 Produced By: A. Clarke ABCA/MVCA DWSP Region



Map Projection: UTM NAD83 Zone 17