

460000



Auburn - DNAPLs			
Vulnerability Score	Provincial Table Number (Table Name)		
	Significant	Moderate	Low
WHPA A, B, C (<5 year TOT)	9 (DWAS)		
6 (within WHPA D)			

HURON COUNTY

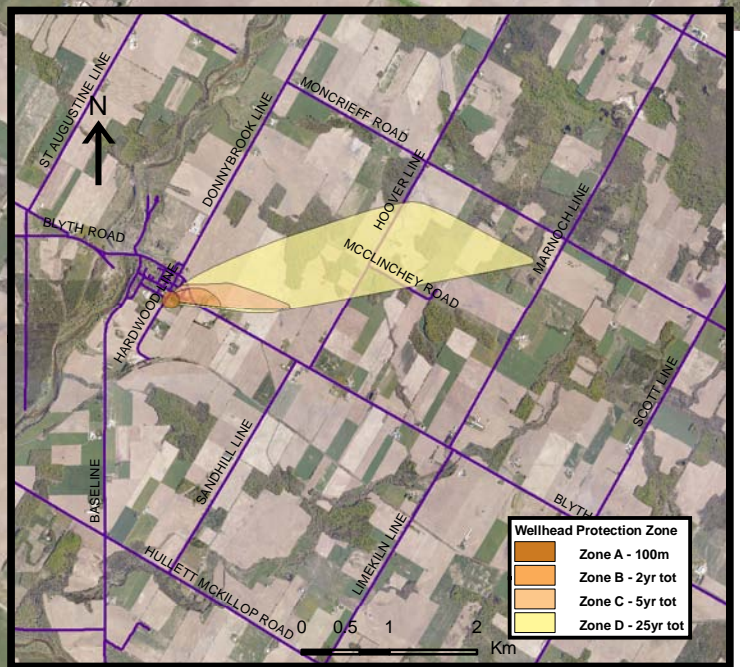
Ashfield - Colborne - Wawanosh

North Huron

Auburn Well Supply

Central Huron

Base mapping produced under license with the Ontario Ministry of Natural Resources © 2010.  
 Source Protection Region Boundary provided by Ontario Ministry of Environment, 2006.  
 Wellhead Capture Zone and Vulnerability scoring provided by Waterloo Numerical Modelling, Report for Well Head Protection Area Delineation Project, 2009.  
 Photos - First Base Solutions © 2006.



Wellhead Protection Zone	
Orange	Zone A - 100m
Light Orange	Zone B - 2yr tot
Yellow	Zone C - 5yr tot
Light Yellow	Zone D - 25yr tot

Map 4.58 Locations Where DNAPL Threats Can Be Significant, Moderate or Low Auburn System

**LEGEND**

Source Protection Area	<b>WHPA Threat Area</b>	IPZ Threat Area GWVA
Municipal Boundary	Tot Zones - 100m, 2yr, 5yr	6
County Boundary	25 year tot with GWVA 6	5.4
Entire WHPA Capture Zone	5 Year Tot Zone	5
Municipal Well	Century Heights GUDI Threat Area GWVA	
	7.2	

Map Projection: UTM NAD83 Zone 17

0 0.25 0.5 1 Km



**Map 4.58 Locations Where DNAPL Threats Can Be Significant, Moderate or Low Auburn System**



ABCAMVCA GIS Services  
 Copyright © Queen's Printer, 2010  
 This map is for illustrative purposes only, it is not a legal survey.  
 C:\swplsmall\_projects\bmross\whpa\_database\_threats\whpa\_dnapi\_auburn\_v10.mxd  
 Date: May 17, 2011  
 Produced By: Darrell Innes ABCA/MVCA DWSP Region