

460000



Auburn - Chemicals			
Vulnerability Score	Provincial Table Number (Table Name)		
	Significant	Moderate	Low
10	1 (CW10S)	3 (CW10M)	6 (CW10L)
8			
6		5 (CW6M)	8 (CW6L)

HURON COUNTY

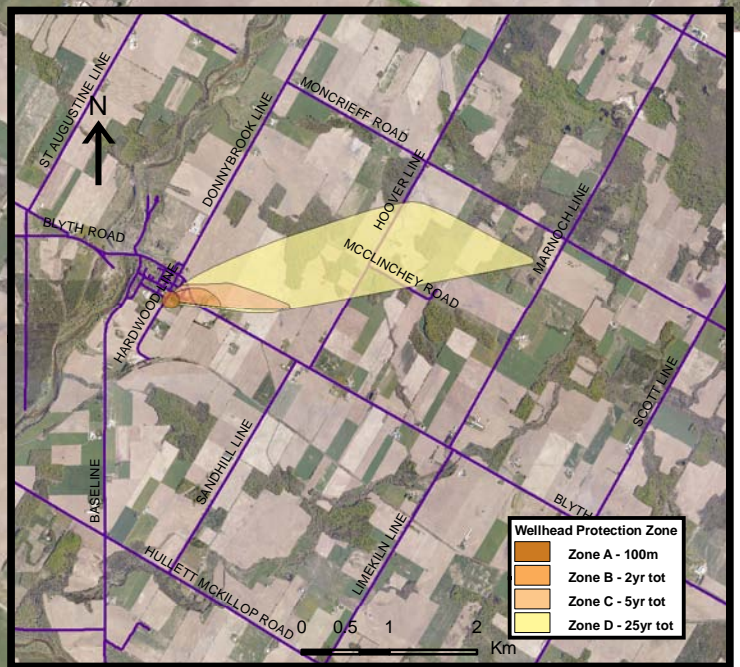
Ashfield - Colborne - Wawanosh

North Huron

Auburn Well Supply

Central Huron

Base mapping produced under license with the Ontario Ministry of Natural Resources © 2010.
 Source Protection Region Boundary provided by Ontario Ministry of Environment, 2006.
 Wellhead Capture Zone and Vulnerability scoring provided by Waterloo Numerical Modelling, Report for Well Head Protection Area Delineation Project, 2009.
 Photos - First Base Solutions © 2006.



Map 4.56 Locations Where Chemical Threats Can Be Significant, Moderate or Low Auburn System

LEGEND

- Source Protection Area
- Municipal Boundary
- County Boundary
- Entire WHPA Capture Zone
- Municipal Well

WHPA Threat Area GWVA

- 10
- 8
- 6

Century Heights GUDI Threat Area GWVA

- 7.2

IPZ Threat Area GWVA

- 6
- 5.4
- 5

0 0.25 0.5 1 Km

Map Projection: UTM NAD83 Zone 17



Ausable Bayfield & Maitland Valley Source Protection Region

Map 4.56 Locations Where Chemical Threats Can Be Significant, Moderate or Low Auburn System



ABCAMVCA GIS Services
 Copyright © Queen's Printer, 2010
 This map is for illustrative purposes only, it is not a legal survey.
 C:\swplsmall_projects\bmross\whpa_database_threats\whpa_chem_auburn_v10.mxd
 Date: May 17, 2011
 Produced By: Darrell Innes ABCA/MVCA DWSP Region