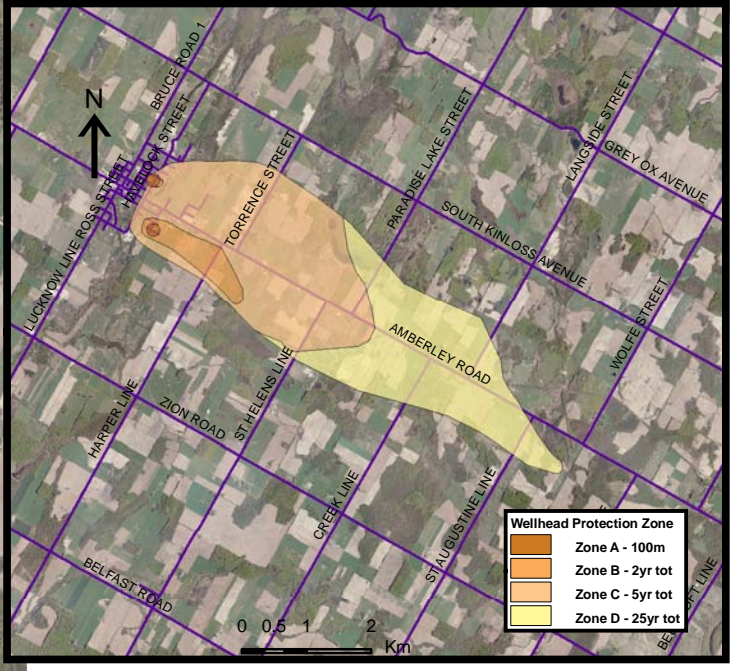


Lucknow - DNAPLs			
Vulnerability Score	Provincial Table Number (Table Name)		
	Significant	Moderate	Low
WHPA A, B, C (<5 year TOT)	9 (DWAS)		
6 (within WHPA D)		10 (DW6M)	11 (DW6L)

Base mapping produced under license with the Ontario Ministry of Natural Resources © 2010.
 Source Protection Region Boundary provided by Ontario Ministry of Environment, 2006.
 Round 2 Groundwater Technical Study Groundwater Vulnerability Assessment for the Municipalities of West Grey and Northern Bruce Peninsula Saugeen, Grey-Sauble, Northern Bruce Peninsula Source Protection Region.
 Conestoga-Rovers & Associates, Owen Sound, ON, September 2008.
 Photos - First Base Solutions © 2006.



LEGEND

County Boundary	WHPA Threat Area Tot Zones - 100m, 2yr, 5yr	IPZ Threat Area GWVA 6
Municipal Boundary	25 year tot with GWVA 6	5.4
Source Protection Area	5 Year Tot Zone	5
Entire WHPA Capture Zone	Century Heights GUDI Threat Area GWVA 7.2	
Municipal Well		

Map 4.44 Locations Where DNAPL Threats Can Be Significant, Moderate or Low Lucknow System

Map Projection: UTM NAD83 Zone 17

0 0.25 0.5 1 Km

DRINKING WATER SOURCE PROTECTION
 ACT FOR CLEAN WATER

Ausable Bayfield & Maitland Valley Source Protection Region

Map 4.44 Locations Where DNAPL Threats Can Be Significant, Moderate or Low Lucknow System

Ontario

ABCAMVCA GIS Services
 Copyright © Queen's Printer, 2010
 This map is for illustrative purposes only, it is not a legal survey.

C:\swp\small_projects\bmross\whpa_database_threats\whpa_dnapl_lucknow_v10.mxd
 Date: May 17, 2011
 Produced By: Darrell Innes ABCA/MVCA DWSP Region