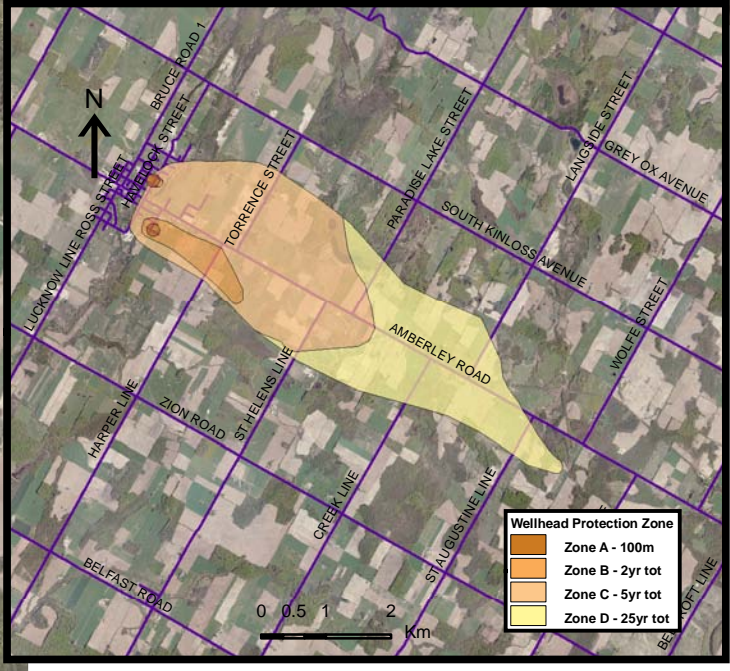


Lucknow - Chemicals			
Vulnerability Score	Provincial Table Number (Table Name)		
	Significant	Moderate	Low
10	1 (CW10S)	3 (CW10M)	6 (CW10L)
8	2 (CW8S)	4 (CW8M)	7 (CW8L)
6		5 (CW6M)	8 (CW6L)

Base mapping produced under license with the Ontario Ministry of Natural Resources © 2010.
 Source Protection Region Boundary provided by Ontario Ministry of Environment, 2006.
 Round 2 Groundwater Technical Study Groundwater Vulnerability Assessment for the Municipalities of West Grey and Northern Bruce Peninsula Saugeen, Grey-Sauble, Northern Bruce Peninsula Source Protection Region, Conestoga-Rovers & Associates, Owen Sound, ON, September 2008.
 Photos - First Base Solutions © 2006.



LEGEND

Source Protection Area	WHPA Threat Area GWVA	IPZ Threat Area GWVA
Municipal Boundary	10	6
County Boundary	8	5.4
Entire WHPA Capture Zone	6	5
Municipal Well	Century Heights GUDI Threat Area GWVA	
	7.2	

Map 4.42 Locations Where Chemical Threats Can Be Significant, Moderate or Low Lucknow System

Map Projection: UTM NAD83 Zone 17

0 0.25 0.5 1 Km

DRINKING WATER SOURCE PROTECTION
 ACT FOR CLEAN WATER

Ausable Bayfield & Maitland Valley Source Protection Region

Map 4.42 Locations Where Chemical Threats Can Be Significant, Moderate or Low Lucknow System

Ontario

ABCAMVCA GIS Services
 Copyright © Queen's Printer, 2010
 This map is for illustrative purposes only, it is not a legal survey.

C:\swp\small_projects\bmross\whpa_database_threats\whpa_chem_lucknow_v10.mxd
 Date: May 17, 2011
 Produced By: Darrell Innes ABCA/MVCA DWSP Region