

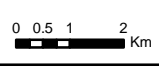
Base mapping produced under license with the Ontario Ministry of Natural Resources © 2015.
 Source Protection Region Boundary provided by Ontario Ministry of Environment, 2006.
 Wellhead Capture Zone and Vulnerability scoring provided by Waterloo Numerical Modelling, Report for Well Head Protection Area Delineation Project, 2009.
 HVA derived from ISI based upon County Groundwater Studies.
 Intake Protection Zone and Vulnerability scoring provided by W. F. Baird & Associates Coastal Engineers Ltd. Surface Water Vulnerability Analysis for Goderich Intake, August, 2007.
 Round 2 Groundwater Technical Study Groundwater Vulnerability Assessment for the Municipalities of West Grey and Northern Bruce Peninsula Sauguen, Grey-Sauguen, Northern Bruce Peninsula Source Protection Region. Conestoga-Rovers & Associates, 2008.

Map 4.4
Highly Vulnerable Aquifers
Ashfield-Colborne-Wawanosh

LEGEND

- | | | |
|------------------------|---|---|
| Source Protection Area | Wellhead Protection Zone Zone A - 100m | Highly Vulnerable Aquifer High ISI - GWVA Score 6 |
| Municipal Boundary | Wellhead Protection Zone Zone B - 2yr tot | |
| County Boundary | Wellhead Protection Zone Zone C - 5yr tot | |
| Road | Wellhead Protection Zone Zone D - 25yr tot | |
| Watercourse | Wellhead Protection Zone Zone E - GUDI zone | |
| Cities and Towns | Intake Protection Zone IPZ1 | |
| Municipal Well | Intake Protection Zone IPZ2 | |
| Surface Water Intake | | |

Map Projection: UTM NAD83 Zone 17



**Map 4.4
Highly Vulnerable Aquifers
Ashfield-Colborne-Wawanosh**

ABCAMVCA GIS Services
 Copyright © Queen's Printer, 2017
 This map is for illustrative purposes only, it is not a legal survey.

File: Y:\Projects_Mxds\SWPIAR_Maps\MVACW_HVA.mxd
 Date: Dec 19, 2017
 Produced By: A. Clarke ABCA/MVCA DWSP Region

