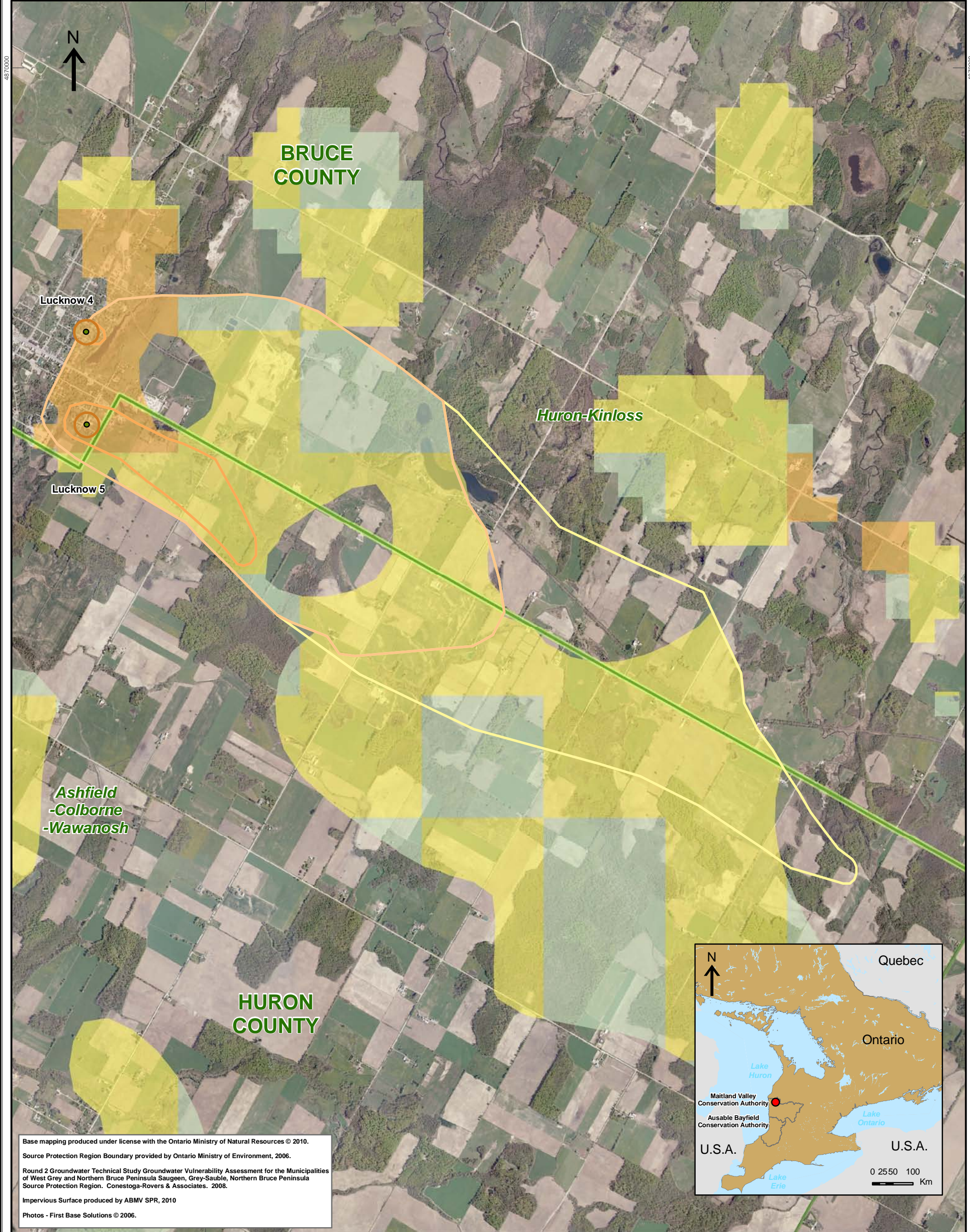


460000



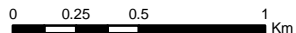
Base mapping produced under license with the Ontario Ministry of Natural Resources © 2010.
 Source Protection Region Boundary provided by Ontario Ministry of Environment, 2006.
 Round 2 Groundwater Technical Study Groundwater Vulnerability Assessment for the Municipalities of West Grey and Northern Bruce Peninsula Saugeen, Grey-Sauble, Northern Bruce Peninsula Source Protection Region. Conestoga-Rovers & Associates. 2008.
 Impervious Surface produced by ABMV SPR, 2010
 Photos - First Base Solutions © 2006.



Map 4.39 Total Impervious Surface Within Vulnerable Areas Lucknow System

LEGEND

- | | | |
|------------------------|-------------------------------|----------------------------|
| Source Protection Area | Wellhead Protection Zone | Impervious Surface Percent |
| Municipal Boundary | Zone A - 100m | < 1.0 |
| County Boundary | Zone B - 2yr tot | 1.0 - < 8.0 |
| Municipal Well | Zone C - 5yr tot | 8.0 - < 80.0 |
| | Zone D - 25yr tot | > 80.0 |
| | Zone E - GUDI zone | 1km Grid |
| | Intake Protection Zone | |
| | IPZ1 | |
| | IPZ2 | |



Map Projection: UTM NAD83 Zone 17



Ausable Bayfield & Maitland Valley Source Protection Region

Map 4.39 Total Impervious Surface Within Vulnerable Areas Lucknow System



ABCAMVCA GIS Services
 Copyright © Queen's Printer, 2010
 This map is for illustrative purposes only, it is not a legal survey.

C:\swp\small_projects\cathy\assessment_report_whpa\whpa_imperv_surface_lucknow_v9.mxd
 Date: May 17, 2011
 Produced By: Darrell Innes ABCA/MVCA DWSP Region