

Huron Sands - Pathogens			
Vulnerability Score	Provincial Table Number (Table Name)		
	Significant	Moderate	Low
10	12 (PW10S)	13 (PW10M)	
8			
6			16 (PW6L)

Ashfield  
-Colborne  
-Wawanosh

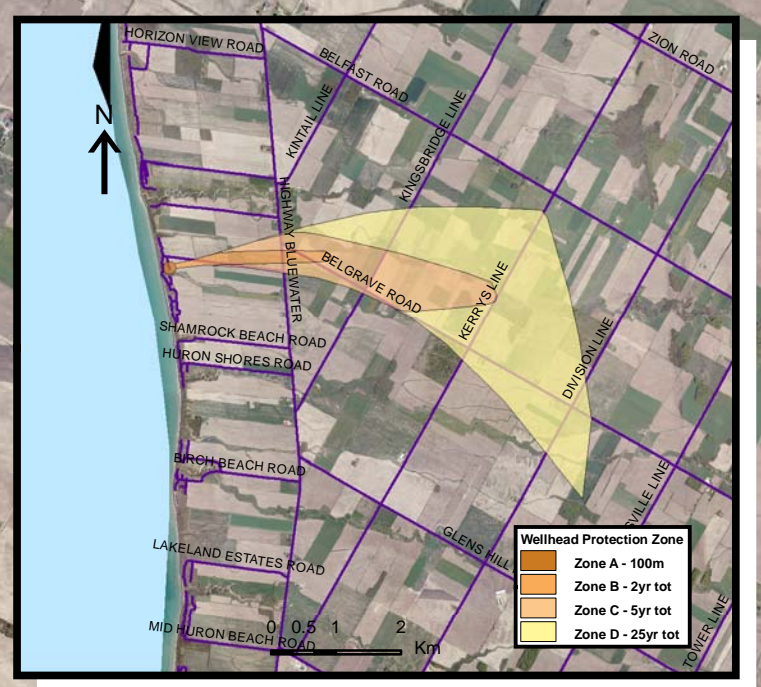
Huron Sands Well

Lake

Huron

HURON COUNTY

Base mapping produced under license with the Ontario Ministry of Natural Resources © 2010.  
 Source Protection Region Boundary provided by Ontario Ministry of Environment, 2006.  
 Wellhead Capture Zone and Vulnerability scoring provided by Waterloo Numerical Modelling, Report for Well Head Protection Area Delineation Project, 2009.  
 Photos - First Base Solutions © 2006.



Map 4.36 Locations Where Pathogen Threats Can Be Significant, Moderate or Low Huron Sands System

**LEGEND**

Source Protection Area	<b>WHPA Threat Area</b>	<b>IPZ Threat Area</b>
Municipal Boundary	<b>GWVA in Tot Zones - 100m, 2yr</b>	6
County Boundary	10	5.4
Entire WHPA Capture Zone	8	5
Municipal Well	6	
	2 Year Tot Zone	
	Century Heights GUDI Threat Area	
	GWVA	
	7.2	

Map Projection: UTM NAD83 Zone 17

Scale: 0 0.25 0.5 1 Km



Ausable Bayfield & Maitland Valley Source Protection Region

**Map 4.36 Locations Where Pathogen Threats Can Be Significant, Moderate or Low Huron Sands System**



ABCAMVCA GIS Services  
 Copyright © Queen's Printer, 2010  
 This map is for illustrative purposes only, it is not a legal survey.  
 C:\swp\small\_projects\bmross\whpa\_database\_threats\whpa\_path\_huron\_sands\_v10.mxd  
 Date: May 17, 2011  
 Produced By: Darrell Innes ABCA/MVCA DWSP Region