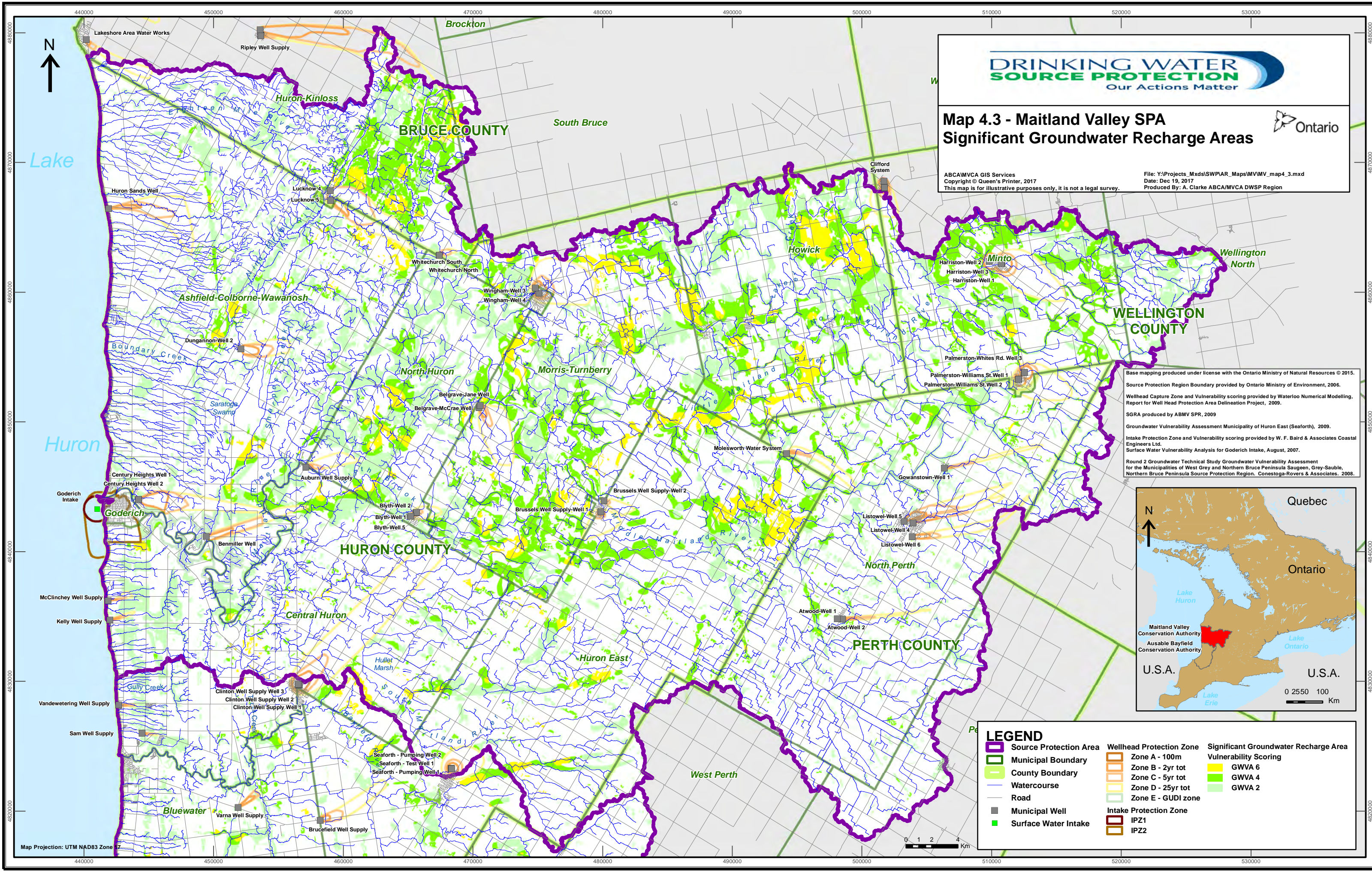


**Map 4.3 - Maitland Valley SPA**  
**Significant Groundwater Recharge Areas**



ABCAMVCA GIS Services  
 Copyright © Queen's Printer, 2017  
 This map is for illustrative purposes only, it is not a legal survey.

File: Y:\Projects\_Mxds\SWPIAR\_Maps\MVMV\_map4.3.mxd  
 Date: Dec 19, 2017  
 Produced By: A. Clarke ABCAMVCA DWSP Region



Base mapping produced under license with the Ontario Ministry of Natural Resources © 2015.  
 Source Protection Region Boundary provided by Ontario Ministry of Environment, 2006.  
 Wellhead Capture Zone and Vulnerability scoring provided by Waterloo Numerical Modelling, Report for Well Head Protection Area Delineation Project, 2009.  
 SGRA produced by ABMV SPR, 2009  
 Groundwater Vulnerability Assessment Municipality of Huron East (Seaforth), 2009.  
 Intake Protection Zone and Vulnerability scoring provided by W. F. Baird & Associates Coastal Engineers Ltd.  
 Surface Water Vulnerability Analysis for Goderich Intake, August, 2007.  
 Round 2 Groundwater Technical Study Groundwater Vulnerability Assessment for the Municipalities of West Grey and Northern Bruce Peninsula Saugen, Grey-Sauble, Northern Bruce Peninsula Source Protection Region. Conestoga-Rovers & Associates, 2008.



**LEGEND**

Source Protection Area	Wellhead Protection Zone	Significant Groundwater Recharge Area
Municipal Boundary	Zone A - 100m	GWVA 6
County Boundary	Zone B - 2yr tot	GWVA 4
Watercourse	Zone C - 5yr tot	GWVA 2
Road	Zone D - 25yr tot	
Municipal Well	Zone E - GUDI zone	
Surface Water Intake	Intake Protection Zone	
	IP21	
	IP22	