

510000



Listowel - Pathogens			
Vulnerability Score	Provincial Table Number (Table Name)		
	Significant	Moderate	Low
10	12 (PW10S)	13 (PW10M)	
8		14 (PW8M)	15 (PW8L)
6			16 (PW6L)

Gowanstown-Well 1

Listowel-Well 5

Listowel-Well 4

Listowel-Well 6

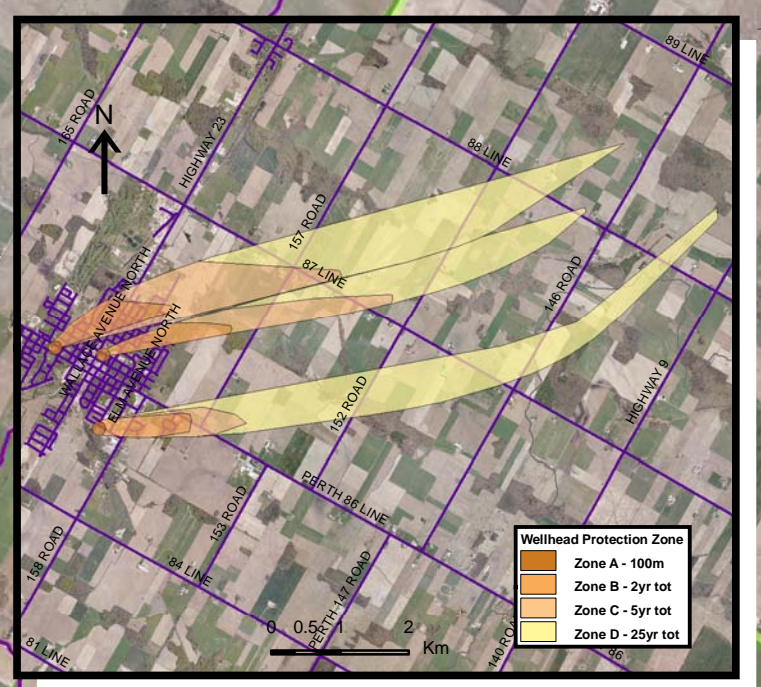
Mapleton

WELLINGTON COUNTY

North Perth

PERTH COUNTY

Base mapping produced under license with the Ontario Ministry of Natural Resources © 2010.  
 Source Protection Region Boundary provided by Ontario Ministry of Environment, 2006.  
 Wellhead Capture Zone and Vulnerability scoring provided by Waterloo Numerical Modelling, Report for Well Head Protection Area Delineation Project, 2009.  
 Photos - First Base Solutions © 2006.



Wellhead Protection Zone	
Orange	Zone A - 100m
Red	Zone B - 2yr tot
Yellow	Zone C - 5yr tot
Light Yellow	Zone D - 25yr tot

0 0.5 1 2 Km

510000

Map 4.218 Locations Where Pathogen Threats Can Be Significant, Moderate or Low Listowel System

### LEGEND

- Source Protection Area
- Municipal Boundary
- County Boundary
- Entire WHPA Capture Zone
- Municipal Well
- WHPA Threat Area GWVA in Tot Zones - 100m, 2yr 10
- 8
- 6
- 2 Year Tot Zone
- Century Heights GUDI Threat Area GWVA 7.2
- IPZ Threat Area GWVA 6
- 5.4
- 5

0 0.25 0.5 1 Km

Map Projection: UTM NAD83 Zone 17



Ausable Bayfield & Maitland Valley Source Protection Region

## Map 4.218 Locations Where Pathogen Threats Can Be Significant, Moderate or Low Listowel System

ABCAMVCA GIS Services  
 Copyright © Queen's Printer, 2010  
 This map is for illustrative purposes only, it is not a legal survey.

C:\swp\small\_projects\bmross\whpa\_database\_threats\whpa\_path\_listowel\_v10.mxd  
 Date: May 17, 2011  
 Produced By: Darrell Innes ABCA/MVCA DWSP Region