

510000

Minto  
WELLINGTON COUNTY

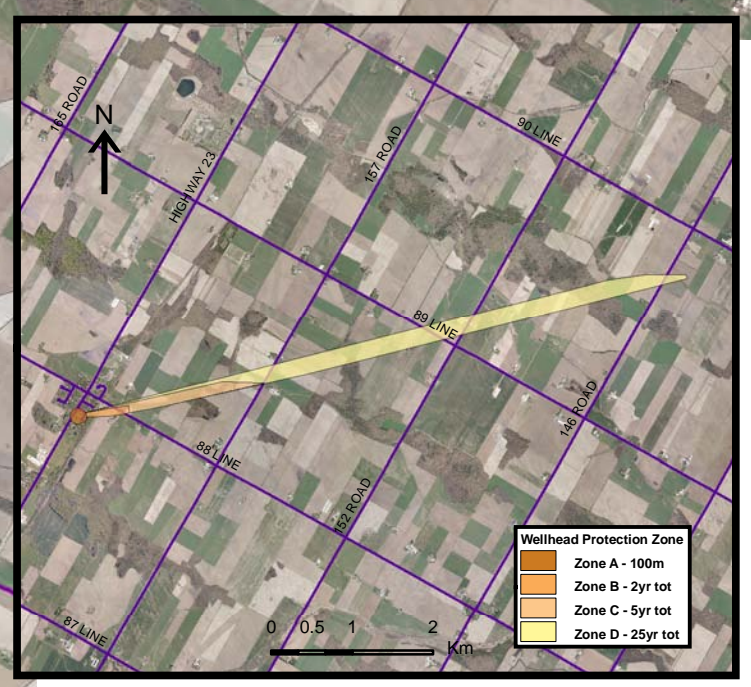


Gowanstown - Pathogens			
Vulnerability Score	Provincial Table Number (Table Name)		
	Significant	Moderate	Low
10	12 (PW10S)	13 (PW10M)	
8			
6			16 (PW6L)

PERTH COUNTY

North Perth

Gowanstown-Well 1



Wellhead Protection Zone	
	Zone A - 100m
	Zone B - 2yr tot
	Zone C - 5yr tot
	Zone D - 25yr tot

Base mapping produced under license with the Ontario Ministry of Natural Resources © 2010.  
 Source Protection Region Boundary provided by Ontario Ministry of Environment, 2006.  
 Wellhead Capture Zone and Vulnerability scoring provided by Waterloo Numerical Modelling, Report for Well Head Protection Area Delineation Project, 2009.  
 Photos - First Base Solutions © 2006.

Mapleton

510000

Map 4.211 Locations Where Pathogen Threats Can Be Significant, Moderate or Low Gowanstown System

**LEGEND**

County Boundary	<b>WHPA Threat Area</b>	<b>IPZ Threat Area</b>
Municipal Boundary	GWVA in Tot Zones - 100m, 2yr	GWVA
Source Protection Area	10	6
Entire WHPA Capture Zone	8	5.4
Municipal Well	6	5
	2 Year Tot Zone	
	Century Heights GUDI Threat Area	
	GWVA	
	7.2	

Map Projection: UTM NAD83 Zone 17



Ausable Bayfield & Maitland Valley Source Protection Region

### Map 4.211 Locations Where Pathogen Threats Can Be Significant, Moderate or Low Gowanstown System

ABCAMVCA GIS Services  
 Copyright © Queen's Printer, 2010  
 This map is for illustrative purposes only, it is not a legal survey.

C:\swp\small\_projects\bmross\whpa\_database\_threats\whpa\_path\_gowanstown\_v10.mxd  
 Date: May 17, 2011  
 Produced By: Darrell Innes ABCA/MVCA DWSP Region