

500000



Atwood - DNAPLs			
Vulnerability Score	Provincial Table Number (Table Name)		
	Significant	Moderate	Low
WHPA A, B, C (<5 year TOT)	9 (DWAS)		
6 (within WHPA D)		10 (DW6M)	11 (DW6L)

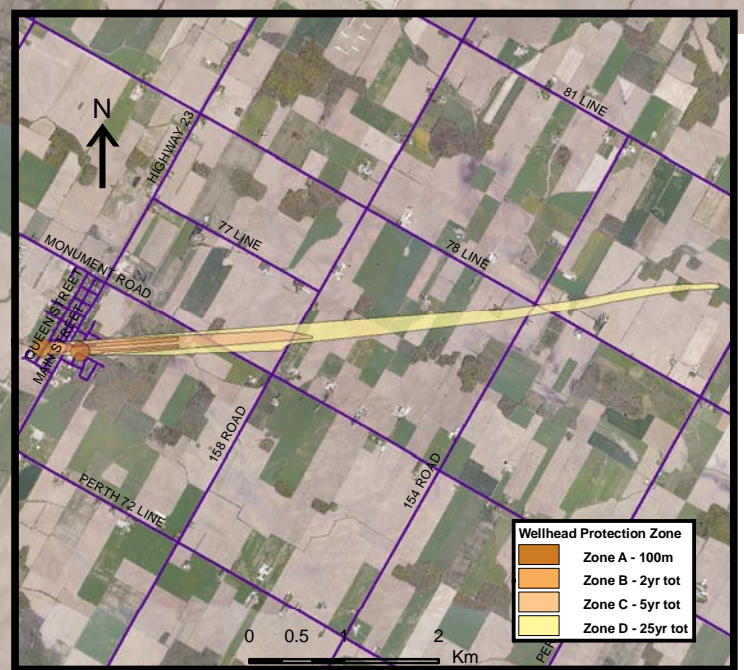
PERTH COUNTY

North Perth

Atwood-Well 1

Atwood-Well 2

Base mapping produced under license with the Ontario Ministry of Natural Resources © 2010.
 Source Protection Region Boundary provided by Ontario Ministry of Environment, 2006.
 Wellhead Capture Zone and Vulnerability scoring provided by Waterloo Numerical Modelling, Report for Well Head Protection Area Delineation Project, 2009.
 Photos - First Base Solutions © 2006.

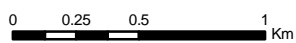


500000

Map 4.205 Locations Where DNAPL Threats Can Be Significant, Moderate or Low Atwood System

LEGEND

- Source Protection Area
- Municipal Boundary
- County Boundary
- Entire WHPA Capture Zone
- Municipal Well
- WHPA Threat Area Tot Zones - 100m, 2yr, 5yr
- 25 year tot with GWVA 6
- 5 Year Tot Zone
- Century Heights GUDI Threat Area GWVA 7.2
- IPZ Threat Area GWVA 6
- 5.4
- 5



Map Projection: UTM NAD83 Zone 17



Ausable Bayfield & Maitland Valley Source Protection Region

Map 4.205 Locations Where DNAPL Threats Can Be Significant, Moderate or Low Atwood System



ABCAMVCA GIS Services
 Copyright © Queen's Printer, 2010
 This map is for illustrative purposes only, it is not a legal survey.

C:\swp\small_projects\lbross\whpa_database_threats\whpa_dnapl_atwood_v10.mxd
 Date: May 17, 2011
 Produced By: Darrell Innes ABCA/MVCA DWSP Region