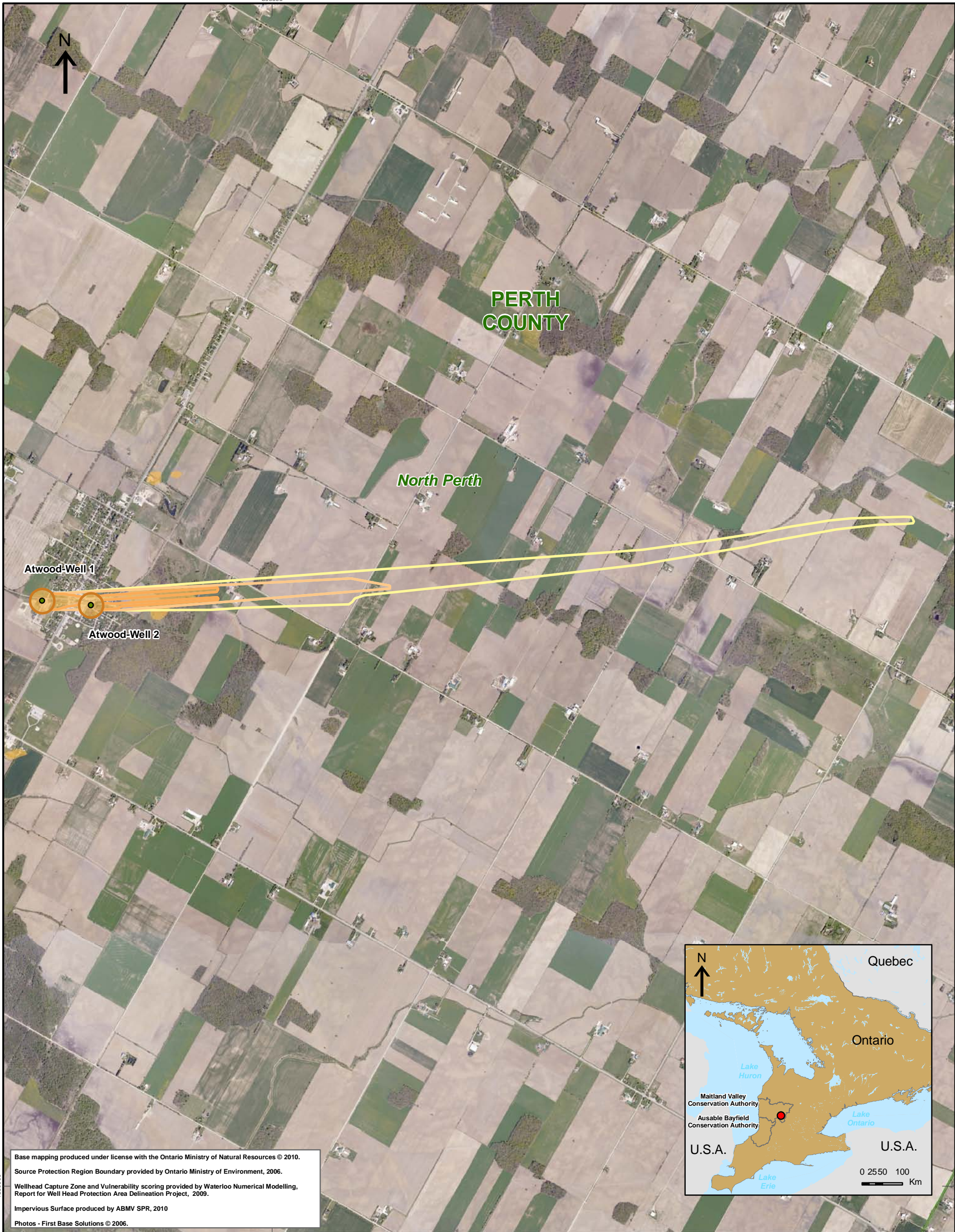


500000



Base mapping produced under license with the Ontario Ministry of Natural Resources © 2010.
 Source Protection Region Boundary provided by Ontario Ministry of Environment, 2006.
 Wellhead Capture Zone and Vulnerability scoring provided by Waterloo Numerical Modelling, Report for Well Head Protection Area Delineation Project, 2009.
 Impervious Surface produced by ABMV SPR, 2010
 Photos - First Base Solutions © 2006.



500000

Map 4.200 Total Impervious Surface Within Vulnerable Areas Atwood System

LEGEND

- | | | |
|------------------------|--------------------------|----------------------------|
| Source Protection Area | Wellhead Protection Zone | Impervious Surface Percent |
| Municipal Boundary | Zone A - 100m | < 1.0 |
| County Boundary | Zone B - 2yr tot | 1.0 - < 8.0 |
| Municipal Well | Zone C - 5yr tot | 8.0 - < 80.0 |
| | Zone D - 25yr tot | > 80.0 |
| | Zone E - GUDI zone | 1km Grid |
| | Intake Protection Zone | |
| | IPZ1 | |
| | IPZ2 | |

0 0.25 0.5 1 Km

Map Projection: UTM NAD83 Zone 17

DRINKING WATER SOURCE PROTECTION
 ACT FOR CLEAN WATER

Ausable Bayfield & Maitland Valley
 Source Protection Region

Map 4.200 Total Impervious Surface Within Vulnerable Areas Atwood System



ABCAMVCA GIS Services
 Copyright © Queen's Printer, 2010
 This map is for illustrative purposes only, it is not a legal survey.

C:\swp\small_projects\cathy\assessment_report_whpa\whpa_imperv_surface_atwood_v9.mxd
 Date: May 17, 2011
 Produced By: Darrell Innes ABCA/MVCA DWSP Region