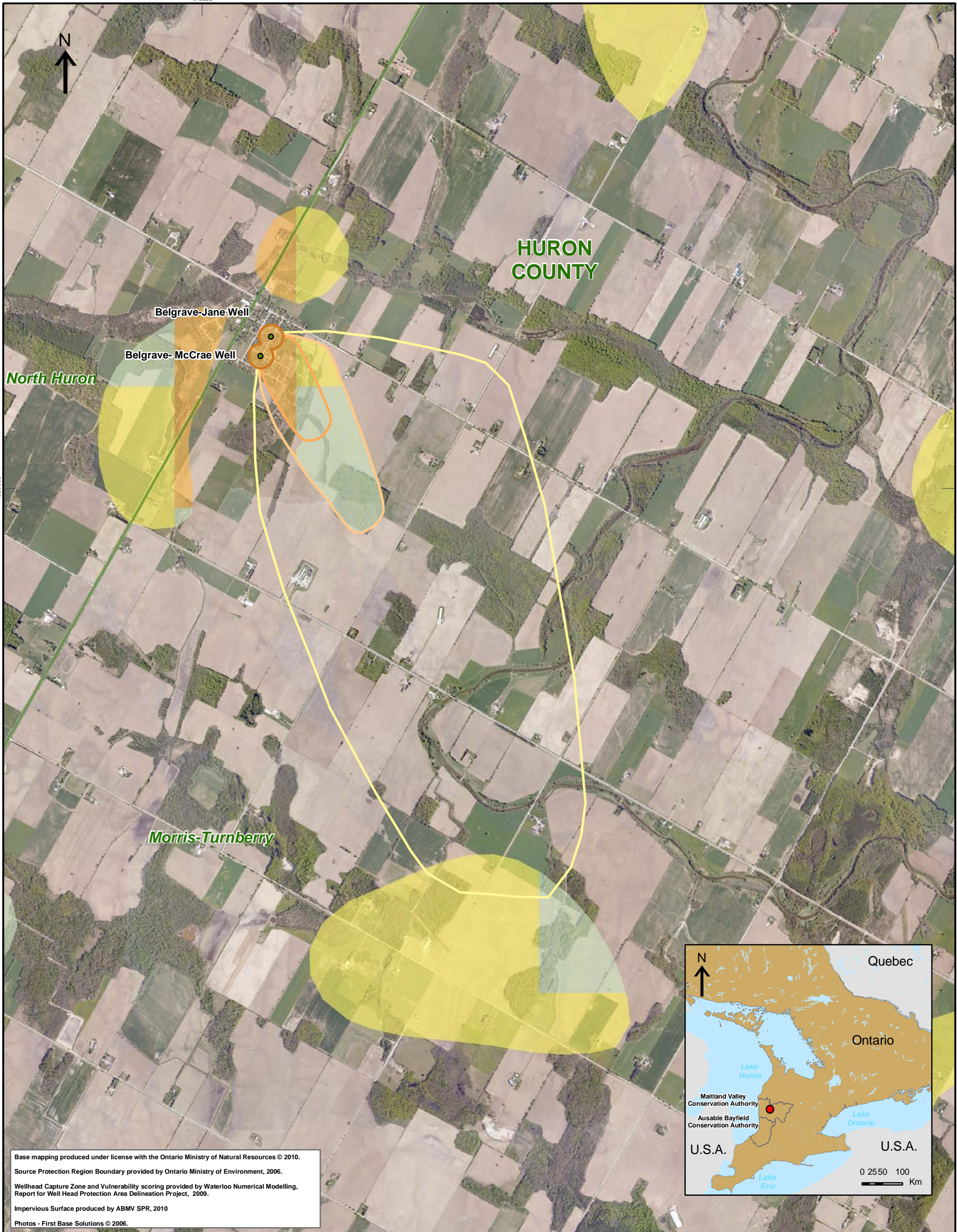


470000



470000

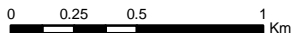
Base mapping produced under license with the Ontario Ministry of Natural Resources © 2010.
Source Protection Region Boundary provided by Ontario Ministry of Environment, 2006.
Wellhead Capture Zone and Vulnerability scoring provided by Waterloo Numerical Modelling, Report for Well Head Protection Area Delineation Project, 2009.
Impervious Surface produced by ABMV SPR, 2010
Photos - First Base Solutions © 2006.



Map 4.167 Total Impervious Surface Within Vulnerable Areas Belgrave System

LEGEND

- | | | |
|------------------------|--------------------------|----------------------------|
| Source Protection Area | Wellhead Protection Zone | Impervious Surface Percent |
| Municipal Boundary | Zone A - 100m | < 1.0 |
| County Boundary | Zone B - 2yr tot | 1.0 - < 8.0 |
| Municipal Well | Zone C - 5yr tot | 8.0 - < 80.0 |
| | Zone D - 25yr tot | > 80.0 |
| | Zone E - GUDI zone | 1km Grid |
| | Intake Protection Zone | |
| | IPZ1 | |
| | IPZ2 | |



Map Projection: UTM NAD83 Zone 17



Ausable Bayfield & Maitland Valley Source Protection Region

Map 4.167 Total Impervious Surface Within Vulnerable Areas Belgrave System



ABCAMVCA GIS Services
Copyright © Queen's Printer, 2010
This map is for illustrative purposes only, it is not a legal survey.

C:\swp\small_projects\cathy\assessment_report_whpa\whpa_imperv_surface_belgrave_v9.mxd
Date: May 17, 2011
Produced By: Darrell Innes ABCA/MVCA DWSP Region