

510000

Harriston - DNAPLs			
Vulnerability Score	Provincial Table Number (Table Name)		
	Significant	Moderate	Low
WHPA A, B, C (<5 year TOT)	9 (DWAS)		
6 (within WHPA D)		10 (DW6M)	11 (DW6L)

WELLINGTON COUNTY

Harriston-Well 2

Harriston-Well 3

Harriston-Well 1

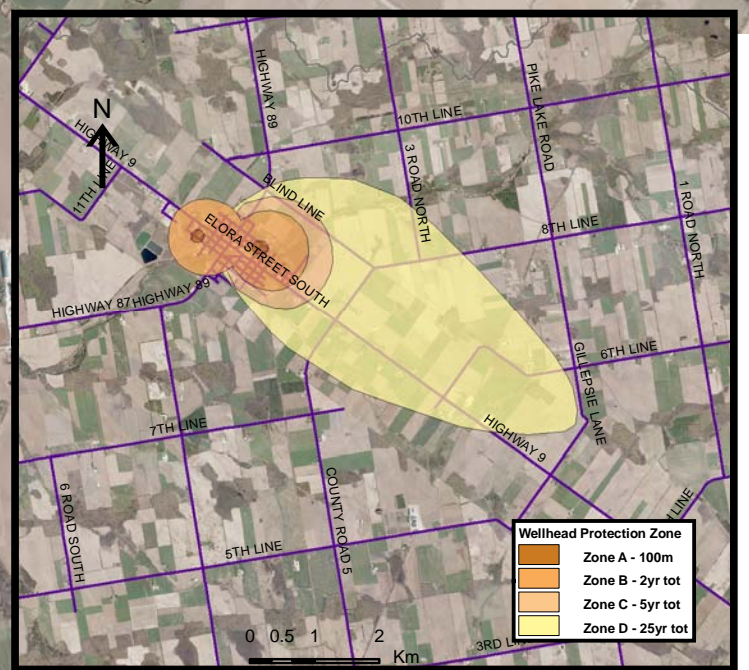
Minto

Base mapping produced under license with the Ontario Ministry of Natural Resources © 2010.

Source Protection Region Boundary provided by Ontario Ministry of Environment, 2006.

Wellhead Capture Zone and Vulnerability scoring provided by Waterloo Numerical Modelling, Report for Well Head Protection Area Delineation Project, 2009.

Photos - First Base Solutions © 2006.



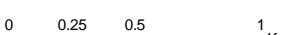
Wellhead Protection Zone	
Orange	Zone A - 100m
Light Orange	Zone B - 2yr tot
Yellow-Orange	Zone C - 5yr tot
Yellow	Zone D - 25yr tot

510000

Map 4.152 Locations Where DNAPL Threats Can Be Significant, Moderate or Low Harriston System

LEGEND

- Source Protection Area
- Municipal Boundary
- County Boundary
- Entire WHPA Capture Zone
- Municipal Well
- WHPA Threat Area
 - Tot Zones - 100m, 2yr, 5yr
 - 25 year tot with GWVA 6
 - 5 Year Tot Zone
 - Century Heights GUDI Threat Area
 - GWVA 7.2
- IPZ Threat Area
 - GWVA 6
 - 5.4
 - 5



Map Projection: UTM NAD83 Zone 17



Ausable Bayfield & Maitland Valley Source Protection Region

Map 4.152 Locations Where DNAPL Threats Can Be Significant, Moderate or Low Harriston System



ABCAMVCA GIS Services Copyright © Queen's Printer, 2010 This map is for illustrative purposes only, it is not a legal survey.

C:\swp\small_projects\bmross\whpa_database_threats\whpa_dnapi_harriston_v10.mxd Date: May 17, 2011 Produced By:Darrell Innes ABCA/MVCA DWSP Region