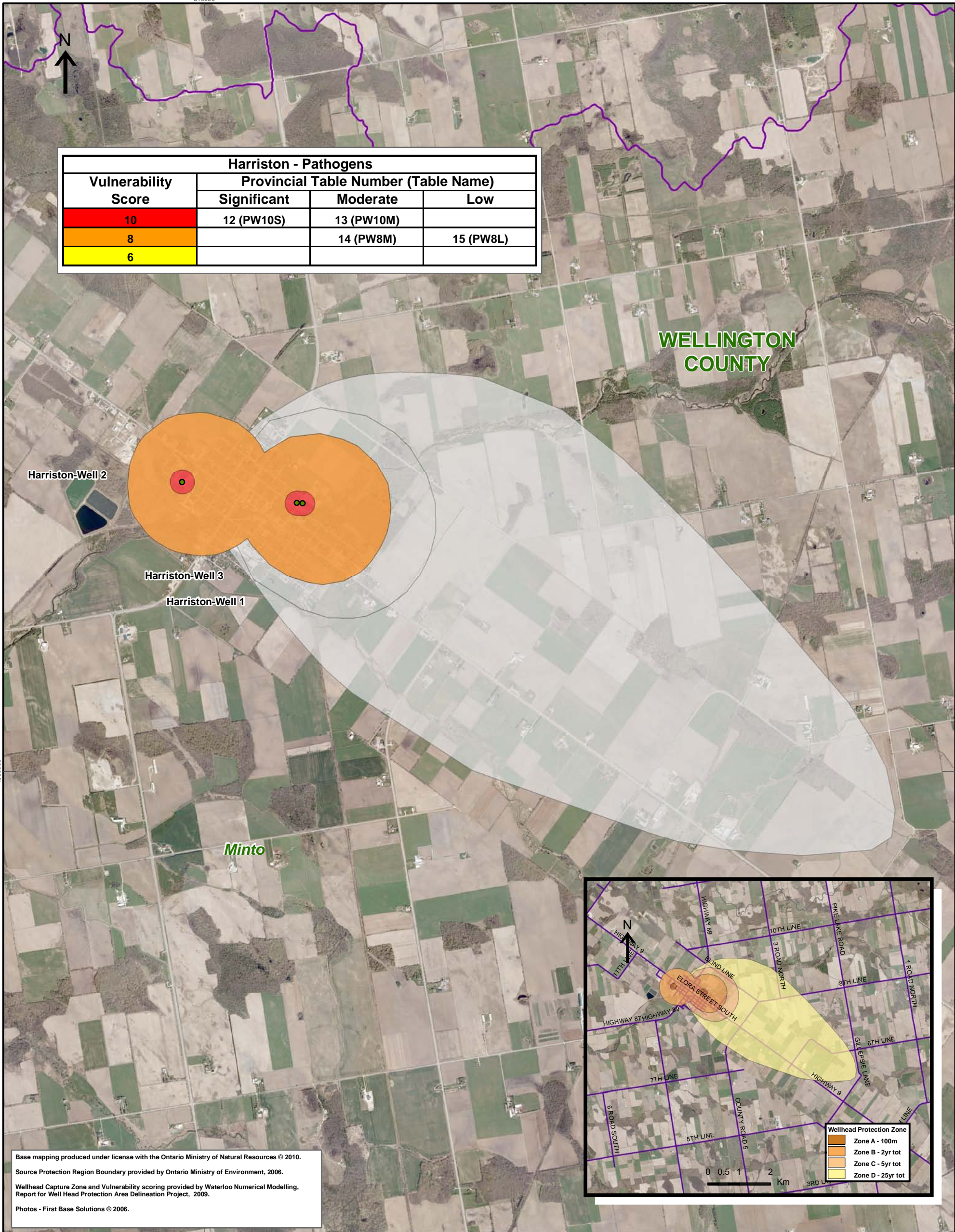


510000



Harriston - Pathogens			
Vulnerability Score	Provincial Table Number (Table Name)		
	Significant	Moderate	Low
10	12 (PW10S)	13 (PW10M)	
8		14 (PW8M)	15 (PW8L)
6			

WELLINGTON COUNTY

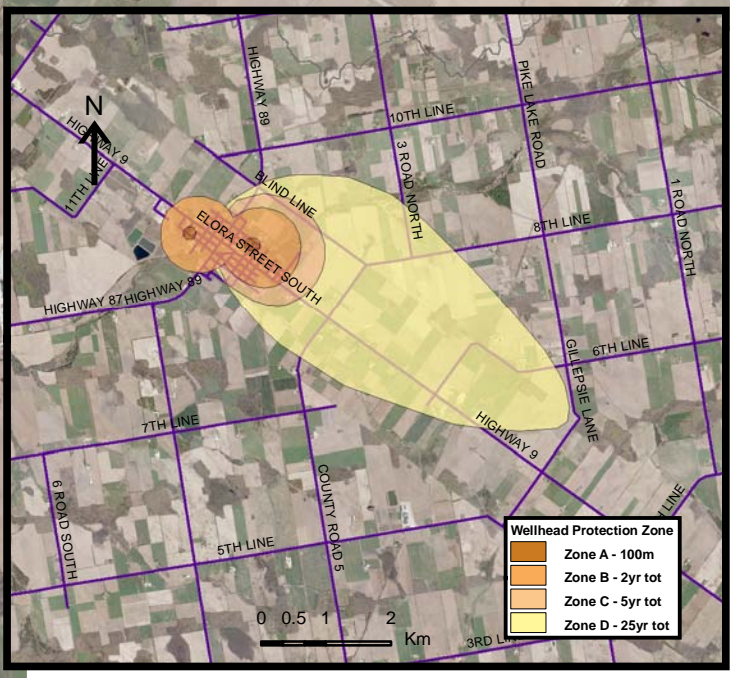
Harriston-Well 2

Harriston-Well 3

Harriston-Well 1

Minto

Base mapping produced under license with the Ontario Ministry of Natural Resources © 2010.
 Source Protection Region Boundary provided by Ontario Ministry of Environment, 2006.
 Wellhead Capture Zone and Vulnerability scoring provided by Waterloo Numerical Modelling, Report for Well Head Protection Area Delineation Project, 2009.
 Photos - First Base Solutions © 2006.



Wellhead Protection Zone	
Orange	Zone A - 100m
Light Orange	Zone B - 2yr tot
Yellow	Zone C - 5yr tot
Light Green	Zone D - 25yr tot

0 0.5 1 2 Km

510000

Map 4.151 Locations Where Pathogen Threats Can Be Significant, Moderate or Low Harriston System

LEGEND

Source Protection Area	WHPA Threat Area	IPZ Threat Area
Municipal Boundary	GWVA in Tot Zones - 100m, 2yr	GWVA
County Boundary	10	6
Entire WHPA Capture Zone	8	5.4
Municipal Well	6	5
	2 Year Tot Zone	
	Century Heights GUDI Threat Area	
	GWVA	
	7.2	

Map Projection: UTM NAD83 Zone 17

0 0.25 0.5 1 Km

DRINKING WATER SOURCE PROTECTION
 ACT FOR CLEAN WATER

Ausable Bayfield & Maitland Valley Source Protection Region

Map 4.151 Locations Where Pathogen Threats Can Be Significant, Moderate or Low Harriston System

ABCAMVCA GIS Services
 Copyright © Queen's Printer, 2010
 This map is for illustrative purposes only, it is not a legal survey.

C:\swp\small_projects\bmross\whpa_database_threats\whpa_path_harriston_v10.mxd
 Date: May 17, 2011
 Produced By: Darrell Innes ABCA/MVCA DWSP Region