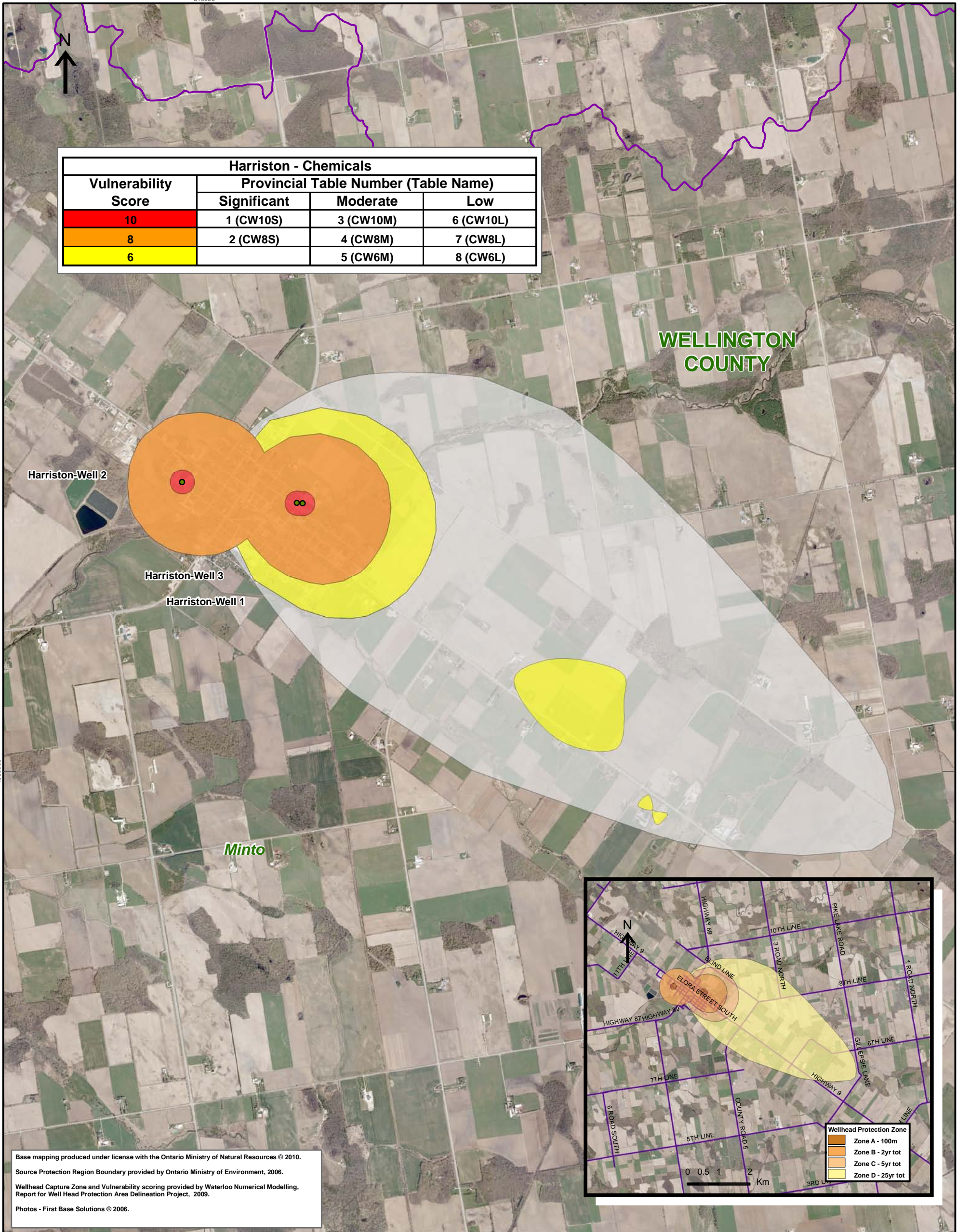


510000



Harriston - Chemicals			
Vulnerability Score	Provincial Table Number (Table Name)		
	Significant	Moderate	Low
10	1 (CW10S)	3 (CW10M)	6 (CW10L)
8	2 (CW8S)	4 (CW8M)	7 (CW8L)
6		5 (CW6M)	8 (CW6L)

WELLINGTON COUNTY

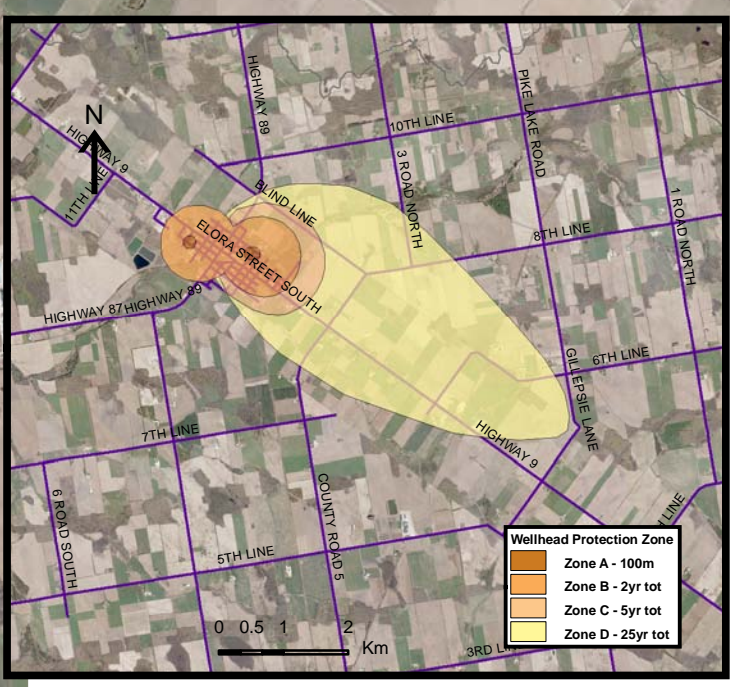
Harriston-Well 2

Harriston-Well 3

Harriston-Well 1

Minto

Base mapping produced under license with the Ontario Ministry of Natural Resources © 2010.
 Source Protection Region Boundary provided by Ontario Ministry of Environment, 2006.
 Wellhead Capture Zone and Vulnerability scoring provided by Waterloo Numerical Modelling, Report for Well Head Protection Area Delineation Project, 2009.
 Photos - First Base Solutions © 2006.



Wellhead Protection Zone
 Zone A - 100m
 Zone B - 2yr tot
 Zone C - 5yr tot
 Zone D - 25yr tot

510000

Map 4.150 Locations Where Chemical Threats Can Be Significant, Moderate or Low Harriston System

LEGEND

Source Protection Area	WHPA Threat Area GWVA	IPZ Threat Area GWVA
Municipal Boundary	10	6
County Boundary	8	5.4
Entire WHPA Capture Zone	6	5
Municipal Well	Century Heights GUDI Threat Area GWVA	
	7.2	

Map Projection: UTM NAD83 Zone 17

0 0.25 0.5 1 Km



Map 4.150 Locations Where Chemical Threats Can Be Significant, Moderate or Low Harriston System

ABCAMVCA GIS Services
 Copyright © Queen's Printer, 2010
 This map is for illustrative purposes only, it is not a legal survey.

C:\swp\small_projects\bmross\whpa_database_threats\whpa_chem_harriston_v10.mxd
 Date: May 17, 2011
 Produced By: Darrell Innes ABCA/MVCA DWSP Region