

500000



BRUCE COUNTY

West Grey

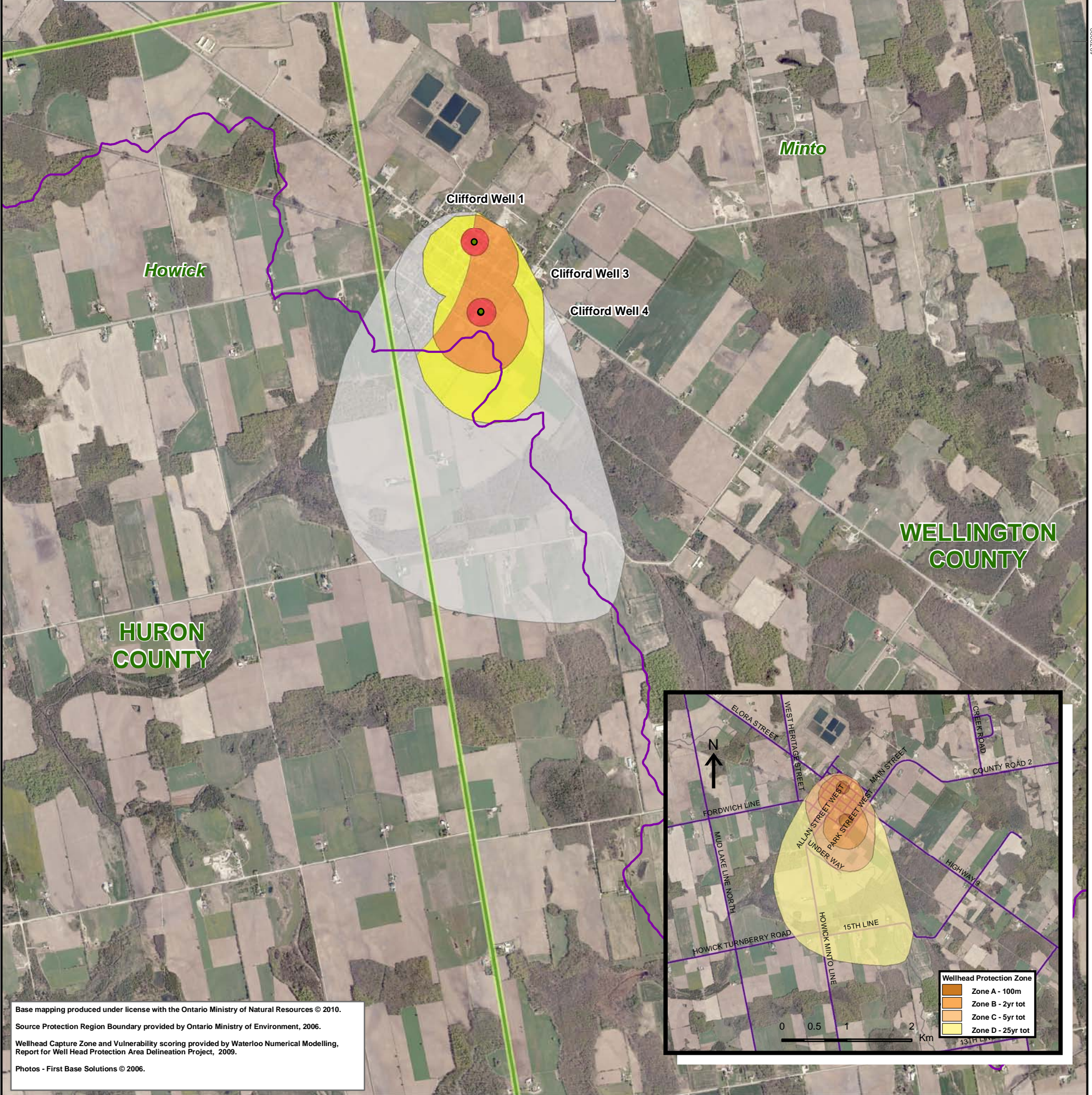
GREY COUNTY

South Bruce

Clifford - Chemicals			
Vulnerability Score	Provincial Table Number (Table Name)		
	Significant	Moderate	Low
10	1 (CW10S)	3 (CW10M)	6 (CW10L)
8	2 (CW8S)	4 (CW8M)	7 (CW8L)
6		5 (CW6M)	8 (CW6L)

000027P

4870000



Howick

Clifford Well 1

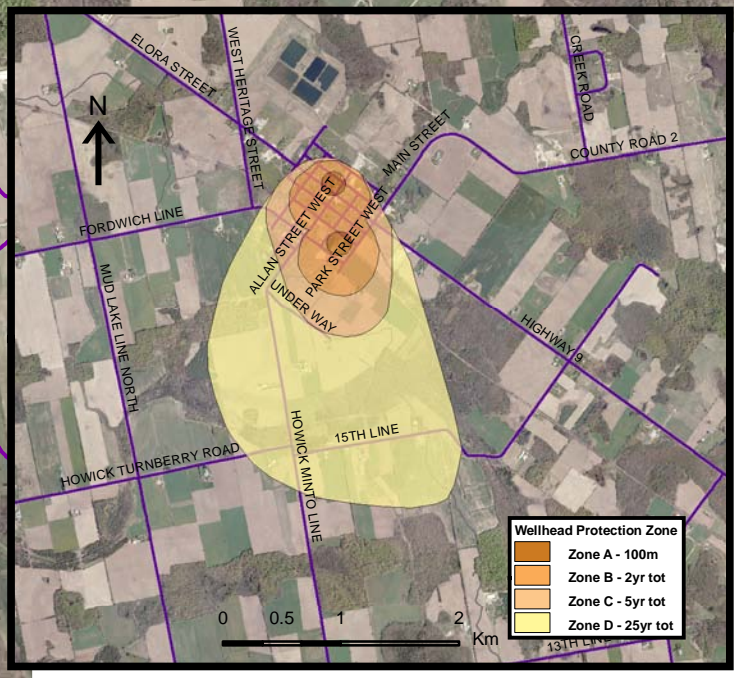
Clifford Well 3

Clifford Well 4

Minto

WELLINGTON COUNTY

HURON COUNTY



Wellhead Protection Zone	
	Zone A - 100m
	Zone B - 2yr tot
	Zone C - 5yr tot
	Zone D - 25yr tot

Base mapping produced under license with the Ontario Ministry of Natural Resources © 2010.
 Source Protection Region Boundary provided by Ontario Ministry of Environment, 2006.
 Wellhead Capture Zone and Vulnerability scoring provided by Waterloo Numerical Modelling, Report for Well Head Protection Area Delineation Project, 2009.
 Photos - First Base Solutions © 2006.

500000

Map 4.143 Locations Where Chemical Threats Can Be Significant, Moderate or Low Clifford System

LEGEND

<ul style="list-style-type: none"> Source Protection Area Municipal Boundary County Boundary Entire WHPA Capture Zone ● Municipal Well 	<p>WHPA Threat Area GWVA</p> <ul style="list-style-type: none"> 10 8 6 <p>Century Heights GUDI Threat Area GWVA</p> <ul style="list-style-type: none"> 7.2 	<p>IPZ Threat Area GWVA</p> <ul style="list-style-type: none"> 6 5.4 5
--	--	---

Map Projection: UTM NAD83 Zone 17

0 0.25 0.5 1 Km

DRINKING WATER SOURCE PROTECTION
ACT FOR CLEAN WATER

Ausable Bayfield & Maitland Valley Source Protection Region

Map 4.143 Locations Where Chemical Threats Can Be Significant, Moderate or Low Clifford System

ABCAMVCA GIS Services
 Copyright © Queen's Printer, 2010
 This map is for illustrative purposes only, it is not a legal survey.

C:\swp\small_projects\bmross\whpa_database_threats\whpa_chem_clifford_v10.mxd
 Date: May 17, 2011
 Produced By: Darrell Innes ABCA/MVCA DWSP Region