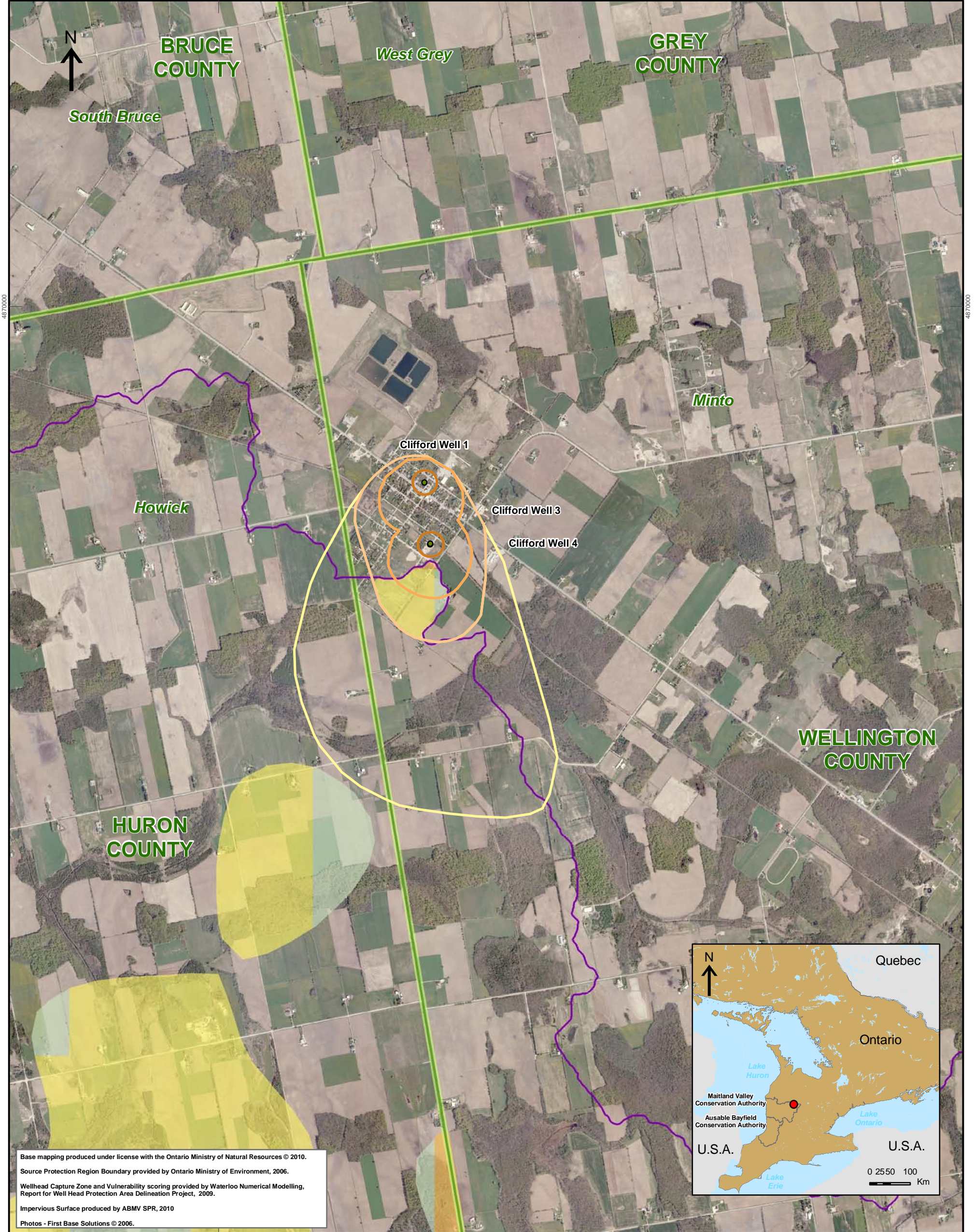


500000



000028

4870000

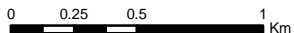
Base mapping produced under license with the Ontario Ministry of Natural Resources © 2010.  
 Source Protection Region Boundary provided by Ontario Ministry of Environment, 2006.  
 Wellhead Capture Zone and Vulnerability scoring provided by Waterloo Numerical Modelling, Report for Well Head Protection Area Delineation Project, 2009.  
 Impervious Surface produced by ABMV SPR, 2010  
 Photos - First Base Solutions © 2006.

500000

Map 4.140 Total Impervious Surface Within Vulnerable Areas Clifford System

### LEGEND

- |                        |                          |                            |
|------------------------|--------------------------|----------------------------|
| Source Protection Area | Wellhead Protection Zone | Impervious Surface Percent |
| Municipal Boundary     | Zone A - 100m            | < 1.0                      |
| County Boundary        | Zone B - 2yr tot         | 1.0 - < 8.0                |
| Municipal Well         | Zone C - 5yr tot         | 8.0 - < 80.0               |
|                        | Zone D - 25yr tot        | > 80.0                     |
|                        | Zone E - GUDI zone       | 1km Grid                   |
|                        | Intake Protection Zone   |                            |
|                        | IPZ1                     |                            |
|                        | IPZ2                     |                            |



Map Projection: UTM NAD83 Zone 17



Ausable Bayfield & Maitland Valley Source Protection Region

## Map 4.140 Total Impervious Surface Within Vulnerable Areas Clifford System



ABCAMVCA GIS Services  
 Copyright © Queen's Printer, 2010  
 This map is for illustrative purposes only, it is not a legal survey.

C:\swp\small\_projects\cathy\assessment\_report\_whpa\whpa\_imperv\_surface\_clifford\_v9.mxd  
 Date: May 17, 2011  
 Produced By: Darrell Innes ABCA/MVCA DWSP Region