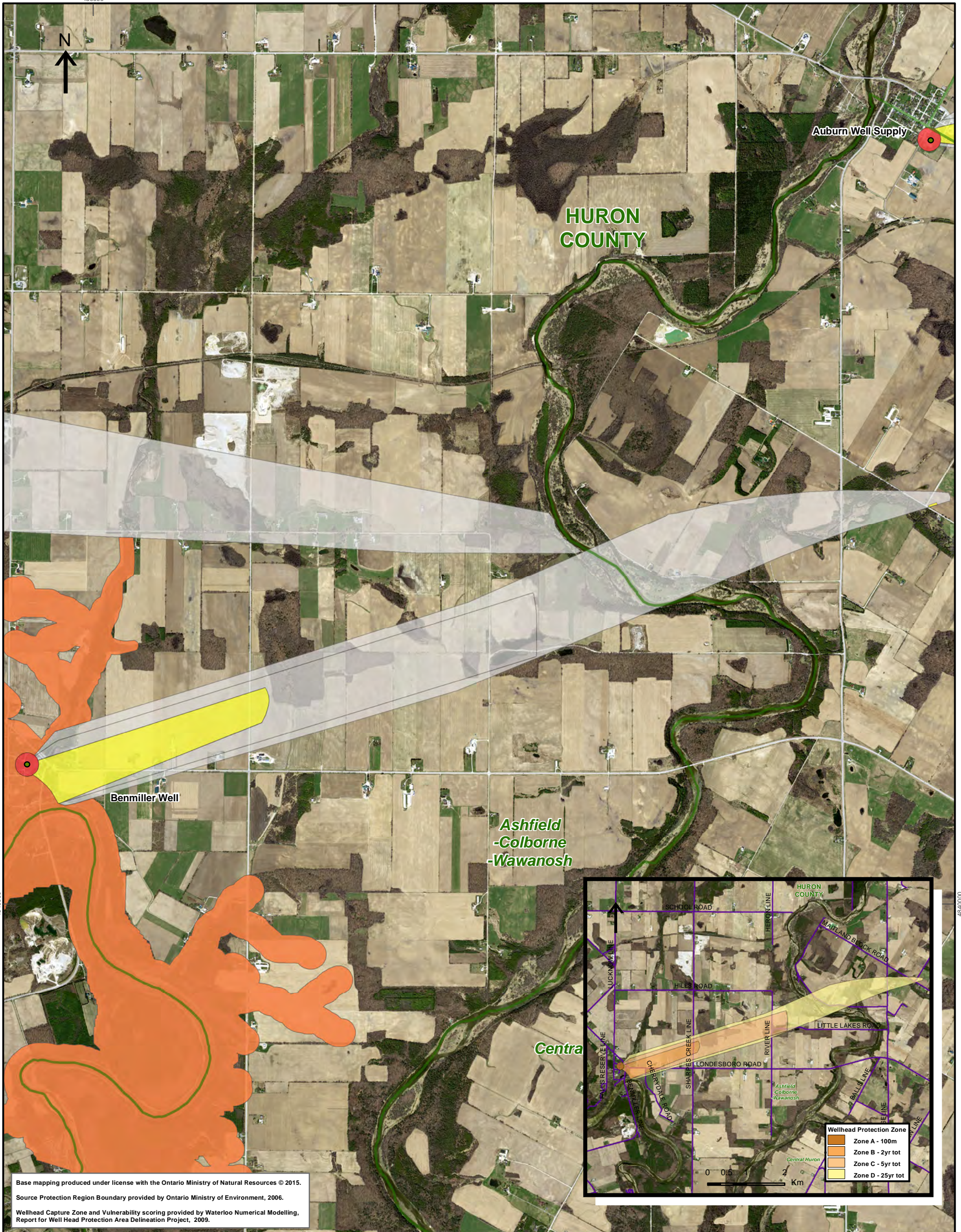


450000



Base mapping produced under license with the Ontario Ministry of Natural Resources © 2015.  
 Source Protection Region Boundary provided by Ontario Ministry of Environment, 2006.  
 Wellhead Capture Zone and Vulnerability scoring provided by Waterloo Numerical Modelling, Report for Well Head Protection Area Delineation Project, 2009.

Map 4.14 Locations Where Chemical Threats Can Be Significant, Moderate or Low Benmiller System

**LEGEND**

- Source Protection Area
  - Municipal Boundary
  - County Boundary
  - Entire WHPA Capture Zone
  - Municipal Well
- |  |                             |
|--|-----------------------------|
| <b>WHPA Threat Area GWVA</b>                 | <b>IPZ Threat Area GWVA</b> |
| 10   | 6                           |
| 8  | 5.4                         |
| 6  | 5                           |
| <b>Century Heights GUDI Threat Area GWVA</b> |                             |
| 7.2  |                             |

0 0.25 0.5 1 Km

Map Projection: UTM NAD83 Zone 17



Ausable Bayfield & Maitland Valley Source Protection Region

**Map 4.14 Locations Where Chemical Threats Can Be Significant, Moderate or Low Benmiller System**



ABCAMVCA GIS Services  
 Copyright © Queen's Printer, 2017  
 This map is for illustrative purposes only, it is not a legal survey.

File: Y:\Projects\_Mxds\SWPIAR\_Maps\MVIBenmiller\_Chemical.mxd  
 Date: Dec 19, 2017  
 Produced By: A. Clarke ABCAMVCA DWSP Region