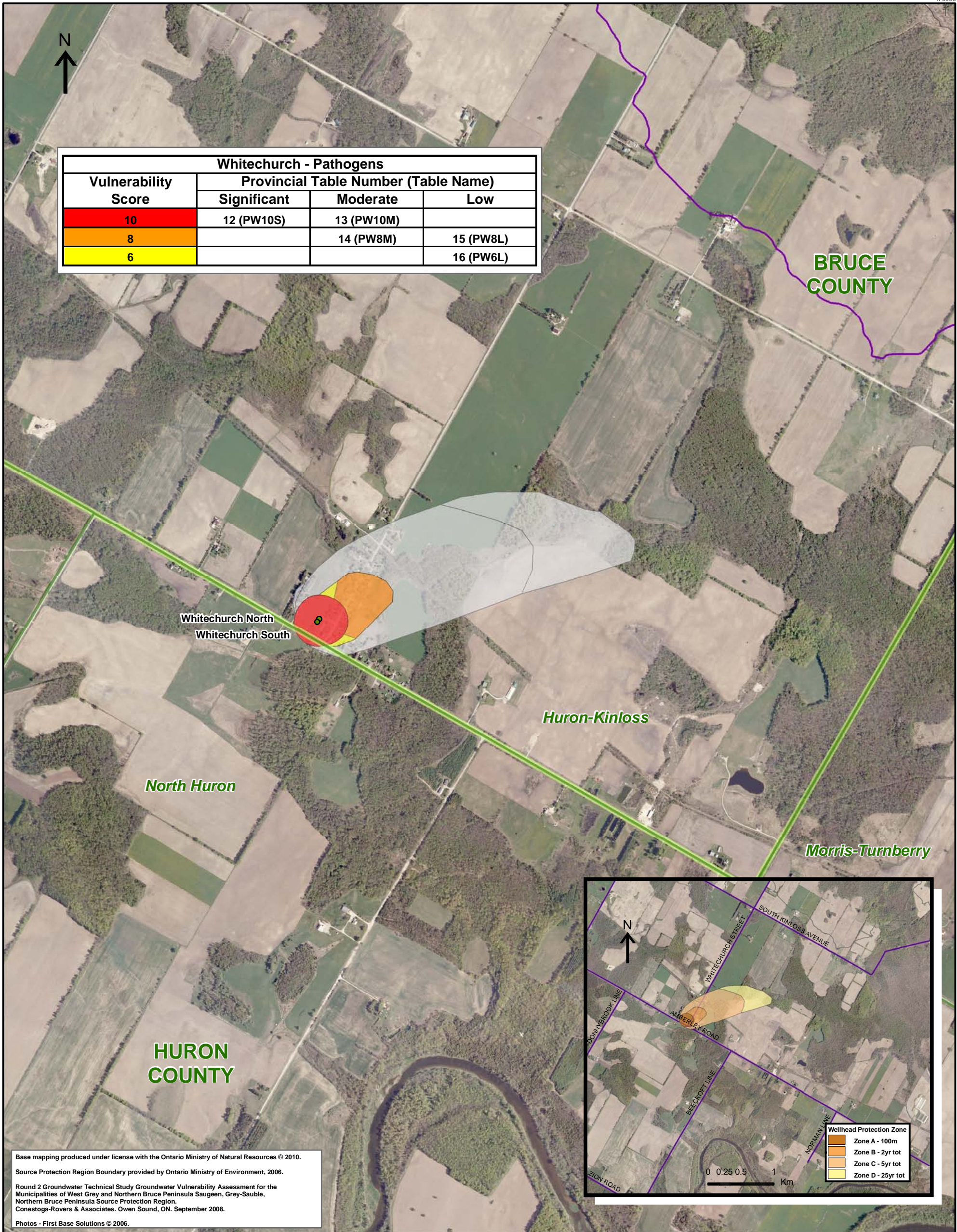


Whitechurch - Pathogens			
Vulnerability Score	Provincial Table Number (Table Name)		
	Significant	Moderate	Low
10	12 (PW10S)	13 (PW10M)	
8		14 (PW8M)	15 (PW8L)
6			16 (PW6L)



Base mapping produced under license with the Ontario Ministry of Natural Resources © 2010.  
 Source Protection Region Boundary provided by Ontario Ministry of Environment, 2006.  
 Round 2 Groundwater Technical Study Groundwater Vulnerability Assessment for the Municipalities of West Grey and Northern Bruce Peninsula Saugeen, Grey-Sauble, Northern Bruce Peninsula Source Protection Region.  
 Conestoga-Rovers & Associates, Owen Sound, ON, September 2008.  
 Photos - First Base Solutions © 2006.

**LEGEND**

- Source Protection Area
- Municipal Boundary
- County Boundary
- Entire WHPA Capture Zone
- Municipal Well

**WHPA Threat Area**  
 GWVA in Tot Zones - 100m, 2yr

- 10
- 8
- 6

2 Year Tot Zone  
 Century Heights GUDI Threat Area  
 GWVA

- 7.2

**IPZ Threat Area**  
 GWVA

- 6
- 5.4
- 5

Map Projection: UTM NAD83 Zone 17

0 0.125 0.25 0.5 Km

**DRINKING WATER SOURCE PROTECTION**  
 ACT FOR CLEAN WATER

Ausable Bayfield & Maitland Valley Source Protection Region

**Map 4.130 Locations Where Pathogen Threats Can Be Significant, Moderate or Low Whitechurch System**

Ontario

ABCAMVCA GIS Services  
 Copyright © Queen's Printer, 2010  
 This map is for illustrative purposes only, it is not a legal survey.

C:\swp\small\_projects\bmross\whpa\_database\_threats\whpa\_path\_whitechurch\_v10.mxd  
 Date: May 17, 2011  
 Produced By: Darrell Innes ABCA/MVCA DWSP Region