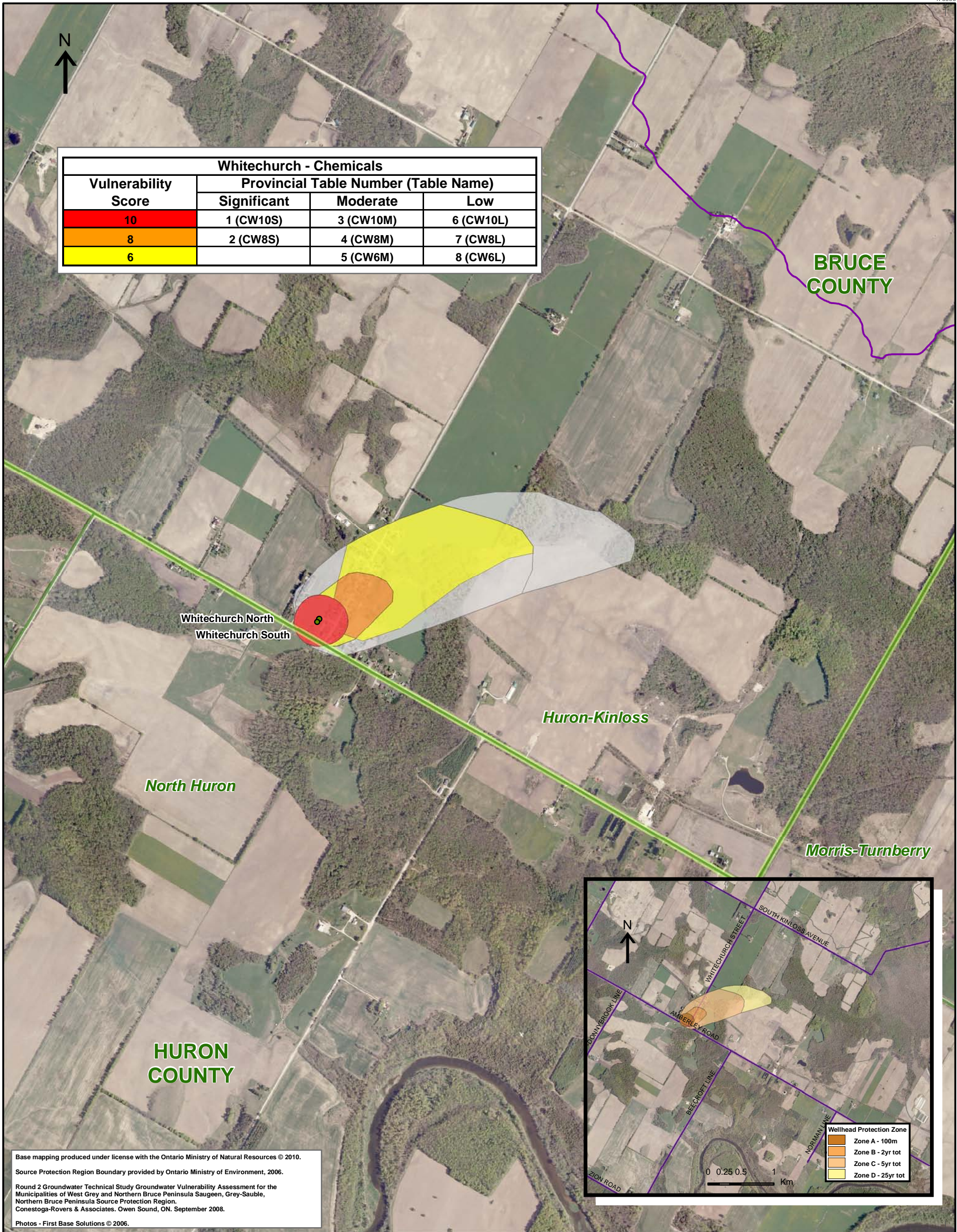


Whitechurch - Chemicals			
Vulnerability Score	Provincial Table Number (Table Name)		
	Significant	Moderate	Low
10	1 (CW10S)	3 (CW10M)	6 (CW10L)
8	2 (CW8S)	4 (CW8M)	7 (CW8L)
6		5 (CW6M)	8 (CW6L)



Base mapping produced under license with the Ontario Ministry of Natural Resources © 2010.  
 Source Protection Region Boundary provided by Ontario Ministry of Environment, 2006.  
 Round 2 Groundwater Technical Study Groundwater Vulnerability Assessment for the Municipalities of West Grey and Northern Bruce Peninsula Saugeen, Grey-Sauble, Northern Bruce Peninsula Source Protection Region.  
 Conestoga-Rovers & Associates, Owen Sound, ON, September 2008.  
 Photos - First Base Solutions © 2006.

Map 4.129 Locations Where Chemical Threats Can Be Significant, Moderate or Low Whitechurch System

**LEGEND**

- Source Protection Area
- Municipal Boundary
- County Boundary
- Entire WHPA Capture Zone
- Municipal Well
- WHPA Threat Area GWVA**
- 10
- 8
- 6
- Century Heights GUDI Threat Area GWVA**
- 7.2
- IPZ Threat Area GWVA**
- 6
- 5.4
- 5

0 0.125 0.25 0.5 Km



**Map 4.129 Locations Where Chemical Threats Can Be Significant, Moderate or Low Whitechurch System**

ABCAMVCA GIS Services  
 Copyright © Queen's Printer, 2010  
 This map is for illustrative purposes only, it is not a legal survey.

C:\swp\small\_projects\bmross\whpa\_database\_threats\whpa\_chem\_whitechurch\_v10.mxd  
 Date: May 17, 2011  
 Produced By: Darrell Innes ABCA/MVCA DWSP Region