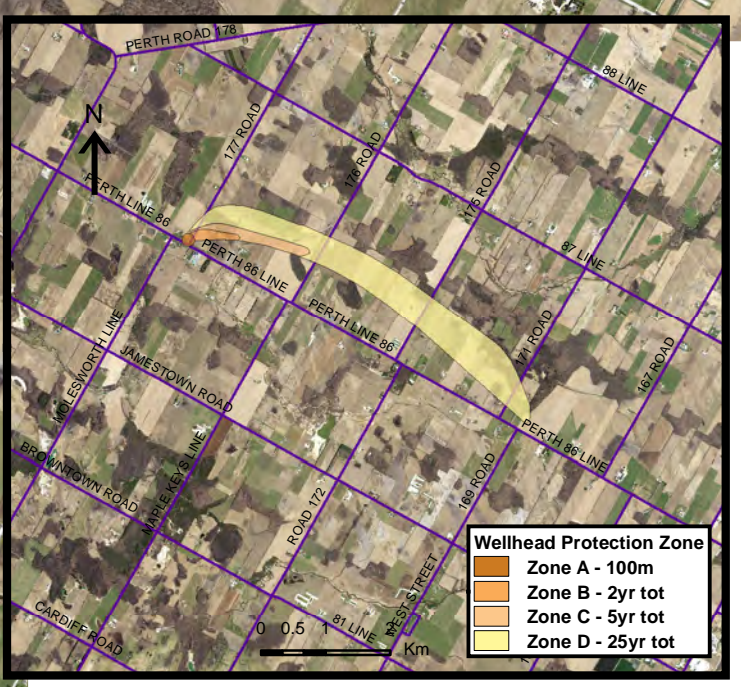




Base mapping produced under license with the Ontario Ministry of Natural Resources © 2015.
 Source Protection Region Boundary provided by Ontario Ministry of Environment, 2006.
 Wellhead Capture Zone and Vulnerability scoring provided by Waterloo Numerical Modelling, Report for Well Head Protection Area Delineation Project, 2009.



LEGEND

Source Protection Area	WHPA Threat Area GWVA	IPZ Threat Area GWVA
Municipal Boundary	10	6
County Boundary	8	5.4
Entire WHPA Capture Zone	6	5
Municipal Well	Century Heights GUDI Threat Area GWVA	
	7.2	

Map 4.109 Locations Where Chemical Threats Can Be Significant, Moderate or Low Molesworth System

Map Projection: UTM NAD83 Zone 17

0 0.25 0.5 1 Km

DRINKING WATER SOURCE PROTECTION
 ACT FOR CLEAN WATER

Ausable Bayfield & Maitland Valley Source Protection Region

Map 4.109 Locations Where Chemical Threats Can Be Significant, Moderate or Low Molesworth System

ABCAMVCA GIS Services
 Copyright © Queen's Printer, 2017
 This map is for illustrative purposes only, it is not a legal survey.

File: Y:\Projects_Mxds\SWPIAR_Maps\MVMolesworth_Chemical.mxd
 Date: Dec 19, 2017
 Produced By: A. Clarke ABCA/MVCA DWSP Region

Ontario