

480000



Brussels - DNAPLs			
Vulnerability Score	Provincial Table Number (Table Name)		
	Significant	Moderate	Low
WHPA A, B, C (<5 year TOT)	9 (DWAS)		
6 (within WHPA D)		10 (DW6M)	11 (DW6L)

Huron East

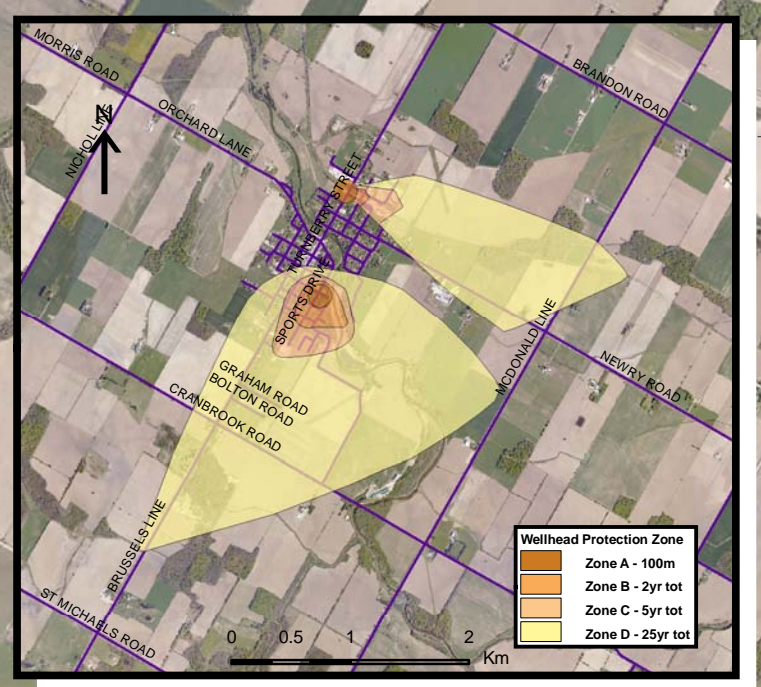
Brussels Well Supply-Well 2

Brussels Well Supply-Well 1

HURON COUNTY

Morris-Turnberry

Base mapping produced under license with the Ontario Ministry of Natural Resources © 2010.
 Source Protection Region Boundary provided by Ontario Ministry of Environment, 2006.
 Wellhead Capture Zone and Vulnerability scoring provided by Waterloo Numerical Modelling, Report for Well Head Protection Area Delineation Project, 2009.
 Photos - First Base Solutions © 2006.



Wellhead Protection Zone	
Orange	Zone A - 100m
Yellow	Zone B - 2yr tot
Light Green	Zone C - 5yr tot
Lightest Green	Zone D - 25yr tot

Map 4.104 Locations Where DNAPL Threats Can Be Significant, Moderate or Low Brussels System

LEGEND

Source Protection Area	WHPA Threat Area	IPZ Threat Area GWVA
Municipal Boundary	Tot Zones - 100m, 2yr, 5yr	6
County Boundary	25 year tot with GWVA 6	5.4
Entire WHPA Capture Zone	5 Year Tot Zone	5
Municipal Well	Century Heights GUDI Threat Area GWVA	
	7.2	

Map Projection: UTM NAD83 Zone 17

0 0.25 0.5 1 Km



Ausable Bayfield & Maitland Valley Source Protection Region

Map 4.104 Locations Where DNAPL Threats Can Be Significant, Moderate or Low Brussels System



ABCAMVCA GIS Services
 Copyright © Queen's Printer, 2010
 This map is for illustrative purposes only, it is not a legal survey.
 C:\swp\small_projects\bmross\whpa_database_threats\whpa_dnapi_brussels_v10.mxd
 Date: May 17, 2011
 Produced By: Darrell Innes ABCA/MVCA DWSP Region