

480000



| Brussels - Pathogens | | | |
|----------------------|--------------------------------------|------------|-----|
| Vulnerability Score | Provincial Table Number (Table Name) | | |
| | Significant | Moderate | Low |
| 10 | 12 (PW10S) | 13 (PW10M) | |
| 8 | | | |
| 6 | | | |

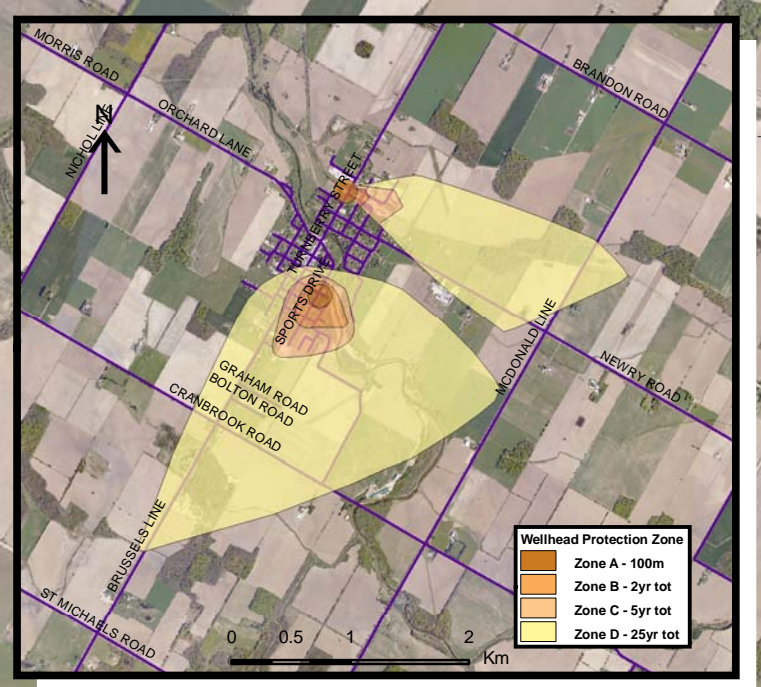
Huron East

Brussels Well Supply-Well 2

Brussels Well Supply-Well 1

HURON COUNTY

Morris-Turnberry



Base mapping produced under license with the Ontario Ministry of Natural Resources © 2010.
 Source Protection Region Boundary provided by Ontario Ministry of Environment, 2006.
 Wellhead Capture Zone and Vulnerability scoring provided by Waterloo Numerical Modelling, Report for Well Head Protection Area Delineation Project, 2009.
 Photos - First Base Solutions © 2006.

480000

Map 4.103 Locations Where Pathogen Threats Can Be Significant, Moderate or Low Brussels System

LEGEND

| | | |
|--------------------------|--------------------------------------|------------------------|
| Source Protection Area | WHPA Threat Area | IPZ Threat Area |
| Municipal Boundary | GWVA in Tot Zones - 100m, 2yr | 6 |
| County Boundary | 10 | 5.4 |
| Entire WHPA Capture Zone | 8 | 5 |
| Municipal Well | 6 | |
| | 2 Year Tot Zone | |
| | Century Heights GUDI Threat Area | |
| | GWVA | |
| | 7.2 | |

Map Projection: UTM NAD83 Zone 17

0 0.25 0.5 1 Km



Map 4.103 Locations Where Pathogen Threats Can Be Significant, Moderate or Low Brussels System

ABCAMVCA GIS Services
 Copyright © Queen's Printer, 2010
 This map is for illustrative purposes only, it is not a legal survey.

C:\swp\small_projects\bmross\whpa_database_threats\whpa_path_brussels_v10.mxd
 Date: May 17, 2011
 Produced By: Darrell Innes ABCA/MVCA DWSP Region