

480000



Brussels - Chemicals			
Vulnerability Score	Provincial Table Number (Table Name)		
	Significant	Moderate	Low
10	1 (CW10S)	3 (CW10M)	6 (CW10L)
8	2 (CW8S)	4 (CW8M)	7 (CW8L)
6		5 (CW6M)	8 (CW6L)

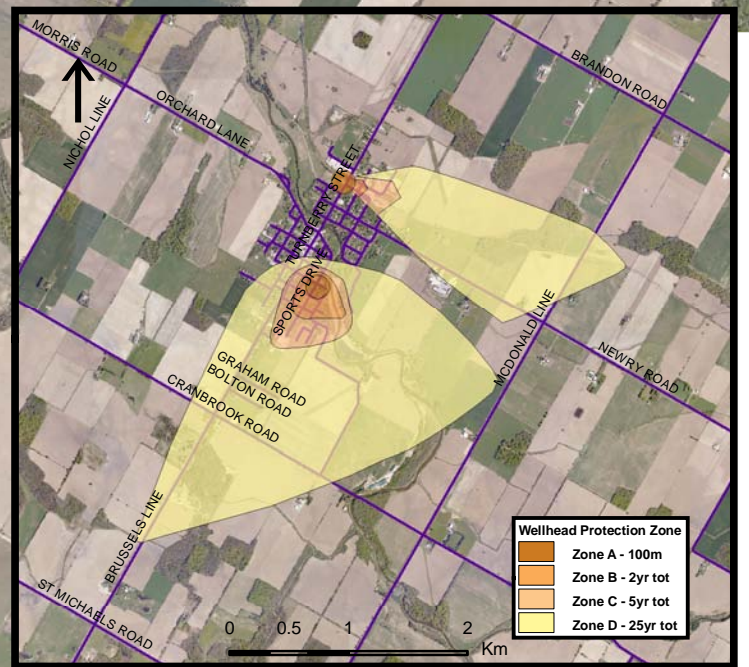
Huron East

Brussels Well Supply-Well 2

Brussels Well Supply-Well 1

HURON COUNTY

Morris-Turnberry



Base mapping produced under license with the Ontario Ministry of Natural Resources © 2010.

Source Protection Region Boundary provided by Ontario Ministry of Environment, 2006.

Wellhead Capture Zone and Vulnerability scoring provided by Waterloo Numerical Modelling, Report for Well Head Protection Area Delineation Project, 2009.

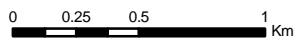
Photos - First Base Solutions © 2006.

480000

Map 4.102 Locations Where Chemical Threats Can Be Significant, Moderate or Low Brussels System

LEGEND

- Source Protection Area
- Municipal Boundary
- County Boundary
- Entire WHPA Capture Zone
- Municipal Well
- WHPA Threat Area GWVA**
- 10
- 8
- 6
- Century Heights GUDI Threat Area GWVA**
- 7.2
- IPZ Threat Area GWVA**
- 6
- 5.4
- 5



Map Projection: UTM NAD83 Zone 17



Ausable Bayfield & Maitland Valley Source Protection Region

Map 4.102 Locations Where Chemical Threats Can Be Significant, Moderate or Low Brussels System

ABCAMVCA GIS Services
Copyright © Queen's Printer, 2010
This map is for illustrative purposes only, it is not a legal survey.

C:\swp\small_projects\bmross\whpa_database_threats\whpa_chem_brussels_v10.mxd
Date: May 17, 2011
Produced By: Darrell Innes ABCA/MVCA DWSP Region