

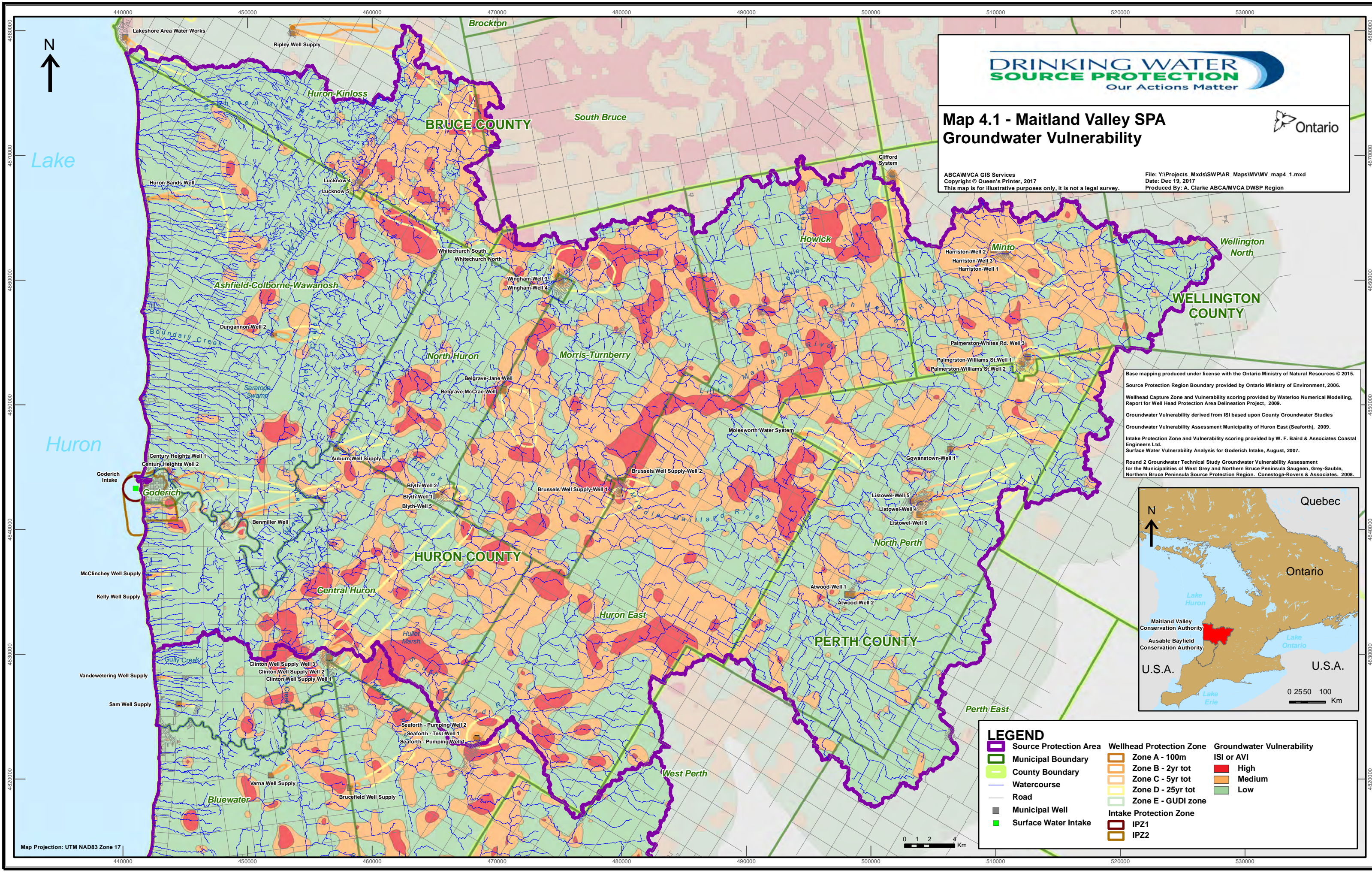


Map 4.1 - Maitland Valley SPA Groundwater Vulnerability



ABCAMVCA GIS Services
Copyright © Queen's Printer, 2017
This map is for illustrative purposes only, it is not a legal survey.

File: Y:\Projects_Mxds\SWPAR_Maps\MVMV_map4_1.mxd
Date: Dec 19, 2017
Produced By: A. Clarke ABCAMVCA DWSP Region

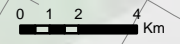


Base mapping produced under license with the Ontario Ministry of Natural Resources © 2015.
Source Protection Region Boundary provided by Ontario Ministry of Environment, 2006.
Wellhead Capture Zone and Vulnerability scoring provided by Waterloo Numerical Modelling, Report for Well Head Protection Area Delineation Project, 2009.
Groundwater Vulnerability derived from ISI based upon County Groundwater Studies
Groundwater Vulnerability Assessment Municipality of Huron East (Seaforth), 2009.
Intake Protection Zone and Vulnerability scoring provided by W. F. Baird & Associates Coastal Engineers Ltd.
Surface Water Vulnerability Analysis for Goderich Intake, August, 2007.
Round 2 Groundwater Technical Study Groundwater Vulnerability Assessment for the Municipalities of West Grey and Northern Bruce Peninsula Sauguen, Gray-Sauble, Northern Bruce Peninsula Source Protection Region. Conestoga-Rovers & Associates, 2008.



LEGEND

Source Protection Area	Wellhead Protection Zone Zone A - 100m	Groundwater Vulnerability ISI or AVI High
Municipal Boundary	Zone B - 2yr tot	Medium
County Boundary	Zone C - 5yr tot	Low
Watercourse	Zone D - 25yr tot	
Road	Zone E - GUDI zone	
Municipal Well	Intake Protection Zone IPZ1	
Surface Water Intake	IPZ2	



Map Projection: UTM NAD83 Zone 17