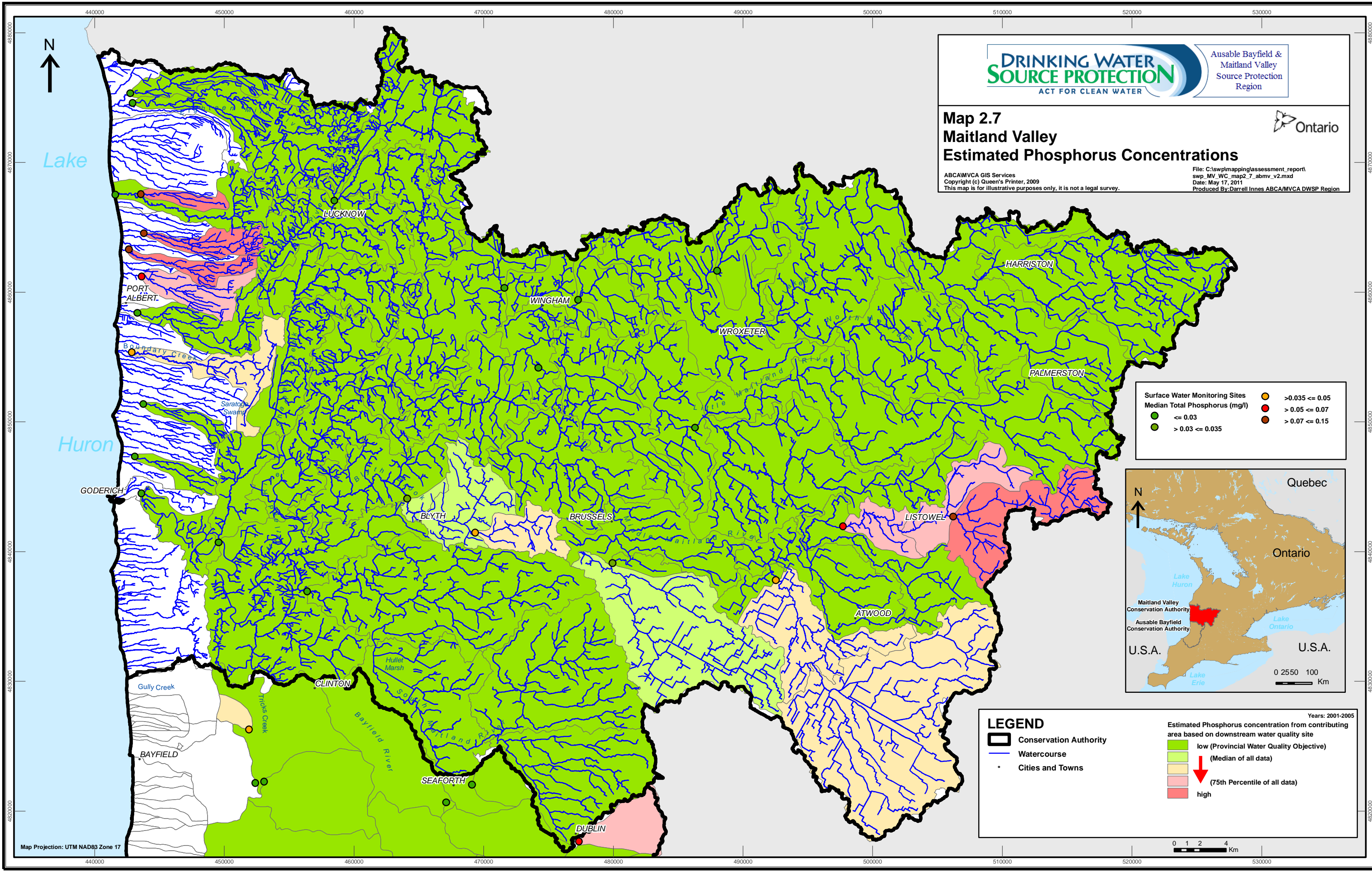


Map 2.7
Maitland Valley
Estimated Phosphorus Concentrations

ABCAMVCA GIS Services
Copyright (c) Queen's Printer, 2009
This map is for illustrative purposes only, it is not a legal survey.

File: C:\swp\mapping\assessment_report\ swp_MV_WC_map2_7_abmv_v2.mxd
Date: May 17, 2011
Produced By: Darrell Innes ABCA/MVCA DWSP Region



Surface Water Monitoring Sites

| | |
|------------------|------------------|
| ● ≤ 0.03 | ● > 0.035 ≤ 0.05 |
| ● > 0.03 ≤ 0.035 | ● > 0.05 ≤ 0.07 |
| | ● > 0.07 ≤ 0.15 |



LEGEND

- Conservation Authority
- Watercourse
- Cities and Towns

Years: 2001-2005

Estimated Phosphorus concentration from contributing area based on downstream water quality site

- low (Provincial Water Quality Objective) (Median of all data)
- (75th Percentile of all data)
- high