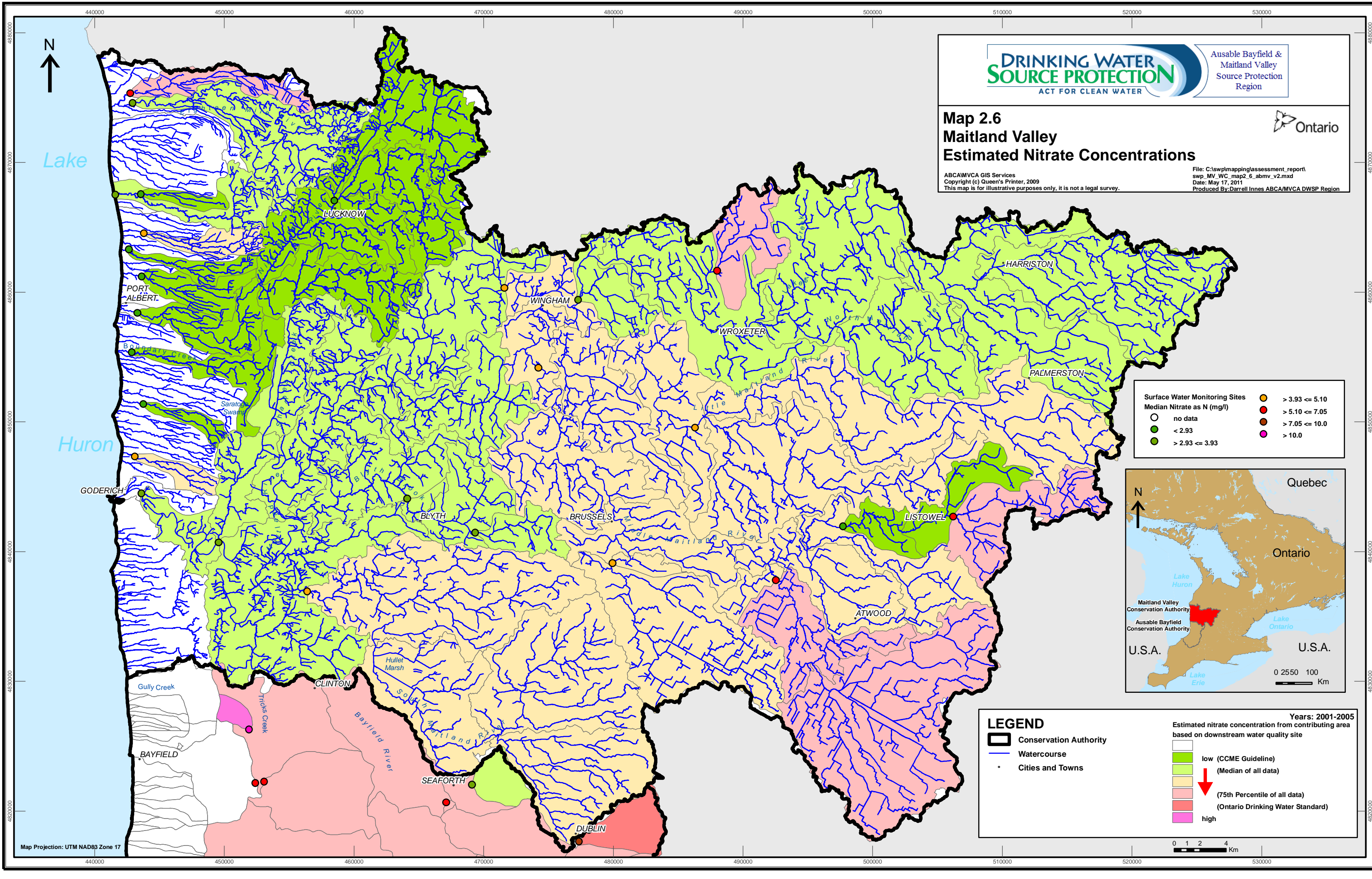


Map 2.6
Maitland Valley
Estimated Nitrate Concentrations

ABCAMVCA GIS Services
Copyright (c) Queen's Printer, 2009
This map is for illustrative purposes only, it is not a legal survey.

File: C:\swplmapping\assessment_report\ swp_MV_WC_map2_6_abmv_v2.mxd
Date: May 17, 2011
Produced By: Darrell Innes ABCAMVCA DWSP Region



Surface Water Monitoring Sites
Median Nitrate as N (mg/l)

○ no data	● > 3.93 <= 5.10
● < 2.93	● > 5.10 <= 7.05
● > 2.93 <= 3.93	● > 7.05 <= 10.0
	● > 10.0



LEGEND

- Conservation Authority
- Watercourse
- Cities and Towns

Estimated nitrate concentration from contributing area based on downstream water quality site

- low (CCME Guideline) (Median of all data)
- (75th Percentile of all data) (Ontario Drinking Water Standard)
- high

Years: 2001-2005