



Central Huron

Vulnerability Score	Seaforth - DNAPLs		
	Provincial Table Number (Table Name)		
	Significant	Moderate	Low
WHPA A, B, C (<5 year TOT)	9 (DWAS)		
6 (within WHPA D)		10 (DW6M)	11 (DW6L)

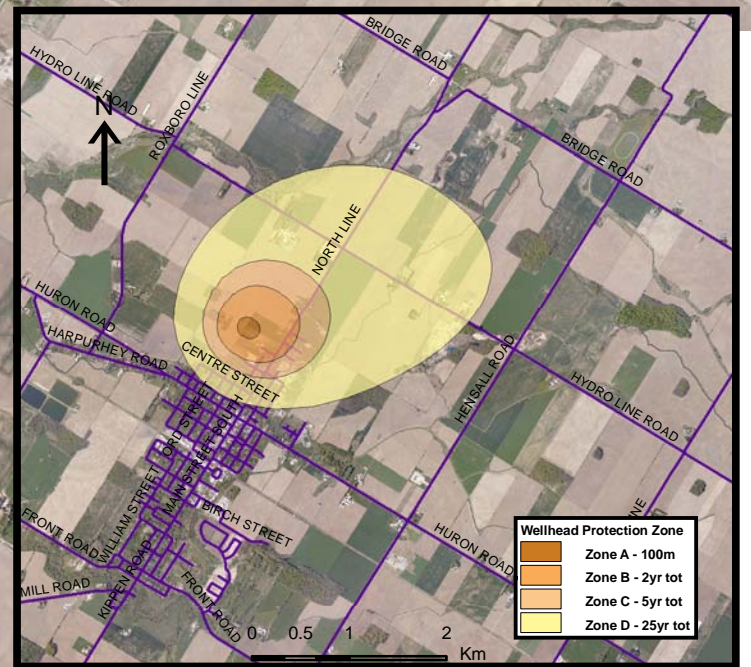
HURON COUNTY

Huron East

Seaforth - Pumping Well 2

Seaforth - Test Well 1

Seaforth - Pumping Well 1

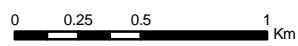


Base mapping produced under license with the Ontario Ministry of Natural Resources © 2010.  
 Source Protection Region Boundary provided by Ontario Ministry of Environment, 2006.  
 Wellhead Capture Zone and Vulnerability scoring provided by WESA Inc, Groundwater Vulnerability Assessment Municipality of Huron East (Seaforth), 2009.  
 Photos - First Base Solutions © 2006.

Map 4.83 Locations Where DNAPL Threats Can Be Significant, Moderate or Low Seaforth System

**LEGEND**

- Source Protection Area
- Municipal Boundary
- County Boundary
- Entire WHPA Capture Zone
- Municipal Well
- WHPA Threat Area Tot Zones - 100m, 2yr, 5yr
- 25 year tot with GWVA 6
- 5 Year Tot Zone
- Century Heights GUDI Threat Area
- GWVA 7.2
- IPZ Threat Area GWVA 6
- 5.4
- 5



Map Projection: UTM NAD83 Zone 17



Ausable Bayfield & Maitland Valley Source Protection Region

**Map 4.83 Locations Where DNAPL Threats Can Be Significant, Moderate or Low Seaforth System**



ABCAMVCA GIS Services  
 Copyright © Queen's Printer, 2010  
 This map is for illustrative purposes only, it is not a legal survey.

C:\swp\small\_projects\bmross\whpa\_database\_threats\whpa\_dnapl\_AB\_seaforth\_v10.mxd  
 Date: May 17, 2011  
 Produced By: Darrell Innes ABCA/MVCA DWSP Region