



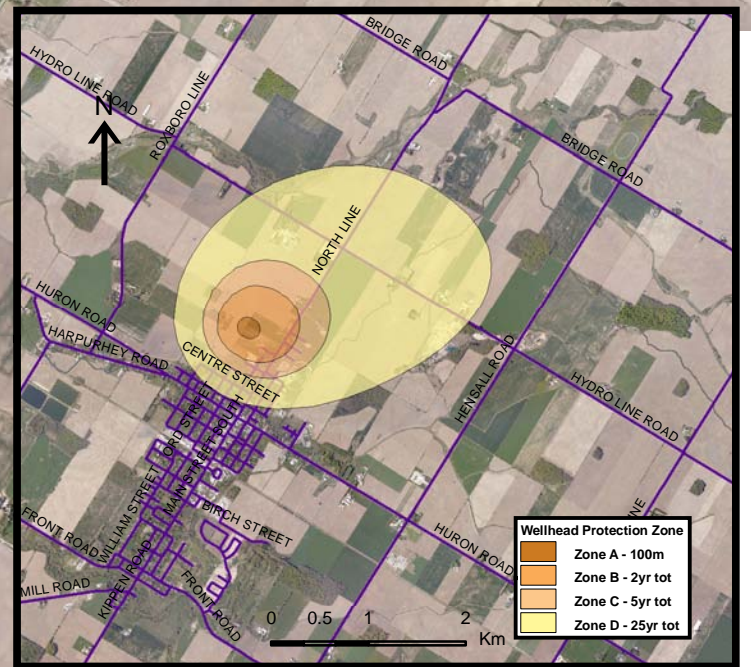
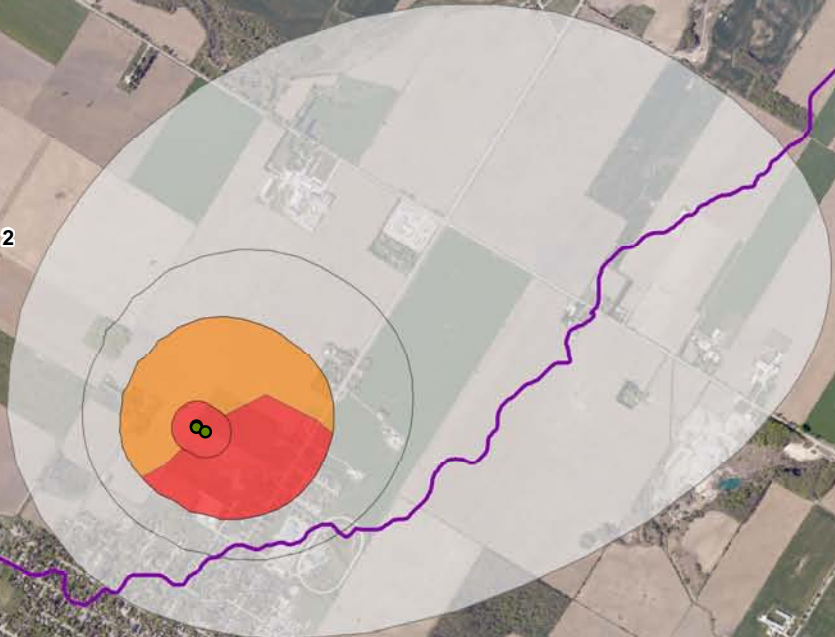
Central Huron

| Seaforth - Pathogens | | | |
|----------------------|--------------------------------------|------------|-----------|
| Vulnerability Score | Provincial Table Number (Table Name) | | |
| | Significant | Moderate | Low |
| 10 | 12 (PW10S) | 13 (PW10M) | |
| 8 | | 14 (PW8M) | 15 (PW8L) |
| 6 | | | |

HURON COUNTY

Huron East

Seaforth - Pumping Well 2
 Seaforth - Test Well 1
 Seaforth - Pumping Well 1

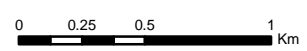


Base mapping produced under license with the Ontario Ministry of Natural Resources © 2010.
 Source Protection Region Boundary provided by Ontario Ministry of Environment, 2006.
 Wellhead Capture Zone and Vulnerability scoring provided by WESA Inc, Groundwater Vulnerability Assessment Municipality of Huron East (Seaforth), 2009.
 Photos - First Base Solutions © 2006.

Map 4.82 Locations Where Pathogen Threats Can Be Significant, Moderate or Low Seaforth System

LEGEND

- Source Protection Area
 - Municipal Boundary
 - County Boundary
 - Entire WHPA Capture Zone
 - Municipal Well
-
- WHPA Threat Area**
 - GWVA in Tot Zones - 100m, 2yr
 - 10
 - 8
 - 6
 - 2 Year Tot Zone
 - 7.2
 - Century Heights GUDI Threat Area
 - 7.2
-
- IPZ Threat Area**
 - GWVA
 - 6
 - 5.4
 - 5



Map Projection: UTM NAD83 Zone 17



Ausable Bayfield & Maitland Valley Source Protection Region

Map 4.82 Locations Where Pathogen Threats Can Be Significant, Moderate or Low Seaforth System



ABCAMVCA GIS Services
 Copyright © Queen's Printer, 2010
 This map is for illustrative purposes only, it is not a legal survey.

C:\sw\small_projects\bmross\whpa_database_threats\whpa_path_ab_seaforth_v10.mxd
 Date: May 17, 2011
 Produced By: Darrell Innes ABCA/MVCA DWSP Region

4820000

4820000