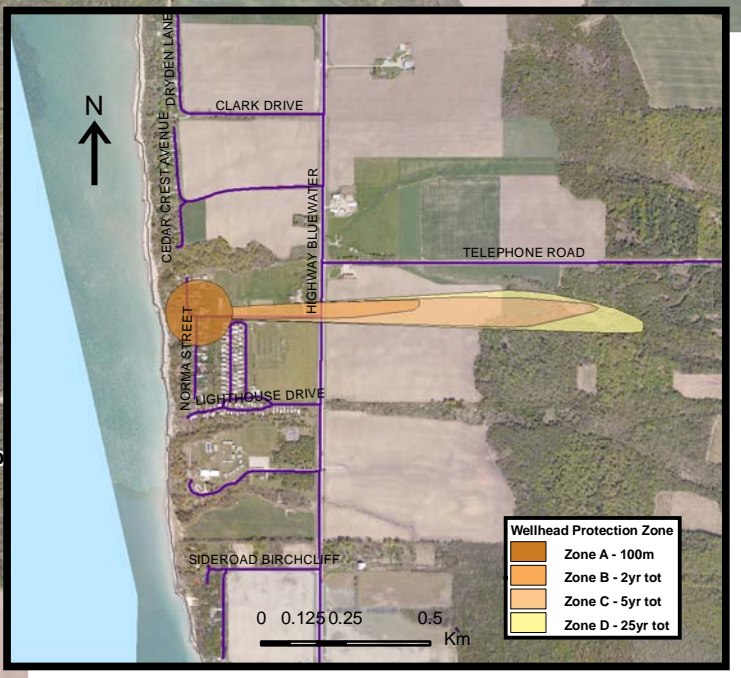
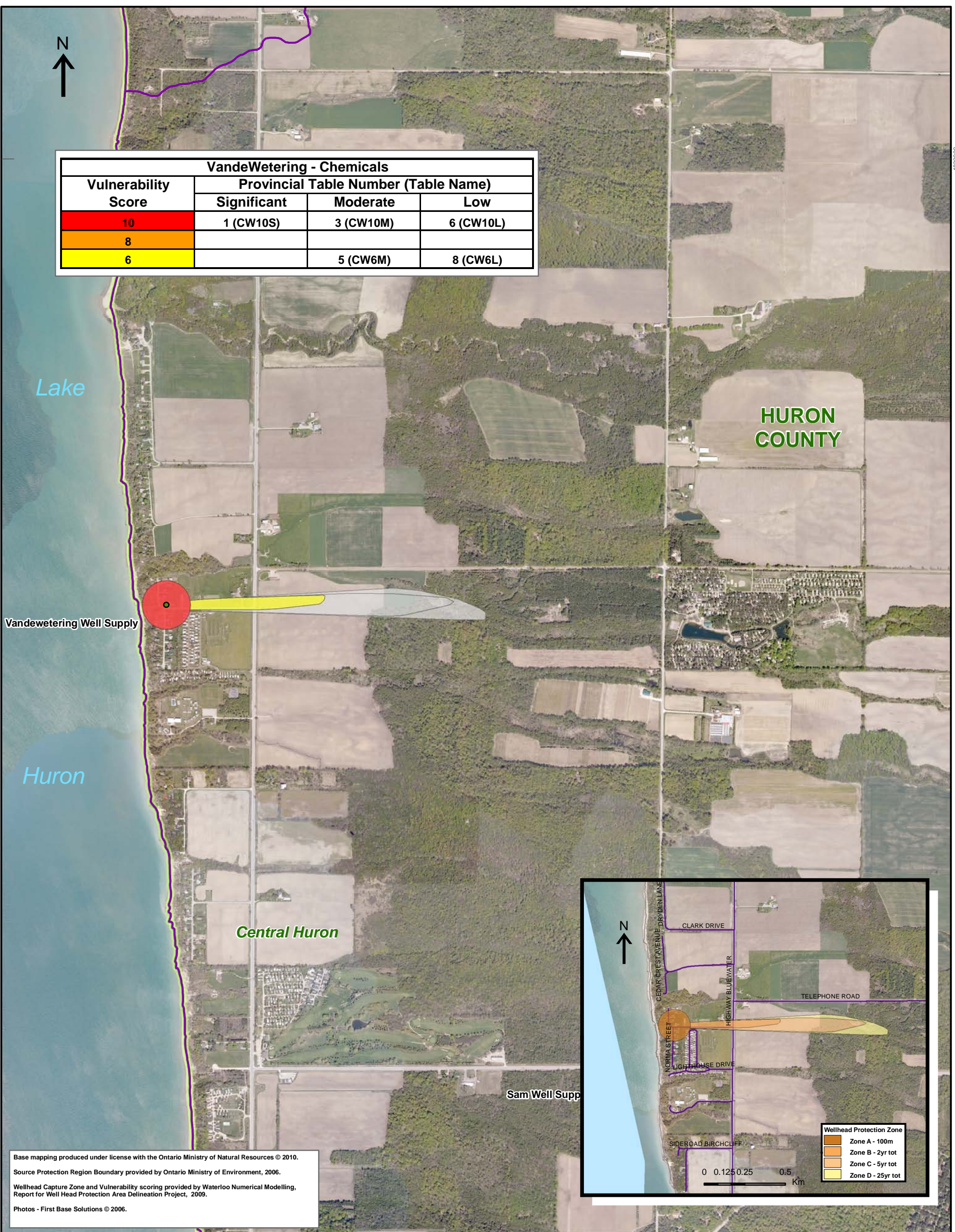




Vandewatering - Chemicals			
Vulnerability Score	Provincial Table Number (Table Name)		
	Significant	Moderate	Low
10	1 (CW10S)	3 (CW10M)	6 (CW10L)
8			
6		5 (CW6M)	8 (CW6L)



Base mapping produced under license with the Ontario Ministry of Natural Resources © 2010.
 Source Protection Region Boundary provided by Ontario Ministry of Environment, 2006.
 Wellhead Capture Zone and Vulnerability scoring provided by Waterloo Numerical Modelling, Report for Well Head Protection Area Delineation Project, 2009.
 Photos - First Base Solutions © 2006.

LEGEND

- Source Protection Area
- Municipal Boundary
- County Boundary
- Entire WHPA Capture Zone
- Municipal Well

WHPA Threat Area GWVA

- 10
- 8
- 6

Century Heights GUDI Threat Area GWVA

- 7.2

IPZ Threat Area GWVA

- 6
- 5.4
- 5

Map 4.68 Locations Where Chemical Threats Can Be Significant, Moderate or Low Vandewatering System

Map Projection: UTM NAD83 Zone 17

0 0.125 0.25 0.5 Km



Map 4.68 Locations Where Chemical Threats Can Be Significant, Moderate or Low Vandewatering System

ABCAMVCA GIS Services
 Copyright © Queen's Printer, 2010
 This map is for illustrative purposes only, it is not a legal survey.

C:\swp\small_projects\bmross\whpa_database_threats\whpa_chem_vandewatering_v10.mxd
 Date: May 17, 2011
 Produced By: Darrell Innes ABCA/MVCA DWSP Region

Ontario