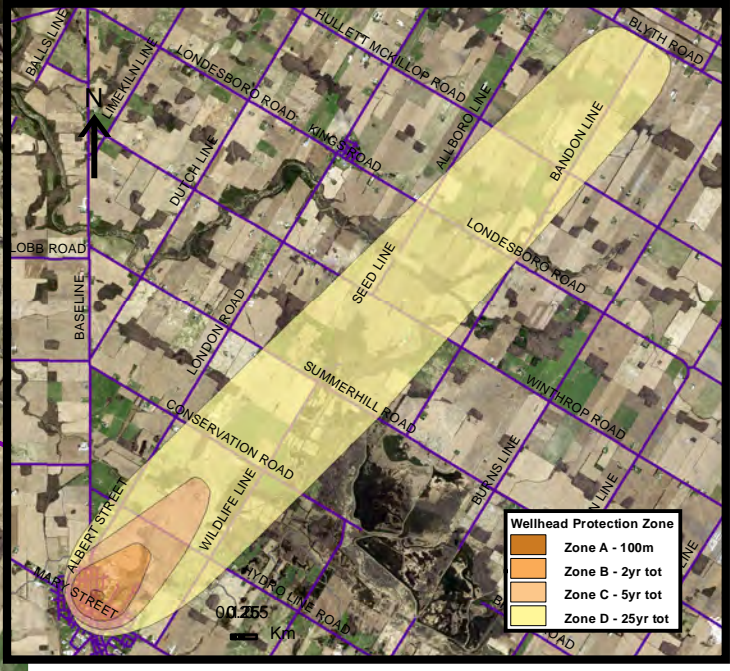




Base mapping produced under license with the Ontario Ministry of Natural Resources © 2015.
 Source Protection Region Boundary provided by Ontario Ministry of Environment, 2006.
 Wellhead Capture Zone and Vulnerability scoring provided by Waterloo Numerical Modelling, Report for Well Head Protection Area Delineation Project, 2009.



Map 4.54 Locations Where Chemical Threats Can Be Significant, Moderate or Low Clinton System

LEGEND

Source Protection Area	WHPA Threat Area GWVA	IPZ Threat Area GWVA
Municipal Boundary	10	6
County Boundary	8	5.4
Entire WHPA Capture Zone	6	5
Municipal Well	Century Heights GUDI Threat Area GWVA	
	7.2	

Map Projection: UTM NAD83 Zone 17

0 0.25 0.5 1 Km

DRINKING WATER SOURCE PROTECTION
 ACT FOR CLEAN WATER

Ausable Bayfield & Maitland Valley Source Protection Region

Map 4.54 Locations Where Chemical Threats Can Be Significant, Moderate or Low Clinton System

Ontario

ABCA/MVCA GIS Services
 Copyright © Queen's Printer, 2018
 This map is for illustrative purposes only, it is not a legal survey.

File: Y:\Projects_Mxds\SWPAR_Maps\ABAB_Clinton_Chemical.mxd
 Date: Jan 08, 2018
 Produced By: A. Clarke ABCA/MVCA DWSP Region