

450000



Zurich - DNAPLs			
Vulnerability Score	Provincial Table Number (Table Name)		
	Significant	Moderate	Low
WHPA A, B, C (<5 year TOT)	9 (DWAS)		
6 (within WHPA D)		10 (DW6M)	11 (DW6L)

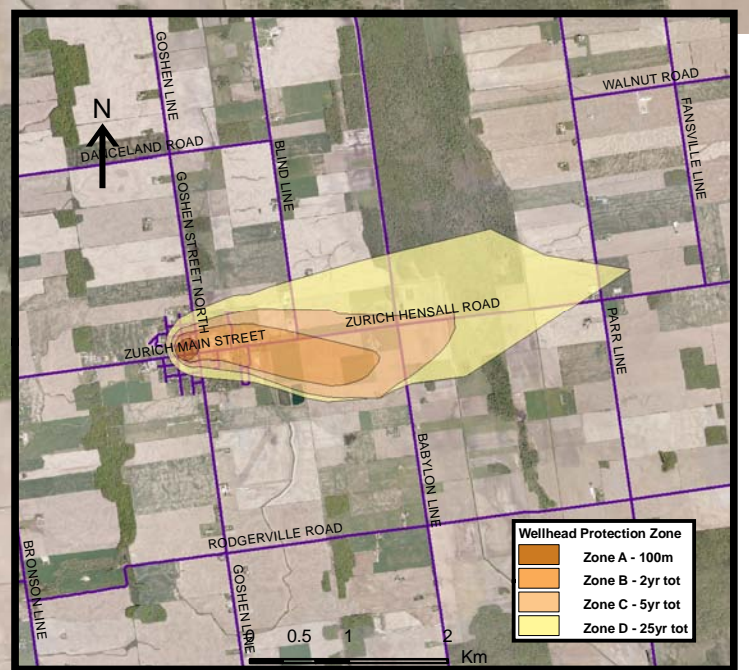
Bluewater

Zurich-Well 1

Zurich-Well 3

HURON COUNTY

Base mapping produced under license with the Ontario Ministry of Natural Resources © 2010.
 Source Protection Region Boundary provided by Ontario Ministry of Environment, 2006.
 Wellhead Capture Zone and Vulnerability scoring provided by Waterloo Numerical Modelling, Report for Well Head Protection Area Delineation Project, 2009.
 Photos - First Base Solutions © 2006.



450000

Map 4.43 Locations Where DNAPL Threats Can Be Significant, Moderate or Low Zurich System

LEGEND

Source Protection Area	WHPA Threat Area	IPZ Threat Area
Municipal Boundary	Tot Zones - 100m, 2yr, 5yr	GWVA
County Boundary	25 year tot with GWVA 6	6
Entire WHPA Capture Zone	5 Year Tot Zone	5.4
Municipal Well	Century Heights GUDI Threat Area	5
	GWVA	
	7.2	

Map Projection: UTM NAD83 Zone 17

0 0.25 0.5 1 Km

DRINKING WATER SOURCE PROTECTION
 ACT FOR CLEAN WATER

Ausable Bayfield & Maitland Valley Source Protection Region

Map 4.43 Locations Where DNAPL Threats Can Be Significant, Moderate or Low Zurich System



ABCA/MVCA GIS Services
 Copyright © Queen's Printer, 2010
 This map is for illustrative purposes only, it is not a legal survey.
 C:\swp\small_projects\bmross\whpa_database_threats\whpa_dnapi_zurich_v10.mxd
 Date: May 17, 2011
 Produced By: Darrell Innes ABCA/MVCA DWSP Region