

460000



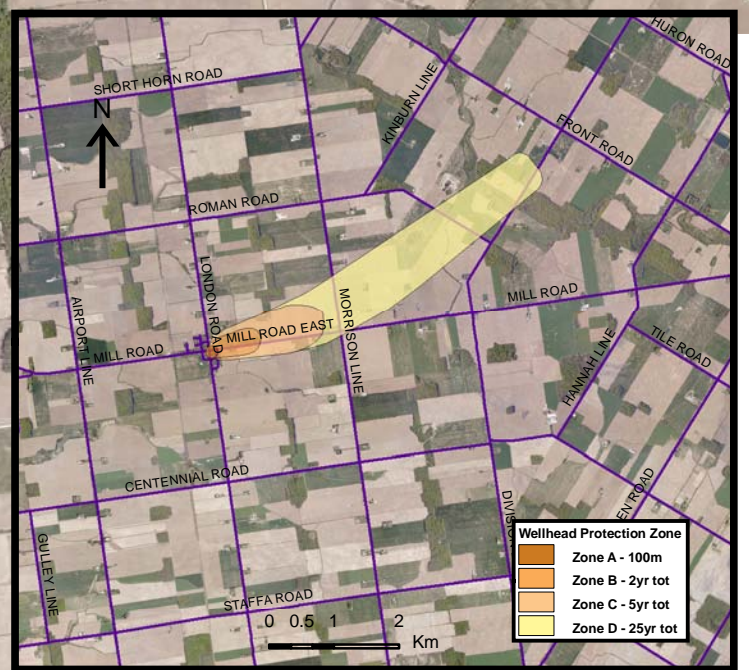
Huron East

Brucefield - Pathogens			
Vulnerability Score	Provincial Table Number (Table Name)		
	Significant	Moderate	Low
10	12 (PW10S)	13 (PW10M)	
8		14 (PW8M)	15 (PW8L)
6			16 (PW6L)

Bluewater

Brucefield Well Supply

HURON COUNTY



Base mapping produced under license with the Ontario Ministry of Natural Resources © 2010.

Source Protection Region Boundary provided by Ontario Ministry of Environment, 2006.

Wellhead Capture Zone and Vulnerability scoring provided by Waterloo Numerical Modelling, Report for Well Head Protection Area Delineation Project, 2009.

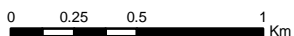
Photos - First Base Solutions © 2006.

460000

Map 4.21 Locations Where Pathogen Threats Can Be Significant, Moderate or Low Brucefield System

**LEGEND**

- Source Protection Area
  - Municipal Boundary
  - County Boundary
  - Entire WHPA Capture Zone
  - Municipal Well
- 
- WHPA Threat Area**
  - GWVA in Tot Zones - 100m, 2yr
    - 10
    - 8
    - 6
  - 2 Year Tot Zone
  - Century Heights GUDI Threat Area
  - GWVA
    - 7.2
- 
- IPZ Threat Area**
  - GWVA
    - 6
    - 5.4
    - 5



Map Projection: UTM NAD83 Zone 17



Ausable Bayfield & Maitland Valley Source Protection Region

**Map 4.21 Locations Where Pathogen Threats Can Be Significant, Moderate or Low Brucefield System**



ABCAMVCA GIS Services  
Copyright © Queen's Printer, 2010  
This map is for illustrative purposes only, it is not a legal survey.

C:\swp\small\_projects\bmross\whpa\_database\_threats\whpa\_path\_brucefield\_v10.mxd  
Date: May 17, 2011  
Produced By: Darrell Innes ABCA/MVCA DWSP Region