

460000



Huron East

Brucefield - Chemicals			
Vulnerability Score	Provincial Table Number (Table Name)		
	Significant	Moderate	Low
10	1 (CW10S)	3 (CW10M)	6 (CW10L)
8	2 (CW8S)	4 (CW8M)	7 (CW8L)
6		5 (CW6M)	8 (CW6L)

Bluewater

Brucefield Well Supply

HURON COUNTY

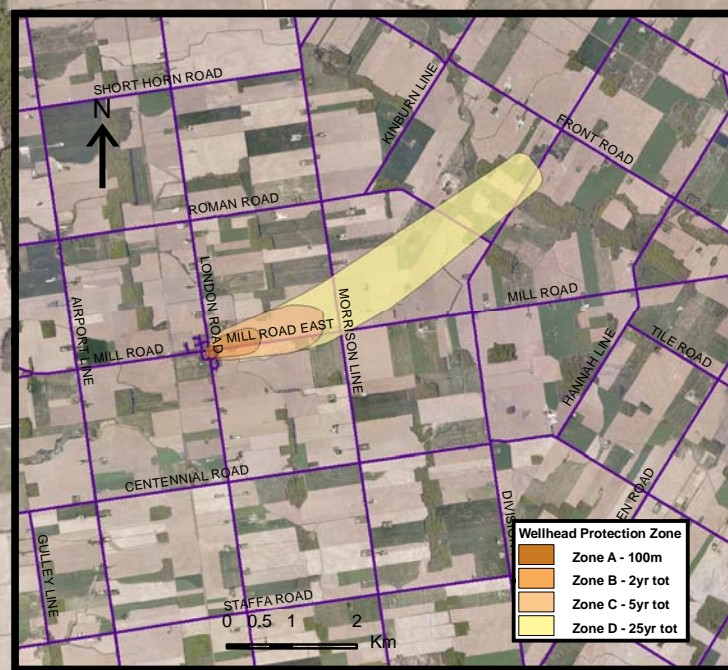
4820000

Base mapping produced under license with the Ontario Ministry of Natural Resources © 2010.

Source Protection Region Boundary provided by Ontario Ministry of Environment, 2006.

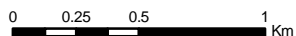
Wellhead Capture Zone and Vulnerability scoring provided by Waterloo Numerical Modelling, Report for Well Head Protection Area Delineation Project, 2009.

Photos - First Base Solutions © 2006.



LEGEND

- Source Protection Area
- Municipal Boundary
- County Boundary
- Entire WHPA Capture Zone
- Municipal Well
- WHPA Threat Area GWVA**
- 10
- 8
- 6
- Century Heights GUDI Threat Area GWVA**
- 7.2
- IPZ Threat Area GWVA**
- 6
- 5.4
- 5



Map Projection: UTM NAD83 Zone 17



Ausable Bayfield & Maitland Valley Source Protection Region

Map 4.20 Locations Where Chemical Threats Can Be Significant, Moderate or Low Brucefield System



ABCAMVCA GIS Services
Copyright © Queen's Printer, 2010
This map is for illustrative purposes only, it is not a legal survey.

C:\swp\small_projects\bmross\whpa_database_threats\whpa_chem_brucefield_v10.mxd
Date: May 17, 2011
Produced By: Darrell Innes ABCA/MVCA DWSP Region

4820000