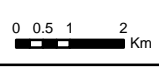


Base mapping produced under license with the Ontario Ministry of Natural Resources © 2015.  
 Source Protection Region Boundary provided by Ontario Ministry of Environment, 2006.  
 Wellhead Capture Zone and Vulnerability scoring provided by Waterloo Numerical Modelling, Report for Well Head Protection Area Delineation Project, 2009.  
 Groundwater Vulnerability Assessment Municipality of Huron East (Seaforth), 2009.  
 Intake Protection Zone and Vulnerability scoring provided by Stantec Consulting Ltd. Surface Water Vulnerability Assessment Addendum for the Lake Huron Water Treatment Plant Phase 1 Addendum, 2009.

Map 4.14 Well Head Protection Areas and Intake Protection Zones Bluewater

LEGEND	
	Source Protection Area
	Municipal Boundary
	County Boundary
	Road
	Watercourse
	Cities and Towns
	Municipal Well
	Surface Water Intake
	Wellhead Protection Zone
	Zone A - 100m
	Zone B - 2yr tot
	Zone C - 5yr tot
	Zone D - 25yr tot
	Zone E - GUDI zone
	Intake Protection Zone
	IPZ1
	IPZ2

Map Projection: UTM NAD83 Zone 17



### Map 4.14 Well Head Protection Areas and Intake Protection Zones Bluewater



ABCA/MVCA GIS Services  
 Copyright © Queen's Printer, 2018  
 This map is for illustrative purposes only, it is not a legal survey.

File: Y:\Projects\_Mxds\SWPIAR\_Maps\AB\Bluewater\_WHPA.mxd  
 Date: Jan 08, 2018  
 Produced By: A. Clarke ABCA/MVCA DWSP Region