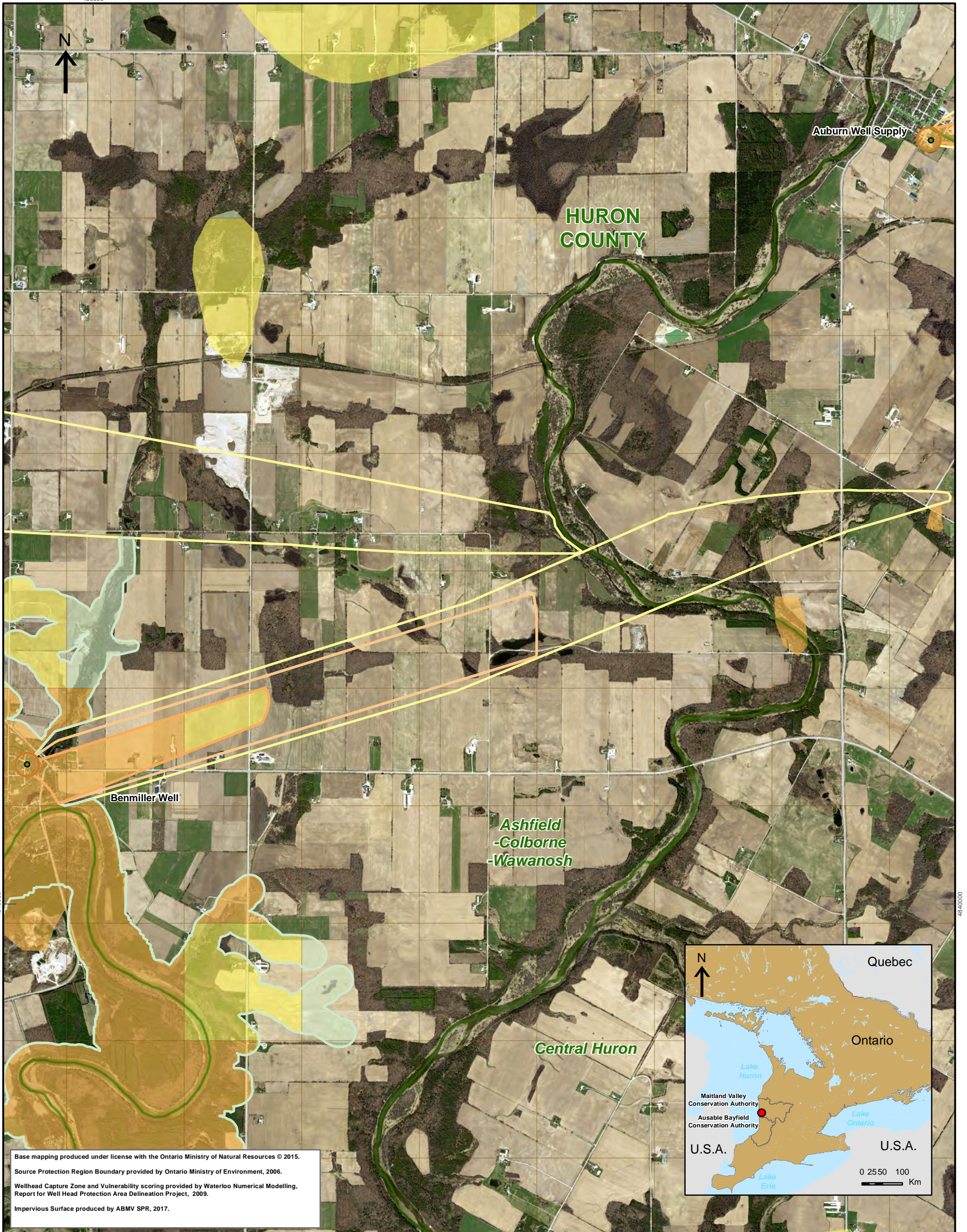


450000



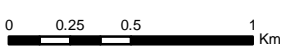
Base mapping produced under license with the Ontario Ministry of Natural Resources © 2015.
 Source Protection Region Boundary provided by Ontario Ministry of Environment, 2006.
 Wellhead Capture Zone and Vulnerability scoring provided by Waterloo Numerical Modelling, Report for Well Head Protection Area Delineation Project, 2009.
 Impervious Surface produced by ABMV SPR, 2017.



Map 4.11 Total Impervious Surface Within Vulnerable Areas Benmiller System

LEGEND

- | | | |
|------------------------|-----------------------------|----------------------------------|
| Source Protection Area | Zone A - 100m | Impervious Surface Percent < 1.0 |
| Municipal Boundary | Zone B - 2yr tot | 1.0 - < 8.0 |
| County Boundary | Zone C - 5yr tot | 8.0 - < 80.0 |
| Municipal Well | Zone D - 25yr tot | > 80.0 |
| | Zone E - GUDI zone | 1km Grid |
| | Intake Protection Zone IPZ1 | |
| | Intake Protection Zone IPZ2 | |



Map Projection: UTM NAD83 Zone 17



Ausable Bayfield & Maitland Valley Source Protection Region

Map 4.11 Total Impervious Surface Within Vulnerable Areas Benmiller System



ABCA/MVCA GIS Services
 Copyright © Queen's Printer, 2017
 File: Y:\Projects_Mxds\SWPAR_Maps\MV\Benmiller_Imperv.mxd
 Date: Dec 19, 2017
 This map is for illustrative purposes only, it is not a legal survey. Produced By: A. Clarke ABCA/MVCA DWSP Region