

**Map 4.3 - Maitland Valley SPA Significant Groundwater Recharge Areas**



ABCAMVCA GIS Services  
Copyright © Queen's Printer, 2011  
This map is for illustrative purposes only, it is not a legal survey.

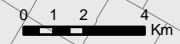
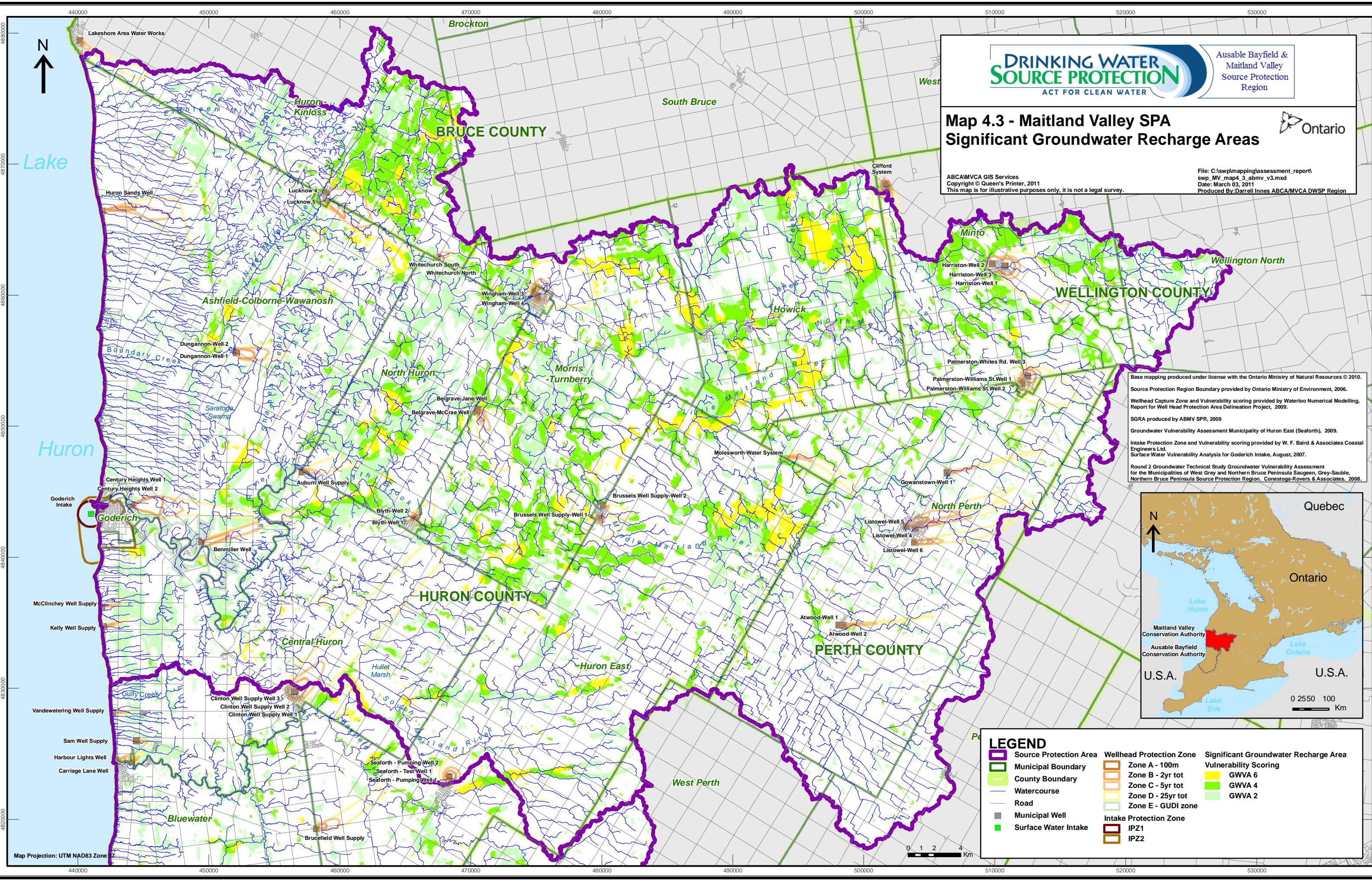
File: C:\swplmapping\assessment\_report\swp\_MV\_map4\_3\_abmv\_v3.mxd  
Date: March 03, 2011  
Produced By: Darrell Innes ABCA/MVCA DWSP Region

Base mapping produced under license with the Ontario Ministry of Natural Resources © 2010.  
Source Protection Region Boundary provided by Ontario Ministry of Environment, 2006.  
Wellhead Capture Zone and Vulnerability scoring provided by Waterloo Numerical Modelling, Report for Well Head Protection Area Delineation Project, 2009.  
SGRA produced by ABMV SPR, 2009  
Groundwater Vulnerability Assessment Municipality of Huron East (Seaforth), 2009.  
Intake Protection Zone and Vulnerability scoring provided by W. F. Baird & Associates Coastal Engineers Ltd. Surface Water Vulnerability Analysis for Goderich Intake, August, 2007.  
Round 2 Groundwater Technical Study Groundwater Vulnerability Assessment for the Municipalities of West Grey and Northern Bruce Peninsula Sauguen, Grey-Sauble, Northern Bruce Peninsula Source Protection Region. Conestoga-Rovers & Associates. 2008.



**LEGEND**

Source Protection Area	Wellhead Protection Zone	Significant Groundwater Recharge Area Vulnerability Scoring
Municipal Boundary	Zone A - 100m	GWVA 6
County Boundary	Zone B - 2yr tot	GWVA 4
Watercourse	Zone C - 5yr tot	GWVA 2
Road	Zone D - 25yr tot	
Municipal Well	Zone E - GUDI zone	
Surface Water Intake	Intake Protection Zone	
	IPZ1	
	IPZ2	



Map Projection: UTM NAD83 Zone 17