



Century Heights - Pathogens			
Vulnerability Score	Provincial Table Number (Table Name)		
	Significant	Moderate	Low
10	12 (PW10S)	13 (PW10M)	
8			
7.2		53 (PIPZWE7.2M)	62 (PIPZWE7.2L)
6			16 (PW6L)

Ashfield  
-Colborne  
-Wawanosh

Century Heights Well 1  
Century Heights Well 2

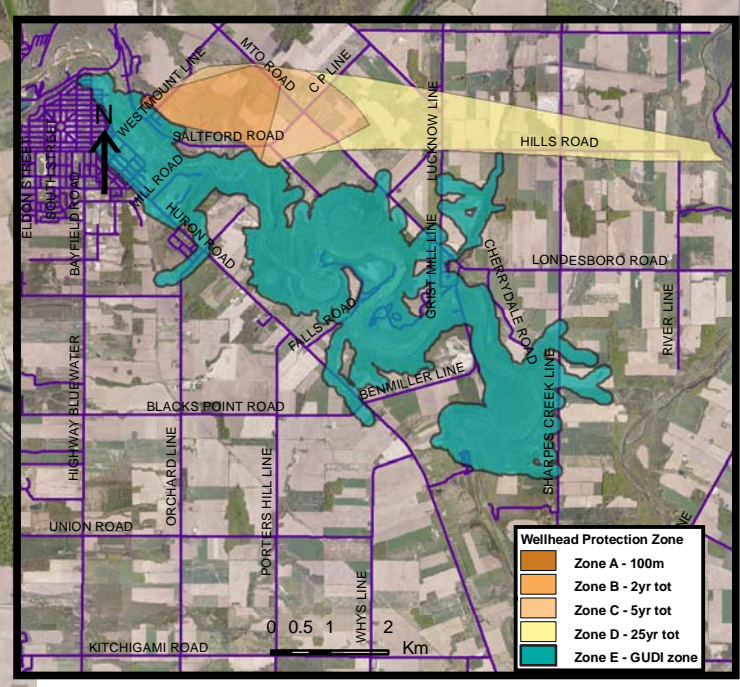
Goderich

Benmiller Well

Central Huron

HURON COUNTY

Base mapping produced under license with the Ontario Ministry of Natural Resources © 2010.  
Source Protection Region Boundary provided by Ontario Ministry of Environment, 2006.  
Wellhead Capture Zone and Vulnerability scoring provided by Waterloo Numerical Modelling, Report for Well Head Protection Area Delineation Project, 2009.  
Photos - First Base Solutions © 2006.



**LEGEND**

- Source Protection Area (purple outline)
- Municipal Boundary (green outline)
- County Boundary (grey outline)
- Entire WHPA Capture Zone (grey fill)
- Municipal Well (red circle)

**WHPA Threat Area**  
GWVA in Tot Zones - 100m, 2yr

- 10 (red)
- 8 (orange)
- 6 (yellow)

2 Year Tot Zone (dashed line)

Century Heights GUDI Threat Area GWVA

- 7.2 (orange)

**IPZ Threat Area**  
GWVA

- 6 (yellow)
- 5.4 (light yellow)
- 5 (pale yellow)

Map Projection: UTM NAD83 Zone 17

Scale: 0 0.25 0.5 1 Km



**Map 4.22 Locations Where Pathogen Threats Can Be Significant, Moderate or Low Century Heights System**

ABCAMVCA GIS Services  
Copyright © Queen's Printer, 2010  
This map is for illustrative purposes only, it is not a legal survey.  
C:\swp\small\_projects\bmross\whpa\_database\_threats\whpa\_path\_century\_heights\_v10.mxd  
Date: March 12, 2010  
Produced By: Darrell Innes ABCA/MVCA DWSP Region