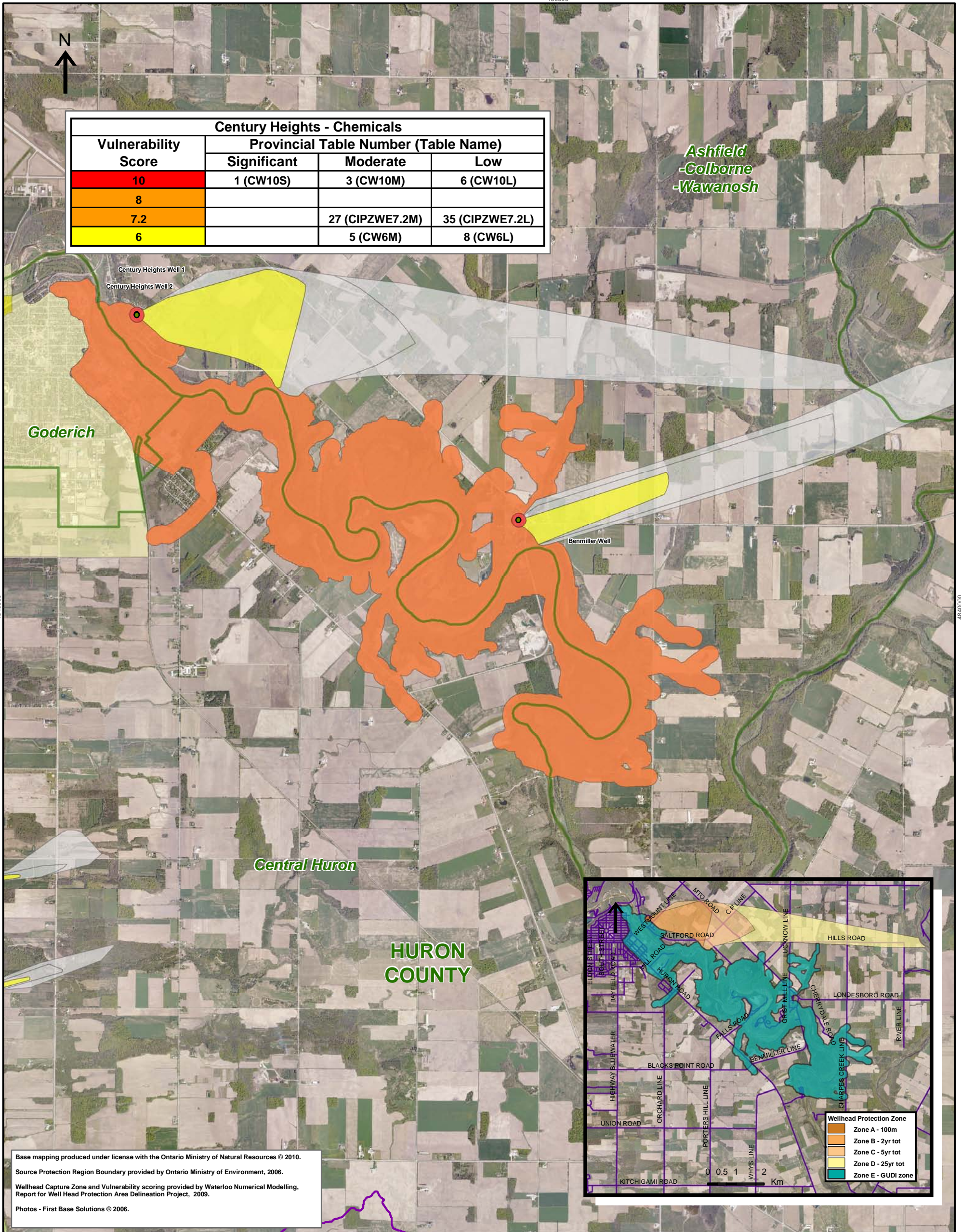


Century Heights - Chemicals			
Vulnerability Score	Provincial Table Number (Table Name)		
	Significant	Moderate	Low
10	1 (CW10S)	3 (CW10M)	6 (CW10L)
8			
7.2		27 (CIPZWE7.2M)	35 (CIPZWE7.2L)
6		5 (CW6M)	8 (CW6L)



Base mapping produced under license with the Ontario Ministry of Natural Resources © 2010.  
 Source Protection Region Boundary provided by Ontario Ministry of Environment, 2006.  
 Wellhead Capture Zone and Vulnerability scoring provided by Waterloo Numerical Modelling, Report for Well Head Protection Area Delineation Project, 2009.  
 Photos - First Base Solutions © 2006.

**LEGEND**

- Source Protection Area
- Municipal Boundary
- County Boundary
- Entire WHPA Capture Zone
- Municipal Well

**WHPA Threat Area GWVA**

- 10
- 8
- 6

**Century Heights GUDI Threat Area GWVA**

- 7.2

**IPZ Threat Area GWVA**

- 6
- 5.4
- 5

Map 4.21 Locations Where Chemical Threats Can Be Significant, Moderate or Low Century Heights System

Map Projection: UTM NAD83 Zone 17

0 0.25 0.5 1 Km

**DRINKING WATER SOURCE PROTECTION**  
 ACT FOR CLEAN WATER

Ausable Bayfield & Maitland Valley Source Protection Region

**Map 4.21 Locations Where Chemical Threats Can Be Significant, Moderate or Low Century Heights System**

Ontario

ABCAMVCA GIS Services  
 Copyright © Queen's Printer, 2010  
 This map is for illustrative purposes only, it is not a legal survey.

C:\swp\small\_projects\bmross\whpa\_database\_threats\whpa\_chem\_century\_heights\_v10.mxd  
 Date: March 12, 2010  
 Produced By: Darrell Innes ABCA/MVCA DWSP Region