



Palmerston - DNAPLs			
Vulnerability Score	Provincial Table Number (Table Name)		
	Significant	Moderate	Low
WHPA A, B, C (<5 year TOT)	9 (DWAS)		
6 (within WHPA D)		10 (DW6M)	11 (DW6L)

WELLINGTON COUNTY

Minto

Palmerston-Whites Rd. Well 3

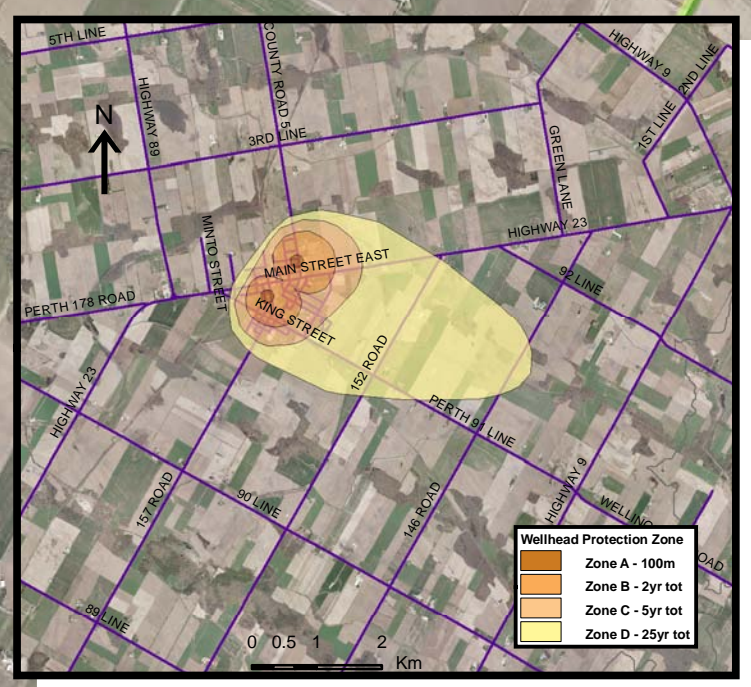
Palmerston-Williams St. Well 1

Palmerston-Williams St. Well 2

North Perth

PERTH COUNTY

Base mapping produced under license with the Ontario Ministry of Natural Resources © 2010.
 Source Protection Region Boundary provided by Ontario Ministry of Environment, 2006.
 Wellhead Capture Zone and Vulnerability scoring provided by Waterloo Numerical Modelling, Report for Well Head Protection Area Delineation Project, 2009.
 Photos - First Base Solutions © 2006.



510000

Map 4.159 Locations Where DNAPL Threats Can Be Significant, Moderate or Low Palmerston System

LEGEND

Source Protection Area	WHPA Threat Area	IPZ Threat Area
Municipal Boundary	Tot Zones - 100m, 2yr, 5yr	GWVA
County Boundary	25 year tot with GWVA 6	6
Entire WHPA Capture Zone	5 Year Tot Zone	5.4
Municipal Well	Century Heights GUDI Threat Area	5
	GWVA	
	7.2	

Map Projection: UTM NAD83 Zone 17

0 0.25 0.5 1 Km



Map 4.159 Locations Where DNAPL Threats Can Be Significant, Moderate or Low Palmerston System



ABCAMVCA GIS Services
 Copyright © Queen's Printer, 2010
 This map is for illustrative purposes only, it is not a legal survey.

C:\swp\small_projects\bmross\whpa_database_threats\whpa_dnapl_palmerston_v10.mxd
 Date: March 15, 2010
 Produced By: Darrell Innes ABCA/MVCA DWSP Region