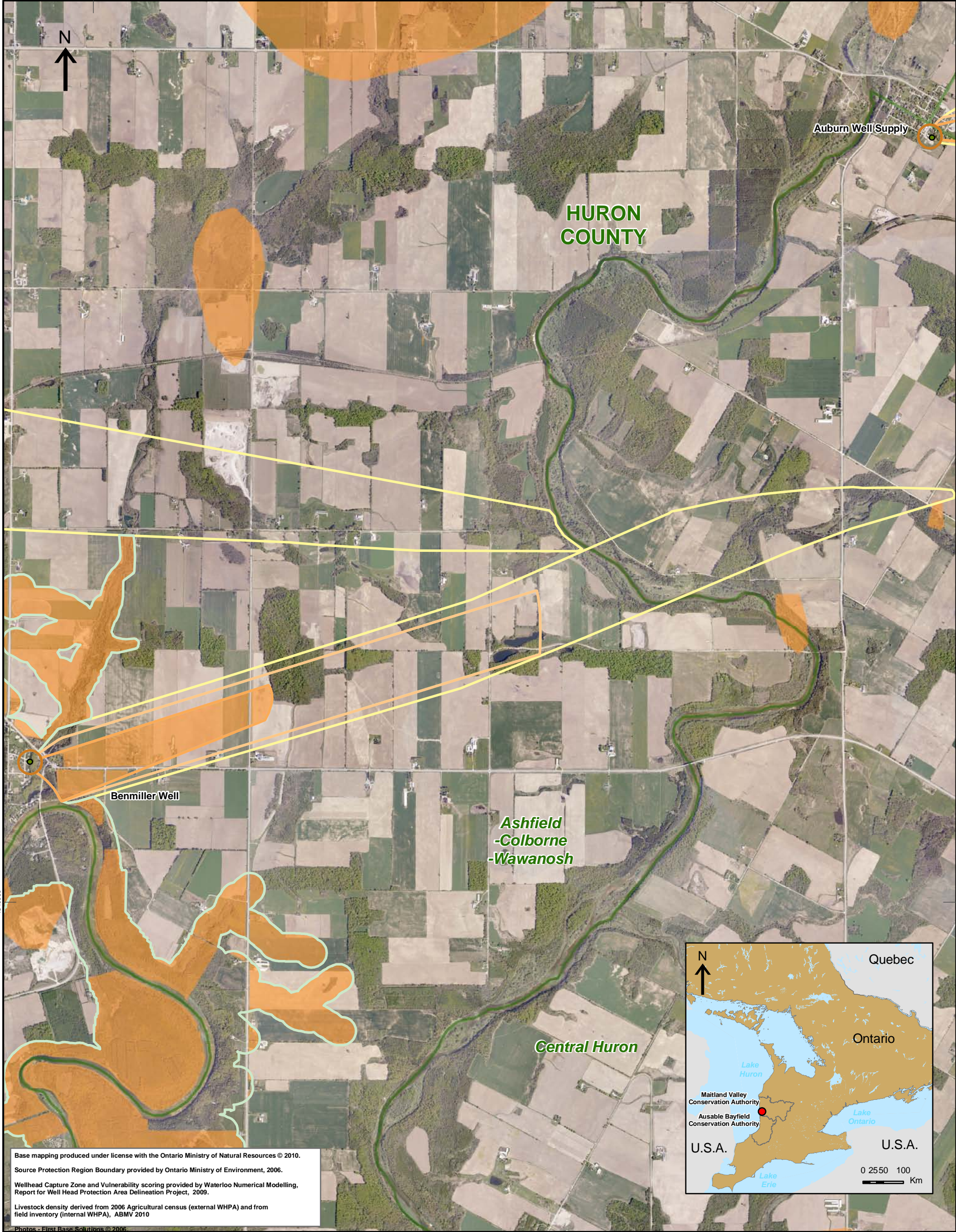


450000



Base mapping produced under license with the Ontario Ministry of Natural Resources © 2010.
 Source Protection Region Boundary provided by Ontario Ministry of Environment, 2006.
 Wellhead Capture Zone and Vulnerability scoring provided by Waterloo Numerical Modelling, Report for Well Head Protection Area Delineation Project, 2009.
 Livestock density derived from 2006 Agricultural census (external WHPA) and from field inventory (internal WHPA), ABMV 2010

Photos - First Base Solutions © 2006

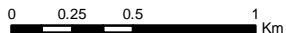
450000



Map 4.13
Livestock Density
Benmiller System

LEGEND

- | | | |
|------------------------|--------------------------|-------------------------|
| Source Protection Area | Wellhead Protection Zone | Nutrient Units per acre |
| Municipal Boundary | Zone A - 100m | < .5 |
| County Boundary | Zone B - 2yr tot | .5 - < 1.0 |
| Municipal Well | Zone C - 5yr tot | > 1.0 |
| | Zone D - 25yr tot | |
| | Zone E - GUDI zone | |
| | Intake Protection Zone | |
| | IPZ1 | |
| | IPZ2 | |



Map Projection: UTM NAD83 Zone 17



Ausable Bayfield & Maitland Valley
Source Protection
Region

Map 4.13 Livestock Density Benmiller System



ABCAMVCA GIS Services
 Copyright © Queen's Printer, 2010
 This map is for illustrative purposes only, it is not a legal survey.

C:\swp\small_projects\cathy\assessment_report_whpa\
 whpa_nu_acre_benmiller_v9.mxd
 Date: April 15, 2010
 Produced By: Darrell Innes ABCA/MVCA DWSP Region