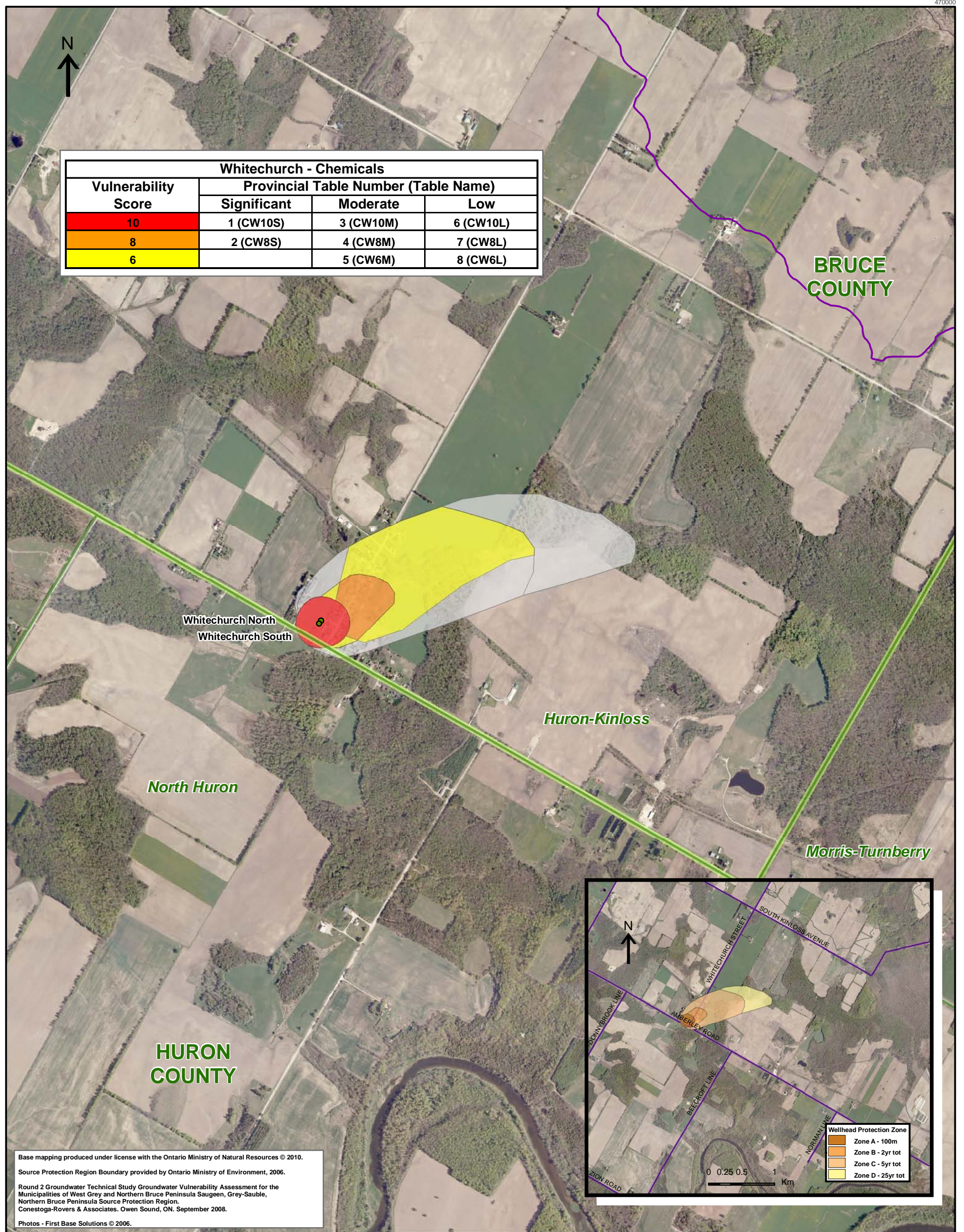


Whitechurch - Chemicals			
Vulnerability Score	Provincial Table Number (Table Name)		
	Significant	Moderate	Low
10	1 (CW10S)	3 (CW10M)	6 (CW10L)
8	2 (CW8S)	4 (CW8M)	7 (CW8L)
6		5 (CW6M)	8 (CW6L)



Base mapping produced under license with the Ontario Ministry of Natural Resources © 2010.
 Source Protection Region Boundary provided by Ontario Ministry of Environment, 2006.
 Round 2 Groundwater Technical Study Groundwater Vulnerability Assessment for the Municipalities of West Grey and Northern Bruce Peninsula Saugeen, Grey-Sauble, Northern Bruce Peninsula Source Protection Region.
 Conestoga-Rovers & Associates, Owen Sound, ON, September 2008.
 Photos - First Base Solutions © 2006.

LEGEND

- Source Protection Area
- Municipal Boundary
- County Boundary
- Entire WHPA Capture Zone
- Municipal Well

WHPA Threat Area GWVA

- 10
- 8
- 6

Century Heights GUDI Threat Area GWVA

- 7.2

IPZ Threat Area GWVA

- 6
- 5.4
- 5

Map 4.129 Locations Where Chemical Threats Can Be Significant, Moderate or Low Whitechurch System

Map Projection: UTM NAD83 Zone 17

0 0.125 0.25 0.5 Km

DRINKING WATER SOURCE PROTECTION
 ACT FOR CLEAN WATER

Ausable Bayfield & Maitland Valley Source Protection Region

Map 4.129 Locations Where Chemical Threats Can Be Significant, Moderate or Low Whitechurch System

ABCAMVCA GIS Services
 Copyright © Queen's Printer, 2010
 This map is for illustrative purposes only, it is not a legal survey.

C:\swp\small_projects\bmross\whpa_database_threats\whpa_chem_whitechurch_v10.mxd
 Date: March 15, 2010
 Produced By: Darrell Innes ABCA/MVCA DWSP Region