



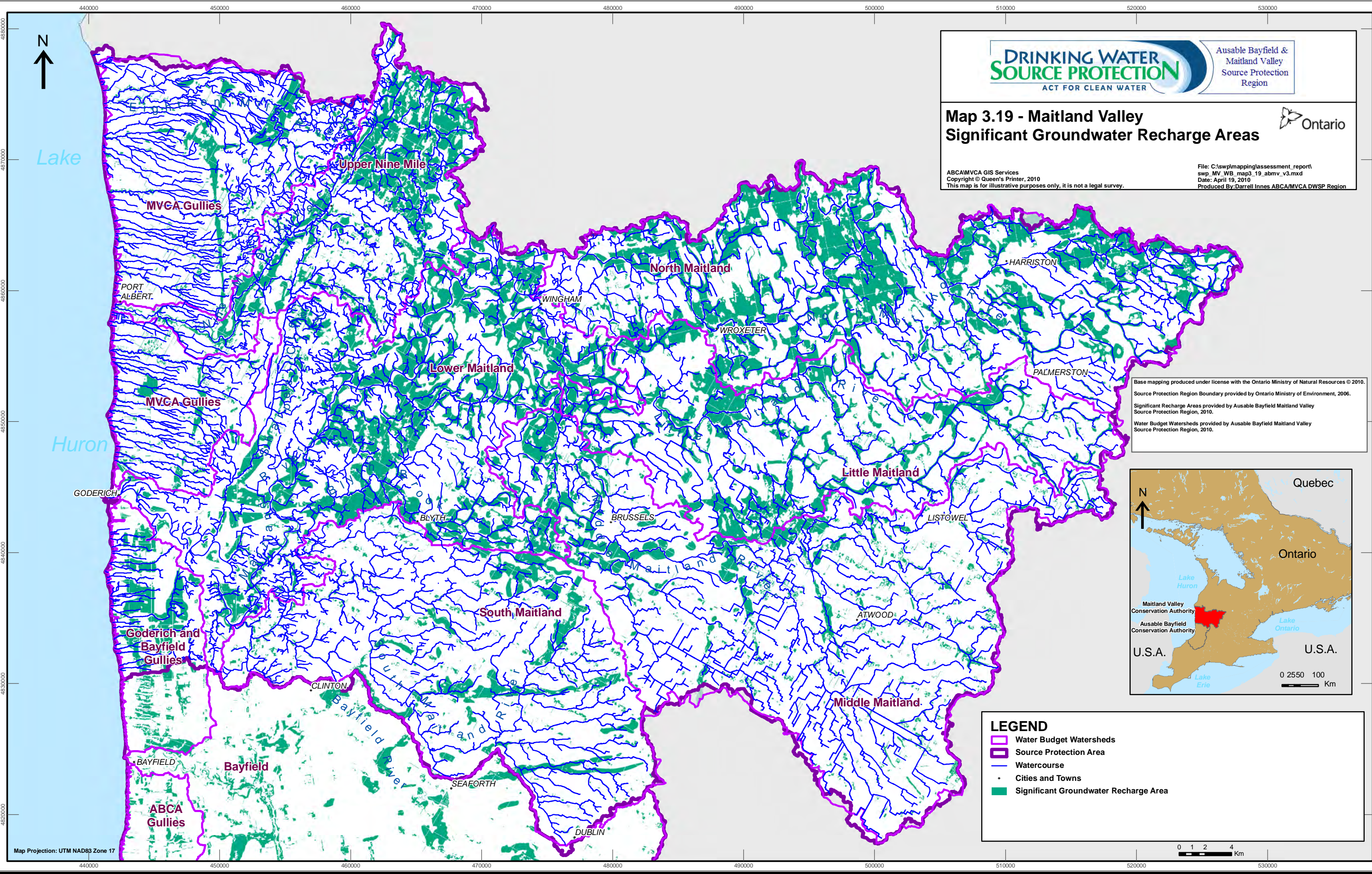
Ausable Bayfield & Maitland Valley Source Protection Region

Map 3.19 - Maitland Valley Significant Groundwater Recharge Areas



ABCAMVCA GIS Services
Copyright © Queen's Printer, 2010
This map is for illustrative purposes only, it is not a legal survey.






File: C:\swplmapping\assessment_report\ swp_MV_WB_map3_19_abmv_v3.mxd
Date: April 19, 2010
Produced By: Darrell Innes ABCAMVCA DWSP Region



Base mapping produced under license with the Ontario Ministry of Natural Resources © 2010.
Source Protection Region Boundary provided by Ontario Ministry of Environment, 2006.
Significant Recharge Areas provided by Ausable Bayfield Maitland Valley Source Protection Region, 2010.
Water Budget Watersheds provided by Ausable Bayfield Maitland Valley Source Protection Region, 2010.



LEGEND

-  Water Budget Watersheds
-  Source Protection Area
-  Watercourse
-  Cities and Towns
-  Significant Groundwater Recharge Area

Map Projection: UTM NAD83 Zone 17

