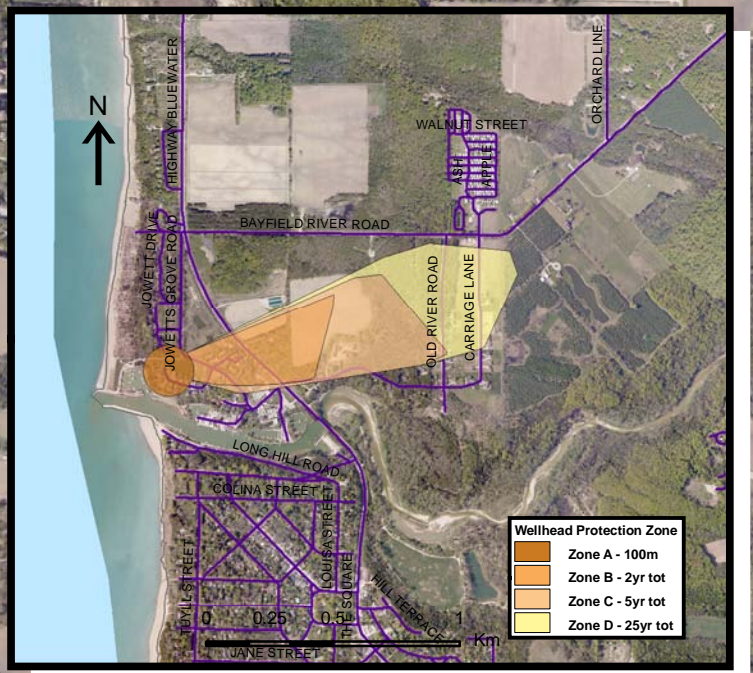
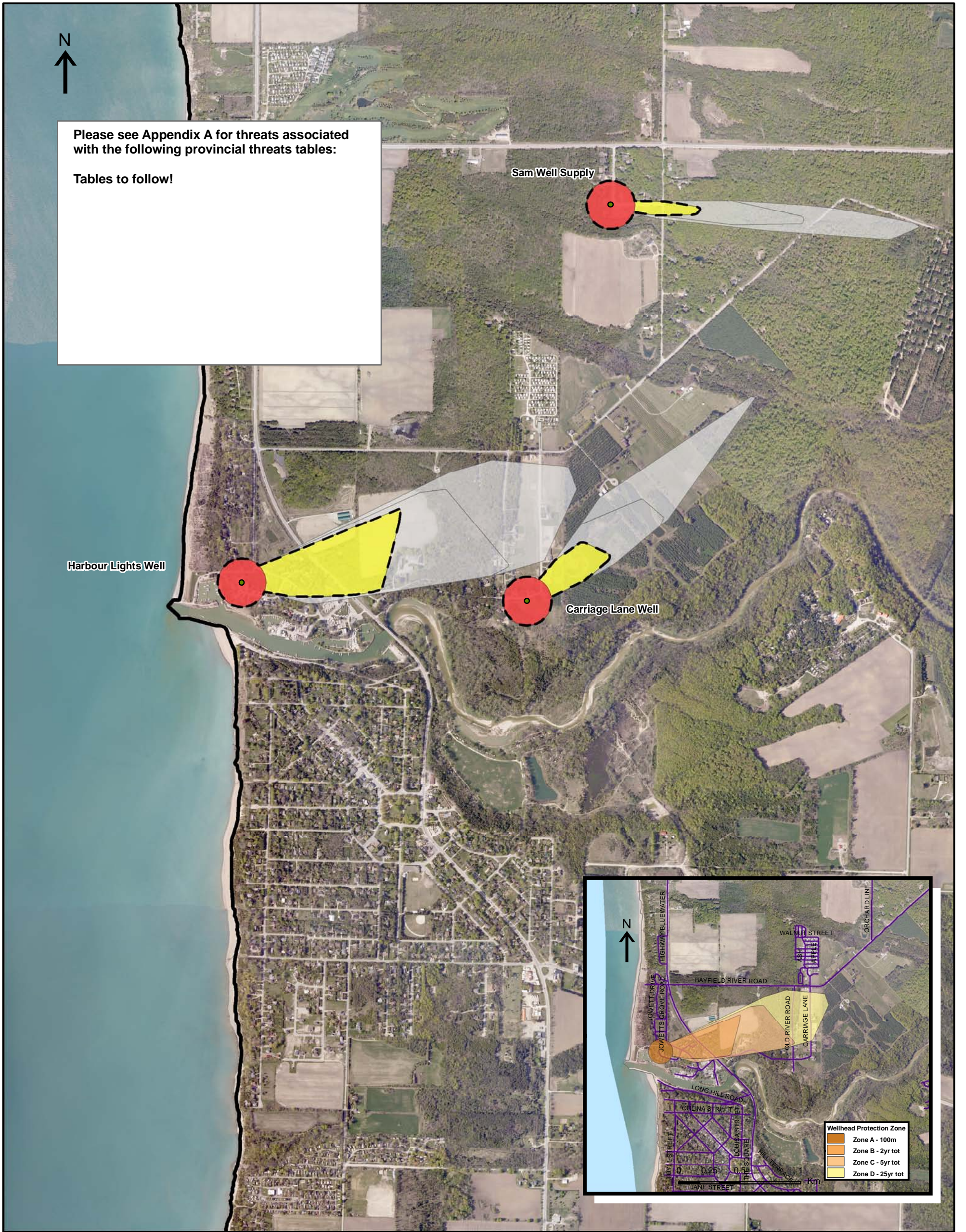




Please see Appendix A for threats associated with the following provincial threats tables:

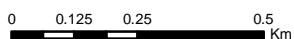
Tables to follow!



Map 4.33 Areas Where Pathogen Threats Can Be Significant, Moderate or Low Harbour Lights System

**LEGEND**

- Conservation Authority
- Entire WHPA Capture Zone
- Municipal Well
- WHPA Threat Area**
- GWVA in Tot Zones - 100m, 2yr
  - 10
  - 8
  - 6
- 2 Year Tot Zone
- Century Heights GUDI Threat Area
- GWVA
  - 7.2
- IPZ Threat Area**
- GWVA
  - 6
  - 5.4
  - 5



Photos from First Base Solutions



Ausable Bayfield & Maitland Valley Source Protection Region

**Map 4.33 Areas Where Pathogen Threats Can Be Significant, Moderate or Low Harbour Lights System**



ABCAMVCA GIS Services  
Copyright (c) Queen's Printer, 2009  
This map is for illustrative purposes only, it is not a legal survey.

C:\swp\small\_projects\bmross\whpa\_database\_threats\whpa\_path\_harbour\_lights\_v9.mxd  
Date: November 10, 2009  
Produced By: Darrell Innes ABCA/MVCA DWSP Region